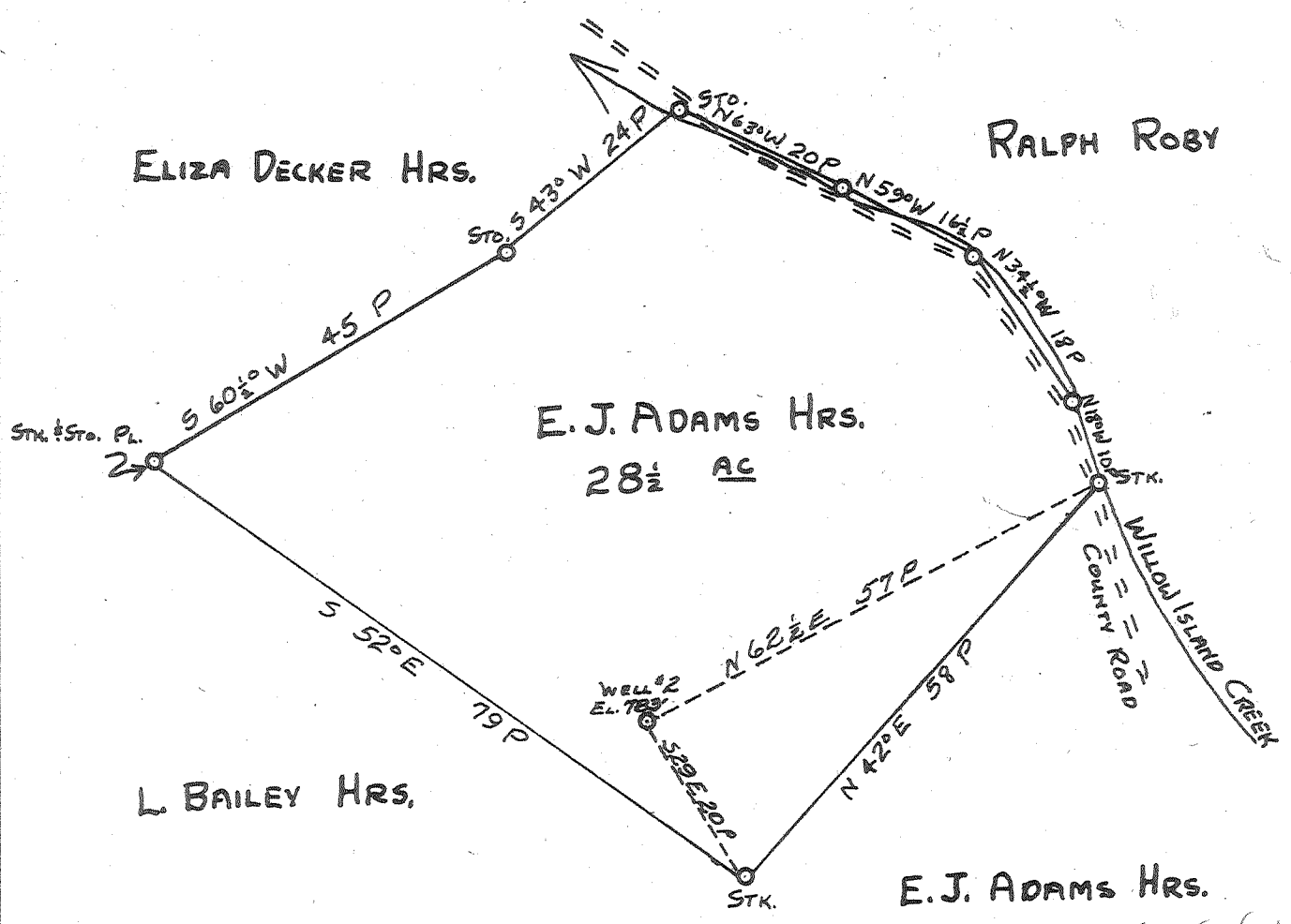
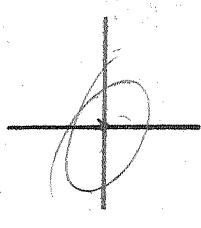
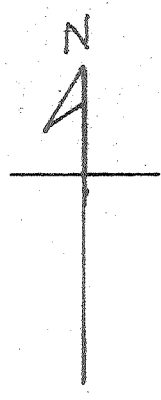


0 1 2 3

1

2

3



ABANDONMENT

MAY 17 1960

Handwritten signatures and initials.

Company	HART & HAMILTON
Address	ST. MARYS, W. VA.
Farm	E. J. ADAMS HRS.
Tract	Acres 28 1/2 Lease No. 123
Well (Farm) No.	2 Serial No. 97
Elevation (Spirit Level)	783
Quadrangle	ST. MARYS
County	PLEASANTS District M & KIM
Engineer	JOHN W. HAMILTON
Engineer's Registration No.	2274
File No.	Drawing No.
Date	MAY 1, 1960 Scale 1" = 20 P

STATE OF WEST VIRGINIA
DEPARTMENT OF MINES
OIL AND GAS DIVISION
CHARLESTON

WELL LOCATION MAP
FILE NO. PLEAS-792-A

† Denotes location of well on United States Topographic Maps, scale 1 to 62,500, latitude and longitude lines being represented by border lines as shown.

- Denotes one inch spaces on border line of original tracing.