

0 1 2 3

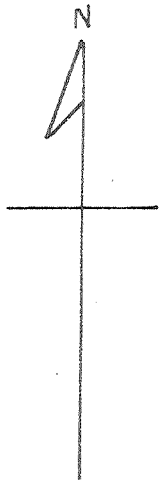
Latitude 39° 25'

1

Longitude 81° 10'

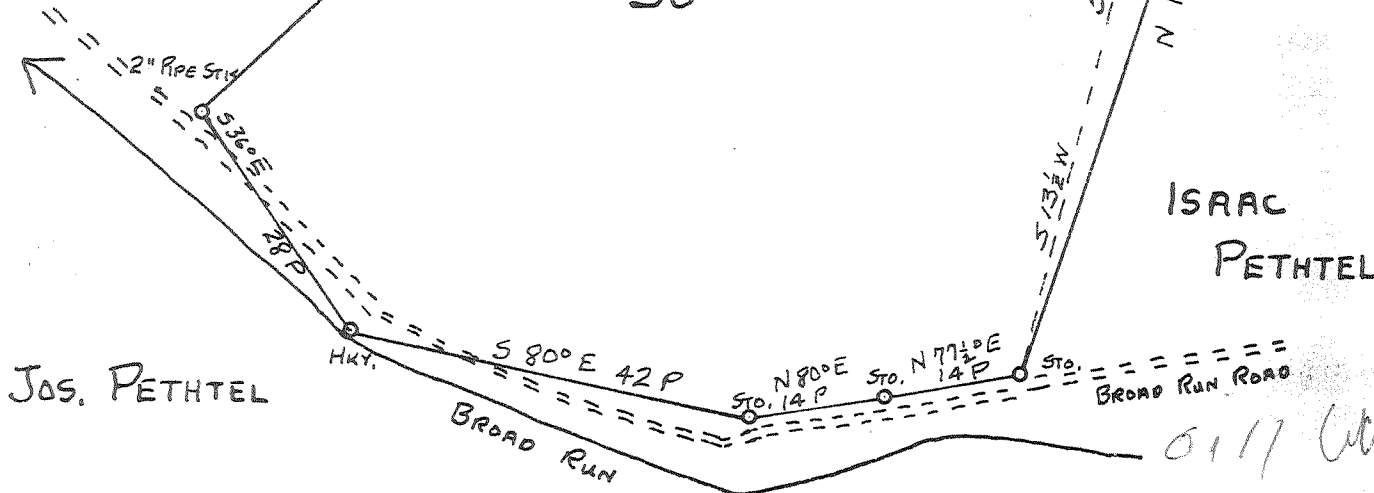
2

3



ISAAC
PETHTEL

EMALINE ROBINSON
50 AC



JOS. PETHTEL

ISAAC
PETHTEL

ABANDONMENT

MAY 23 1960

0117 CW
2177

Company	HART & HAMILTON
Address	ST. MARYS, W. VA.
Farm	EMALINE ROBINSON
Tract	Acres 50 Lease No. 48
Well (Farm) No.	5 Serial No. 102
Elevation (Spirit Level)	702'
Quadrangle	ST. MARYS
County	PLEASANTS District WASHINGTON
Engineer	JOHN W. HAMILTON
Engineer's Registration No.	2274
File No.	Drawing No.
Date	MAY 1, 1960 Scale 1" = 20 P

STATE OF WEST VIRGINIA
DEPARTMENT OF MINES
OIL AND GAS DIVISION
CHARLESTON

WELL LOCATION MAP
FILE NO. PLEAS-799-A

+ Denotes location of well on United States Topographic Maps, scale 1 to 62,500, latitude and longitude lines being represented by border lines as shown.

- Denotes one inch spaces on border line of original tracing.

EMALINE ROBINSON 50 AC (102) - HART & HAMILTON - PLEAS-799-A