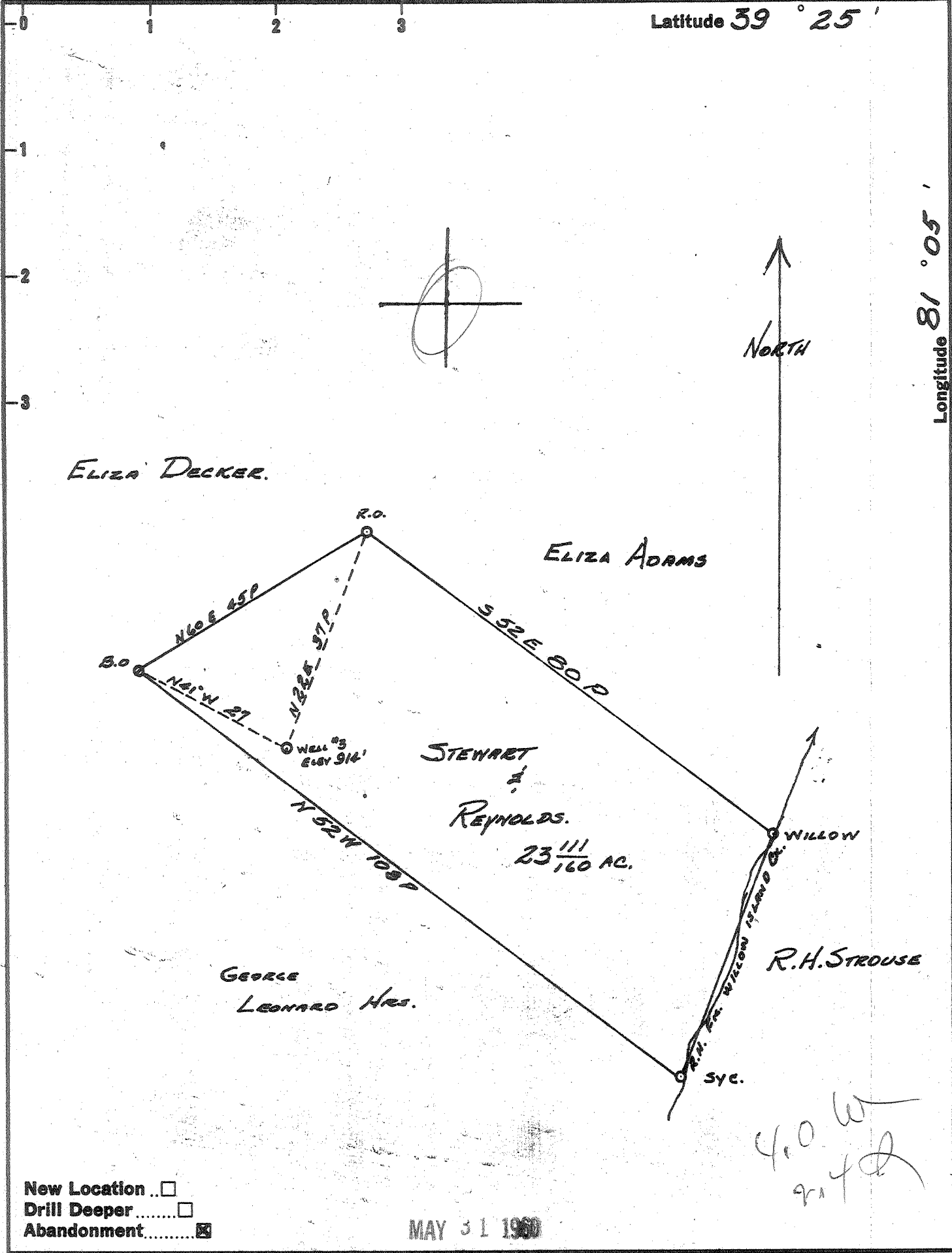


Latitude 39° 25'

Longitude 81° 05'



New Location
 Drill Deeper
 Abandonment

MAY 31 1960

400 W
 914

Company HART & HAMILTON
 Address ST MARYS, W. VA.
 Farm STEWART & REYNOLDS
 Tract _____ Acres 25 11/160 Lease No. _____
 Well (Farm) No. 3 Serial No. 84
 Elevation (Spirit Level) 914 FT.
 Quadrangle ST. MARYS.
 County PLEASANTS District McKIN
 Engineer JOHN W. HAMILTON
 Engineer's Registration No. 2274
 File No. _____ Drawing No. _____
 Date MAY 1, 1960 Scale 1" = 20 P

STATE OF WEST VIRGINIA
 DEPARTMENT OF MINES
 OIL AND GAS DIVISION
 CHARLESTON

WELL LOCATION MAP
 FILE NO. PLEAS-805-A

+ Denotes location of well on United States Topographic Maps, scale 1 to 62,500, latitude and longitude lines being represented by border lines as shown.

- Denotes one inch spaces on border line of original tracing.