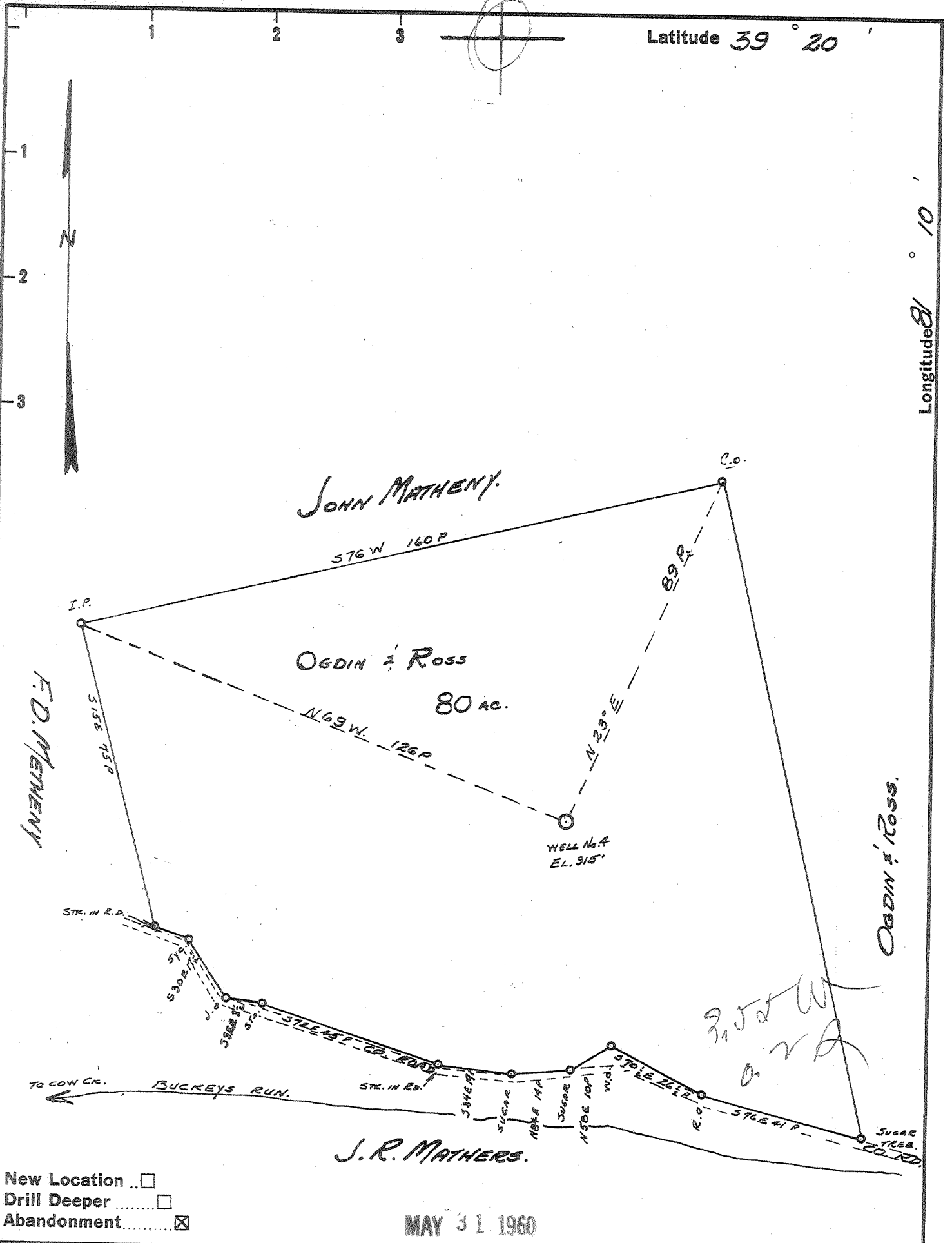


Latitude 39° 20'

Longitude 81° 10'



New Location
 Drill Deeper
 Abandonment

MAY 31 1960

Company HART & HAMILTON
 Address ST. MARYS, W. VA.
 Farm OGDIN & ROSS.
 Tract 2 Acres 80 Lease No. 69
 Well (Farm) No. 4 Serial No. 159
 Elevation (Spirit Level) 915'
 Quadrangle ST MARYS.
 County PLEASANTS District JEFFERSON
 Engineer JOHN W. HAMILTON
 Engineer's Registration No. 2274
 File No. _____ Drawing No. _____
 Date MAY 11, 1960 Scale 1" = 30 P

STATE OF WEST VIRGINIA
 DEPARTMENT OF MINES
 OIL AND GAS DIVISION
 CHARLESTON

WELL LOCATION MAP
 FILE NO. PLEAS-810-A

+ Denotes location of well on United States Topographic Maps, scale 1 to 62,500, latitude and longitude lines being represented by border lines as shown.

- Denotes one inch spaces on border line of original tracing.