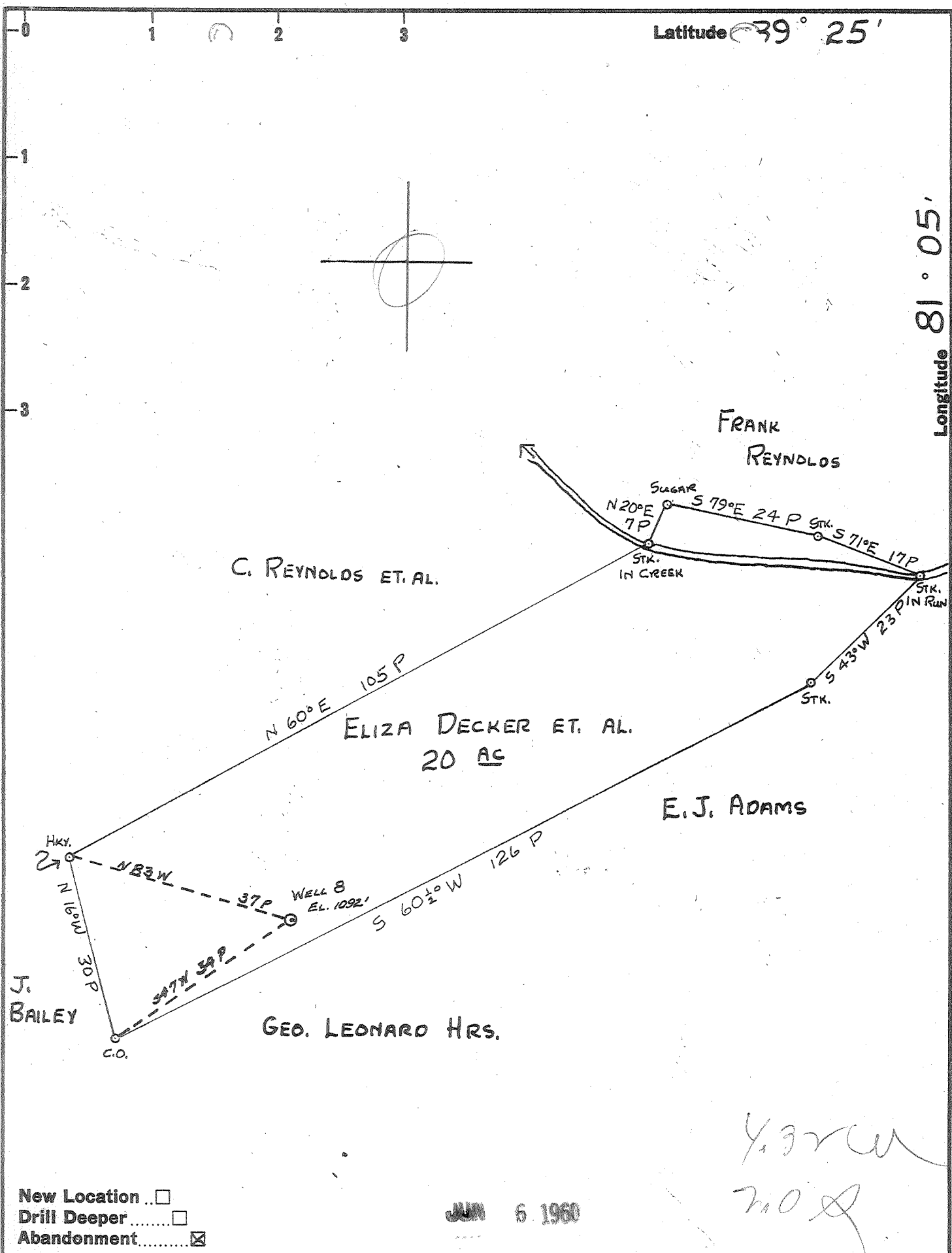


Latitude 39° 25'

Longitude 81° 05'



New Location
 Drill Deeper
 Abandonment

JUN 6 1960

Company	HART & HAMILTON
Address	ST. MARYS, W.VA.
Farm	ELIZA DECKER ET. AL.
Tract	Acres 20 Lease No. 131
Well (Farm) No.	8 Serial No. 88
Elevation (Spirit Level)	1092'
Quadrangle	ST. MARYS
County	PLEASANTS District MCKIM
Engineer	JOHN W. HAMILTON
Engineer's Registration No.	2274
File No.	Drawing No.
Date	MAY 1, 1960 Scale 1" = 20 P

STATE OF WEST VIRGINIA
 DEPARTMENT OF MINES
 OIL AND GAS DIVISION
 CHARLESTON

WELL LOCATION MAP
 FILE NO. PLEAS-816-A

+ Denotes location of well on United States Topographic Maps, scale 1 to 62,500, latitude and longitude lines being represented by border lines as shown.
 - Denotes one inch spaces on border line of original tracing.