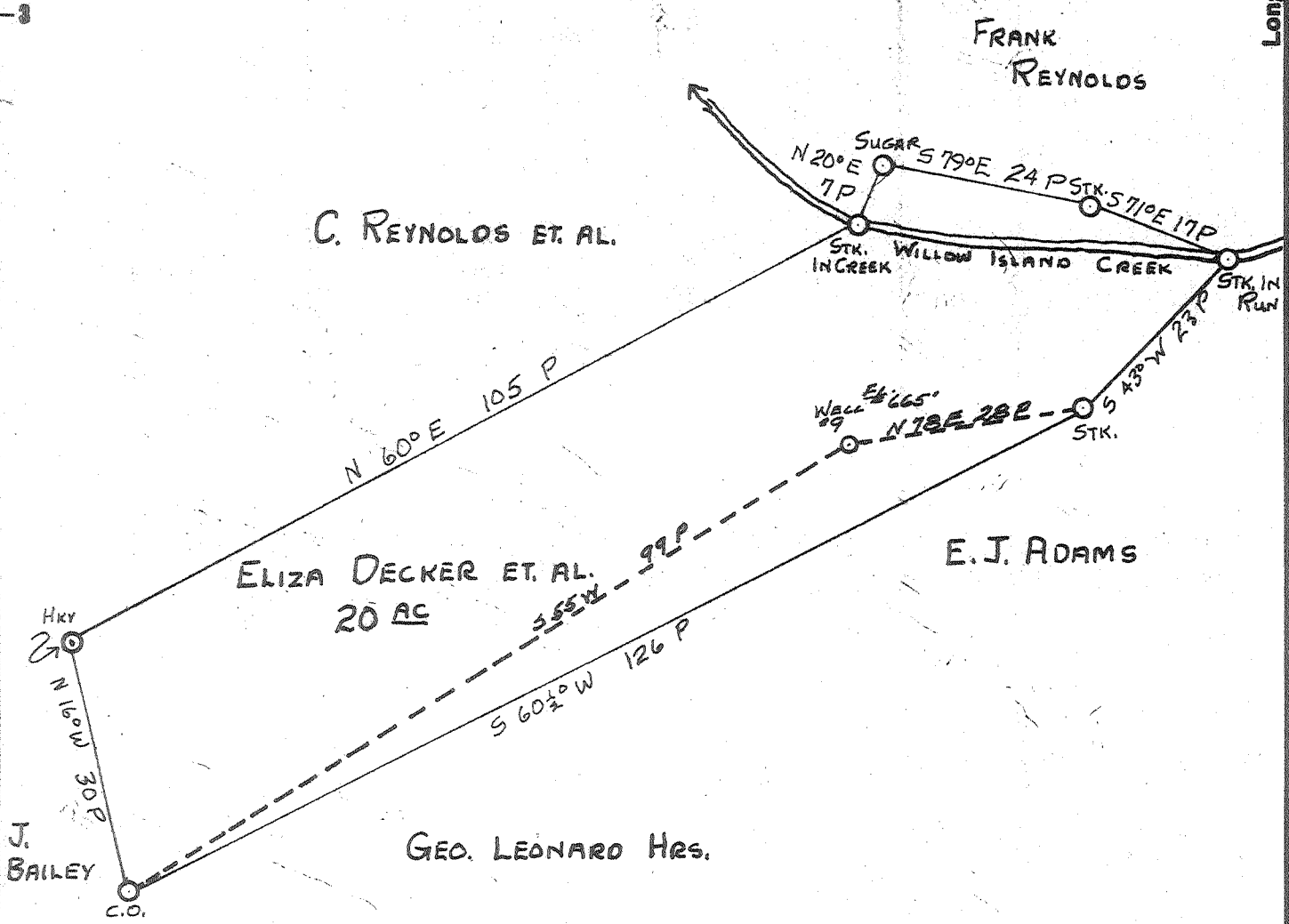
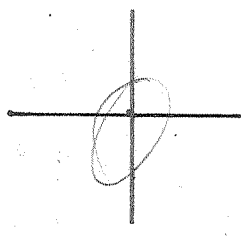


Latitude 29° 25'

Longitude 81° 05'



- New Location
- Drill Deeper
- Abandonment

JUN 6 1960

4.30
1197

Company HART & HAMILTON
 Address ST. MARYS, W. VA.
 Farm ELIZA DECKER ET. AL.
 Tract _____ Acres 20 Lease No. 131
 Well (Farm) No. 9 Serial No. 87
 Elevation (Spirit Level) 665'
 Quadrangle ST. MARYS
 County PLEASANTS District MEKIM
 Engineer JOHN W. HAMILTON
 Engineer's Registration No. 2274
 File No. _____ Drawing No. _____
 Date MAY 1, 1960 Scale 1" = 20 P

STATE OF WEST VIRGINIA
DEPARTMENT OF MINES
OIL AND GAS DIVISION
CHARLESTON

WELL LOCATION MAP
FILE NO. PLEAS-817-A

+ Denotes location of well on United States Topographic Maps, scale 1 to 62,500, latitude and longitude lines being represented by border lines as shown.

- Denotes one inch spaces on border line of original tracing.

ELIZA DECKER ET AL, No. 9(87) - HART & HAMILTON - PLEAS-817-A