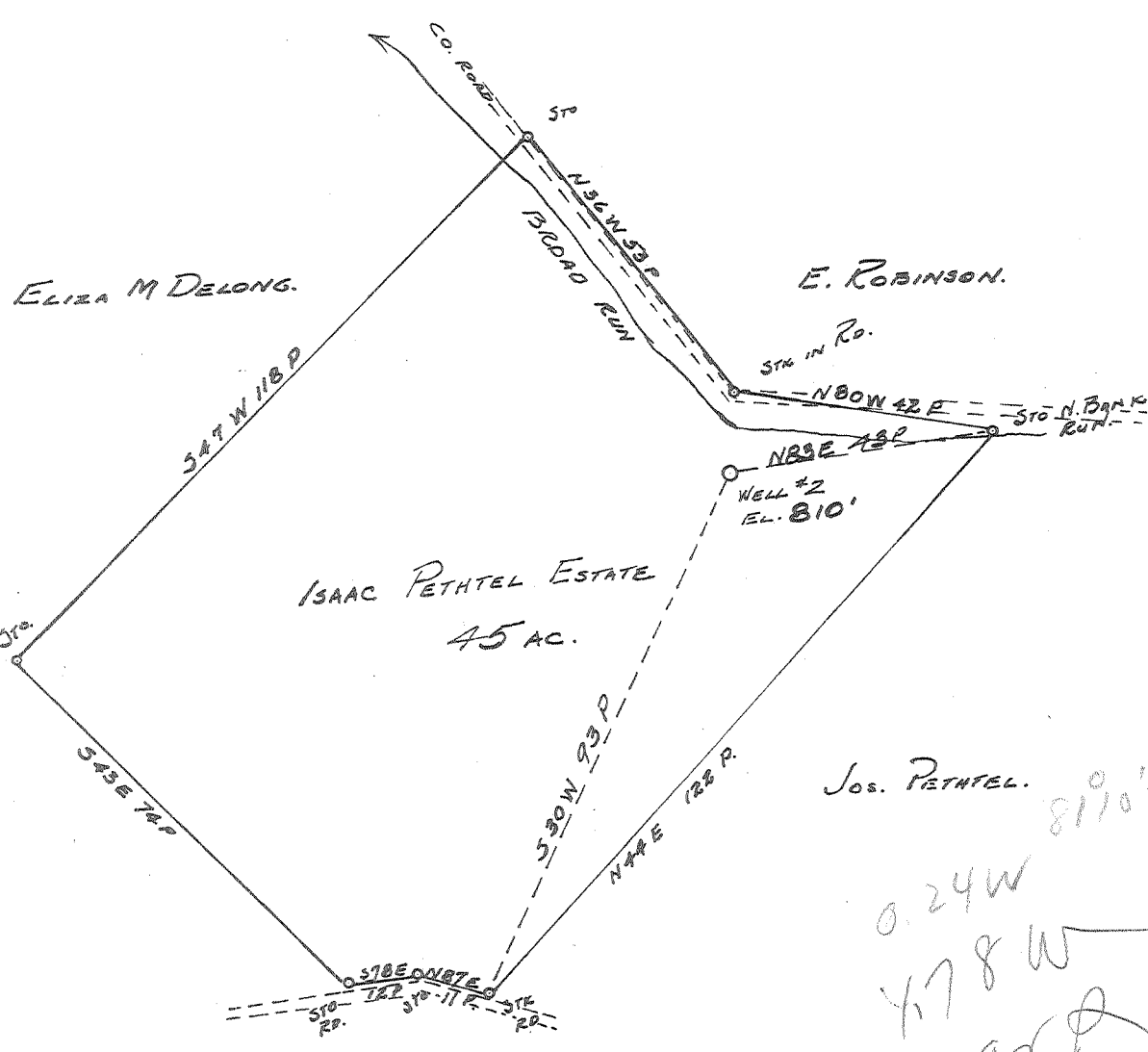
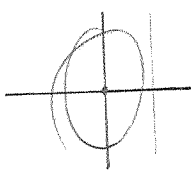


Latitude 39° 25'

Longitude 81° 05'

1 2 3



ZADOCK PETHTEL JUN 27 1960

Handwritten notes: 0.24W, 478W, m 92 P, 8110'

New Location
Drill Deeper
Abandonment

Company HART & HAMILTON
 Address ST. MARYS, W. VA.
 Farm ISAAC. PETHTEL ESTATE.
 Tract _____ Acres 45 Lease No. 47
 Well (Farm) No. 2 Serial No. 122
 Elevation (Spirit Level) 810'
 Quadrangle ST. MARYS.
 County PLEASANTS District WASHINGTON
 Engineer JOHN W. HAMILTON
 Engineer's Registration No. 2274
 File No. _____ Drawing No. _____
 Date MAY 10, 1960 Scale 1" = 30 P.

STATE OF WEST VIRGINIA
DEPARTMENT OF MINES
OIL AND GAS DIVISION
CHARLESTON

WELL LOCATION MAP
FILE NO. PLEAS-826-A

+ Denotes location of well on United States Topographic Maps, scale 1 to 62,500, latitude and longitude lines being represented by border lines as shown.

- Denotes one inch spaces on border line of original tracing.

ISAAC PETHTEL ESTATE No. 2 (WV) - HART & HAMILTON - PLEAS-826-A