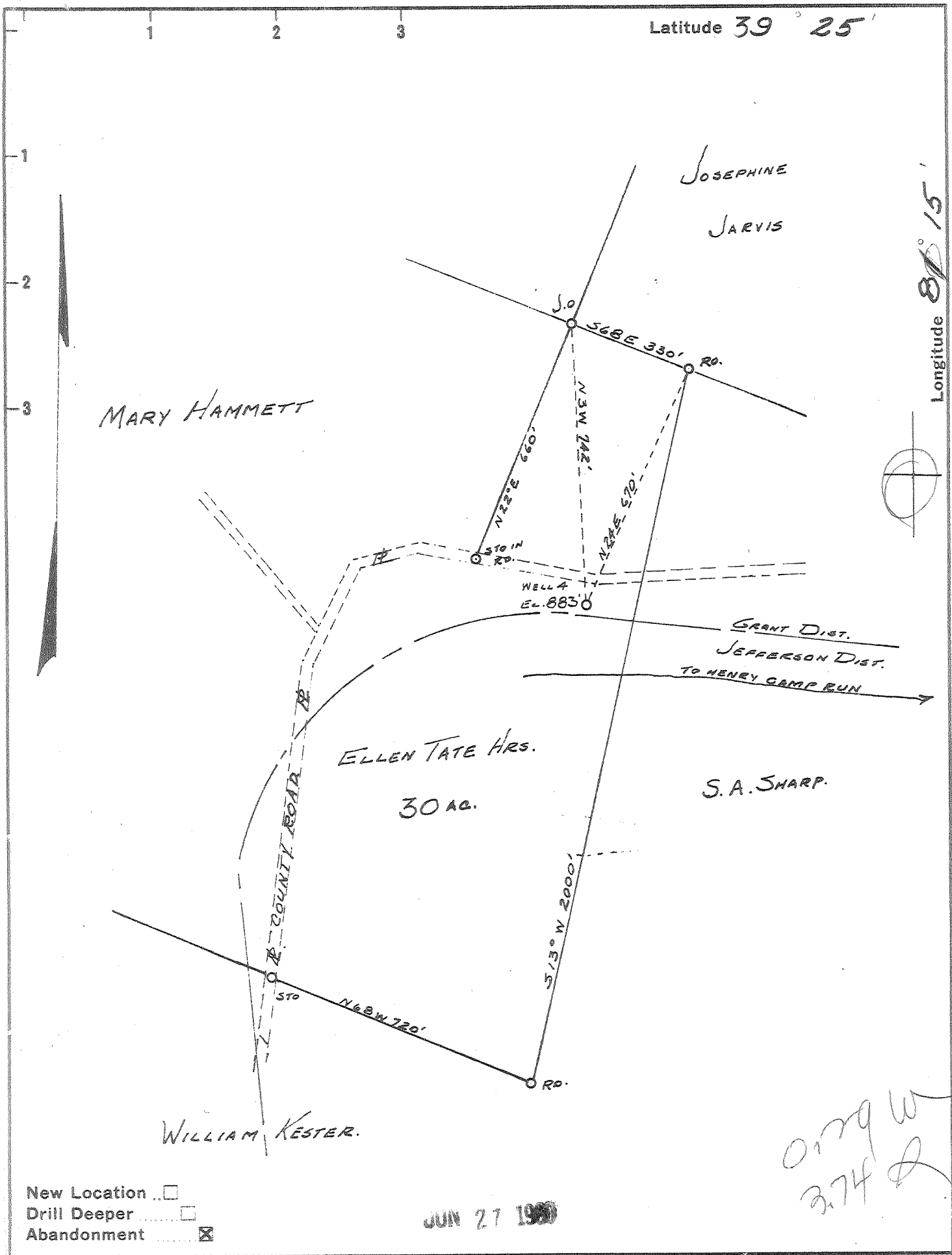


Latitude 39° 25'

Longitude 81° 15'



New Location
 Drill Deeper
 Abandonment

JUN 27 1960

0179 W
374

Company JOHN R. DAUGHTERY
 Address ST. MARYS, W.VA.
 Farm ELLEN TATE HRS.
 Tract _____ Acres 30 Lease No. _____
 Well (Farm) No. 4 Serial No. _____
 Elevation (Spirit Level) 883 FT.
 Quadrangle MARIETTA.
 County PLEASANTS District JEFFERSON-GRANT
 Engineer JOHN W. HAMILTON
 Engineer's Registration No. 2274
 File No. _____ Drawing No. _____
 Date JUNE 10, 1960 Scale 1" = 330 FT.

STATE OF WEST VIRGINIA
 DEPARTMENT OF MINES
 OIL AND GAS DIVISION
 CHARLESTON

WELL LOCATION MAP
 FILE NO. PLEAS-831-A

+ Denotes location of well on United States Topographic Maps, scale 1 to 62,500, latitude and longitude lines being represented by border lines as shown.
 - Denotes one inch spaces on border line of original tracing.

ELLEN TATE HEIRS No. A - JOHN R. DAUGHTERY - PLEAS-831-A