

0 1 2 3

Latitude 39° 25'

1

Longitude 81° 05'

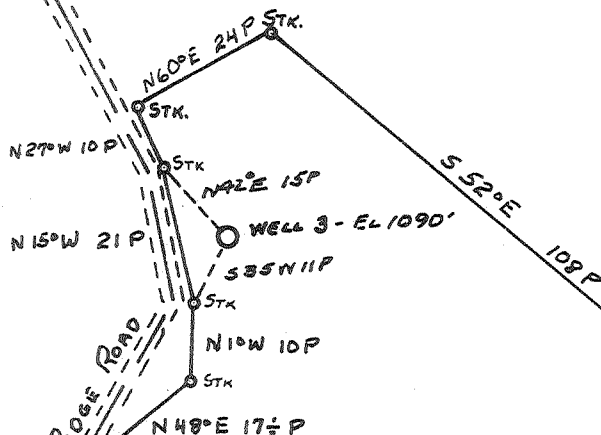
2

3

E. BOLEY

STEWART  
REYNOLDS

DISTRICT  
LINE



GEO. LEONARD HEIRS.

84 <sup>102</sup>/<sub>160</sub> AC.

To MILLERS  
ISLAND CREEK

IRON STK.  
IN RUN

WASHINGTON DIST.  
MCKIM DIST.

R. ROBINSON

B. WILSON

WELVIN 27 1960

42 W  
m 41

ABANDONMENT

Company	HART & HAMILTON
Address	ST. MARKS, W.VA.
Farm	GEO. LEONARD HEIRS.
Tract	Acres <sup>84</sup> / <sub>102</sub> Lease No. 122
Well (Farm) No.	3 Serial No. 111
Elevation (Spirit Level)	1090
Quadrangle	ST. MARKS
County	PLEASANTS District MCKIM
Engineer	JOHN W. HAMILTON
Engineer's Registration No.	2274
File No.	Drawing No.
Date	MAY 20, 1960 Scale 1"=30P

STATE OF WEST VIRGINIA  
DEPARTMENT OF MINES  
OIL AND GAS DIVISION  
CHARLESTON

WELL LOCATION MAP

FILE NO. PLEAS-836-A

† Denotes location of well on United States Topographic Maps, scale 1 to 62,500, latitude and longitude lines being represented by border lines as shown.

- Denotes one inch spaces on border line of original tracing.

GEO. LEONARD HEIRS NO. 3 (111) - HART & HAMILTON - PLEAS-836-A