

0 1 2 3

Latitude 39° 25'

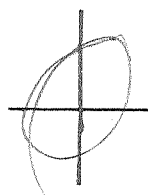
1

STEWART &
REYNOLDS

Longitude 81° 05'

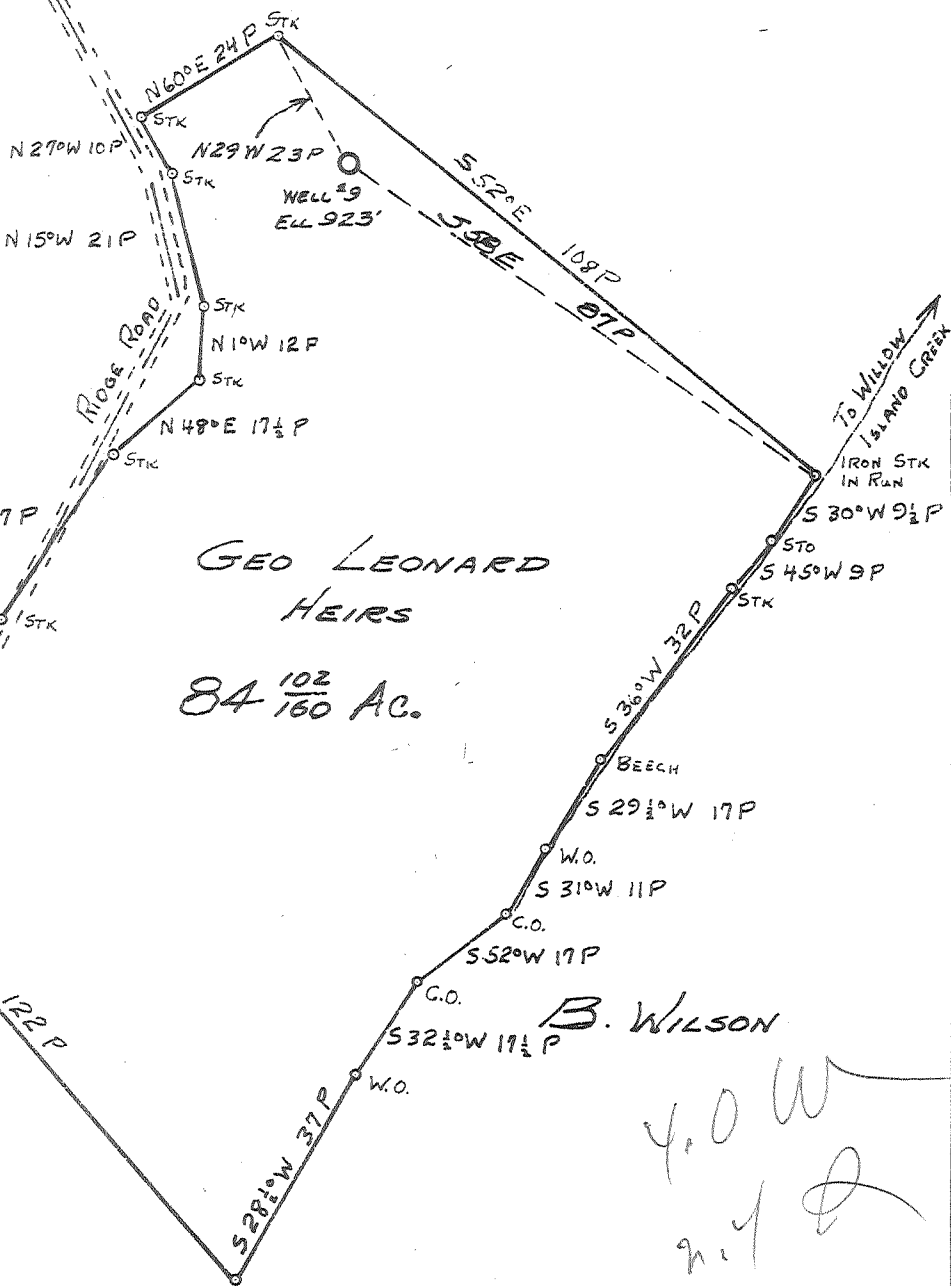
E. BOLEY.

DISTRICT
LINE



2

3



R. ROBINSON

ABANDONMENT

JUL 3 1960

Company HART & HAMILTON
 Address ST. MARYS, W.VA
 Farm GEO. LEONARD HRS.
 Tract _____ Acres 84 102/160 Lease No. 122
 Well (Farm) No. 9 Serial No. 112
 Elevation (Spirit Level) 923'
 Quadrangle ST. MARYS
 County PLEASANTS District McKIM
 Engineer JOHN W. HAMILTON
 Engineer's Registration No. 2274
 File No. _____ Drawing No. _____
 Date MAY 20, 1960 Scale 1" = 30P

STATE OF WEST VIRGINIA
DEPARTMENT OF MINES
OIL AND GAS DIVISION
CHARLESTON

WELL LOCATION MAP
FILE NO. PLEAS-841-A

+ Denotes location of well on United States Topographic Maps, scale 1 to 62,500, latitude and longitude lines being represented by border lines as shown.

- Denotes one inch spaces on border line of original tracing.

PRINTED ON

GEO. LEONARD HRS. W.B. 9 (112) - HART & HAMILTON - PLEAS-841-A