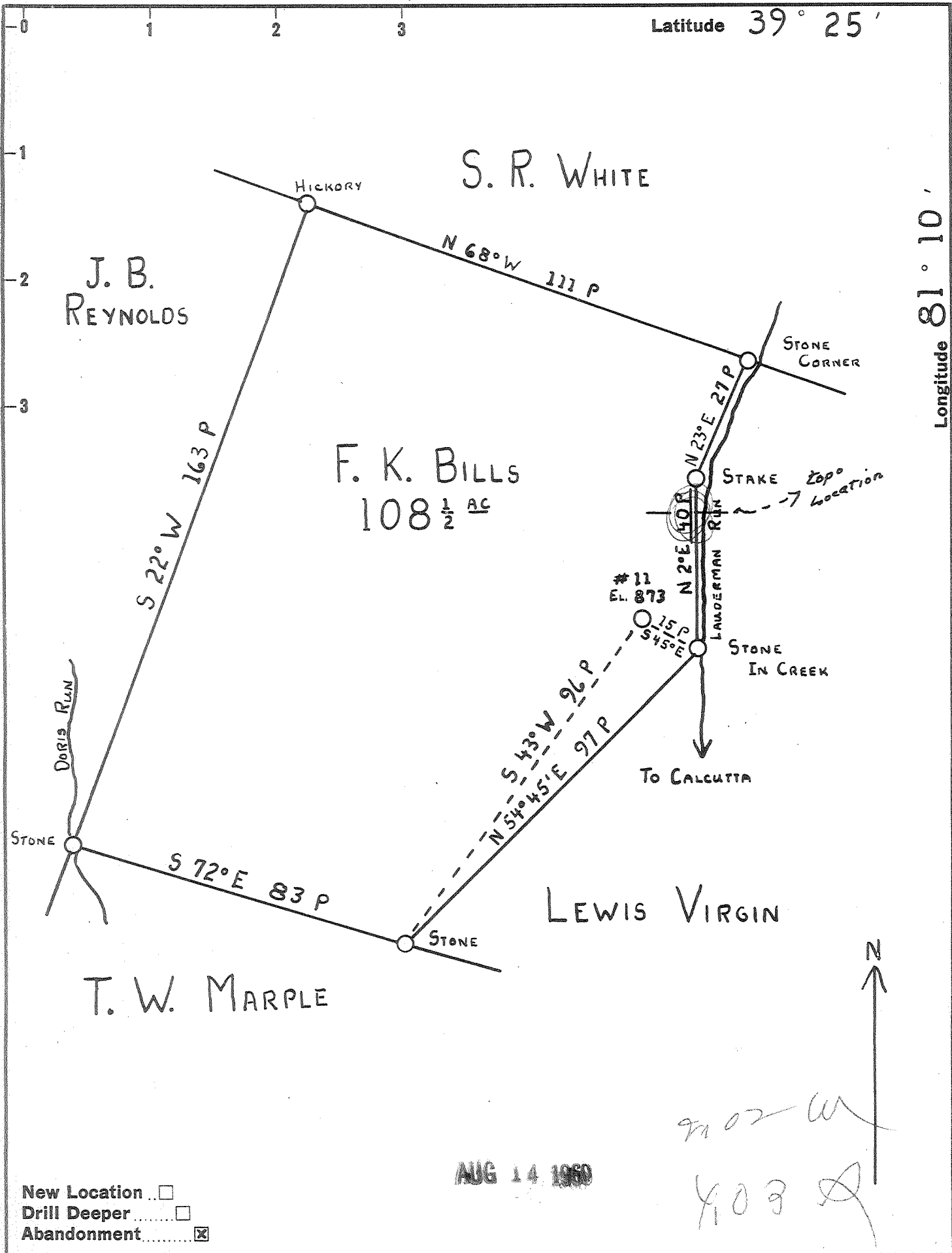


Latitude 39° 25'

Longitude 81° 10'



New Location
 Drill Deeper
 Abandonment

AUG 14 1960

Company HART & HAMILTON
 Address Box 26, ST. MARYS, W. VA.
 Farm F. K. BILLS
 Tract _____ Acres 108 1/2 Lease No. _____
 Well (Farm) No. 11 Serial No. 19
 Elevation (Spirit Level) 873'
 Quadrangle ST. MARYS
 County PLEASANTS District WASHINGTON
 Engineer JOHN W. HAMILTON
 Engineer's Registration No. 2274
 File No. _____ Drawing No. _____
 Date 11-21-59 Scale 1" = 30 P

STATE OF WEST VIRGINIA
 DEPARTMENT OF MINES
 OIL AND GAS DIVISION
 CHARLESTON

WELL LOCATION MAP

FILE NO. Pleas-846-A

+ Denotes location of well on United States Topographic Maps, scale 1 to 62,500, latitude and longitude lines being represented by border lines as shown.

- Denotes one inch spaces on border line of original tracing.

F.K. BILLS 108.11(19) -

HART & HAMILTON -

PLEAS-846-A