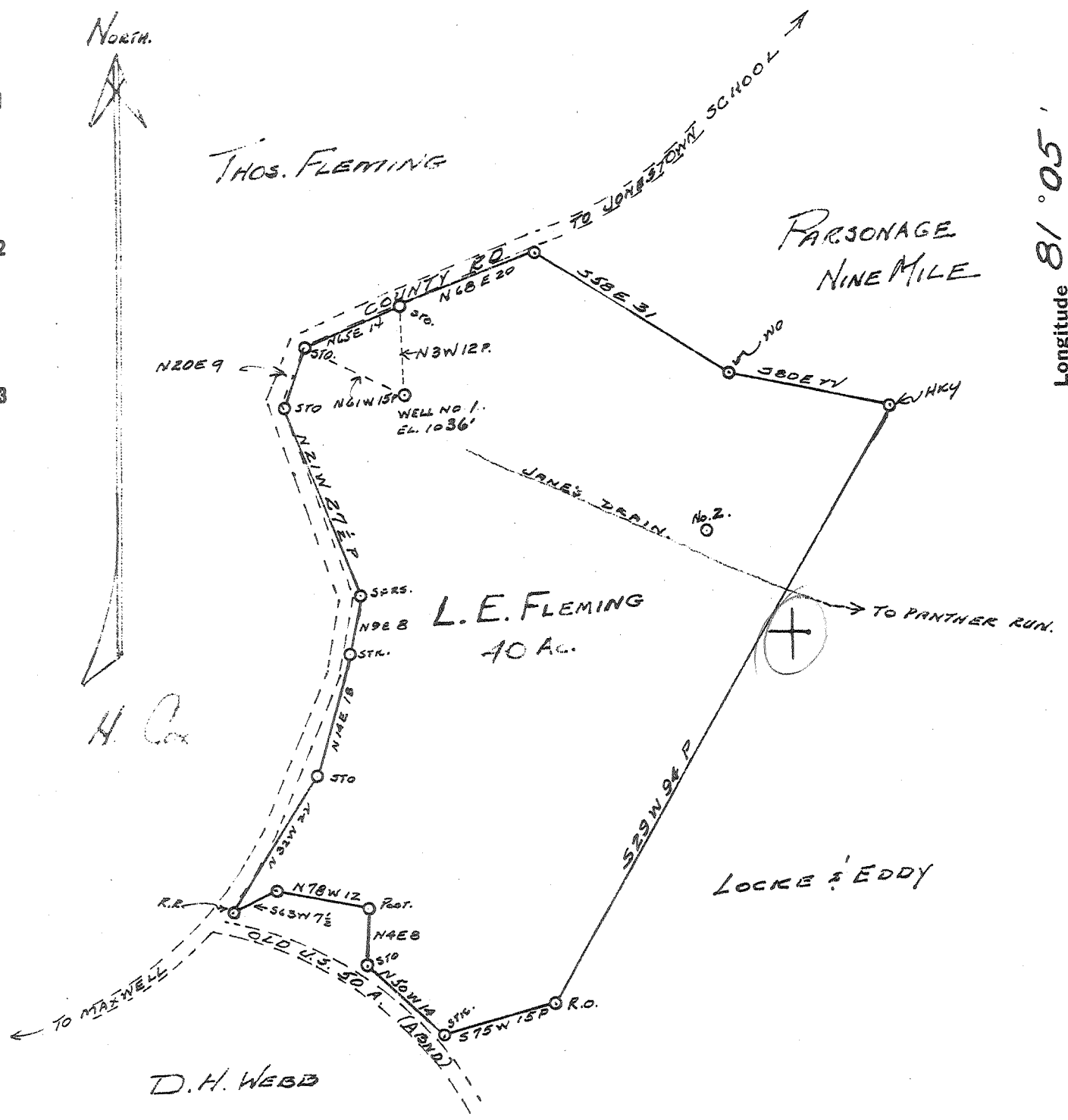


Latitude 39° 25'

Longitude 81° 05'



- New Location
- Drill Deeper
- Abandonment

SEP 19 1960

1.93 W
4.85 A

Company HART & HAMILTON.

Address ST. MARYS, W. VA.

Farm L. E. FLEMING.

Tract _____ Acres 40 Lease No. 147

Well (Farm) No. 1 Serial No. _____

Elevation (Spirit Level) 1036'

Quadrangle ST. MARYS

County PLEASANTS District McKIM

Engineer JOHN W. HAMILTON

Engineer's Registration No. 2274

File No. _____ Drawing No. 197

Date AUGUST 10, 1960 Scale 1" = 20 P

STATE OF WEST VIRGINIA
DEPARTMENT OF MINES
OIL AND GAS DIVISION
CHARLESTON

WELL LOCATION MAP
FILE NO. PLEAS-873-A

- + Denotes location of well on United States Topographic Maps, scale 1 to 62,500, latitude and longitude lines being represented by border lines as shown.
- Denotes one inch spaces on border line of original tracing.

L. E. FLEMING No. 1 - HART & HAMILTON - PLEAS-873-A