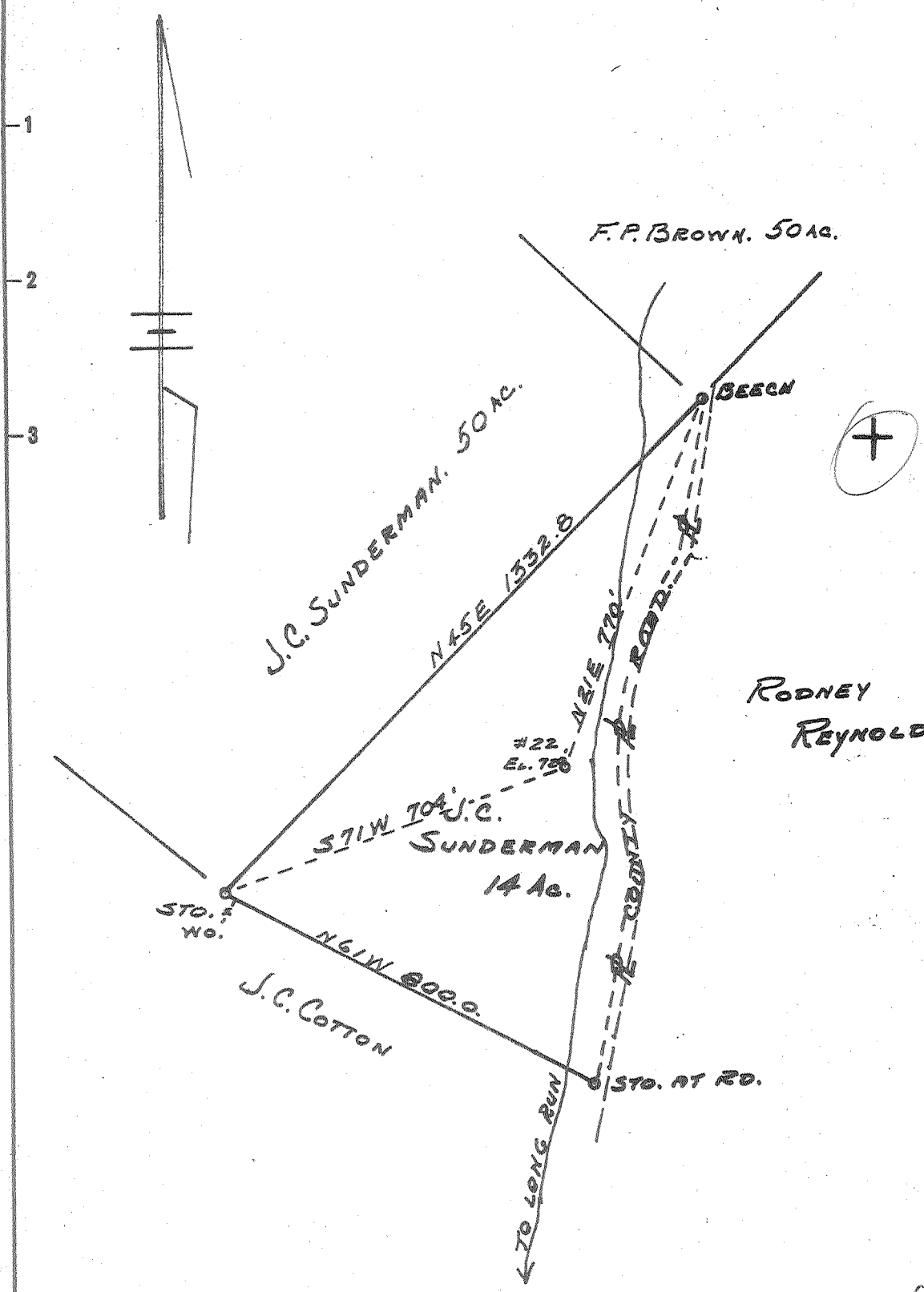


Latitude 39° 25'

Longitude 81° 10'



New Location   
 Drill Deeper   
 Abandonment

SEP 12 1960

1.9 W  
 3.25 A

Company HART & HAMILTON  
 Address ST. MARYS, W.VA.  
 Farm J.C. SUNDERMAN  
 Tract \_\_\_\_\_ Acres 14 Lease No. 13  
 Well (Farm) No. 22 Serial No. \_\_\_\_\_  
 Elevation (Spirit Level) 720'  
 Quadrangle ST. MARYS.  
 County PLEASANTS District WASHINGTON  
 Engineer JOHN W. HAMILTON  
 Engineer's Registration No. 2274  
 File No. \_\_\_\_\_ Drawing No. 225  
 Date AUG. 30, 1960 Scale 1" = 300'

STATE OF WEST VIRGINIA  
 DEPARTMENT OF MINES  
 OIL AND GAS DIVISION  
 CHARLESTON

WELL LOCATION MAP  
 FILE NO. PLEAS-878-A

+ Denotes location of well on United States Topographic Maps, scale 1 to 62,500, latitude and longitude lines being represented by border lines as shown.

- Denotes one inch spaces on border line of original tracing.

J. C. SUNDERMAN No. 22 - HART & HAMILTON - PLEAS-878-A