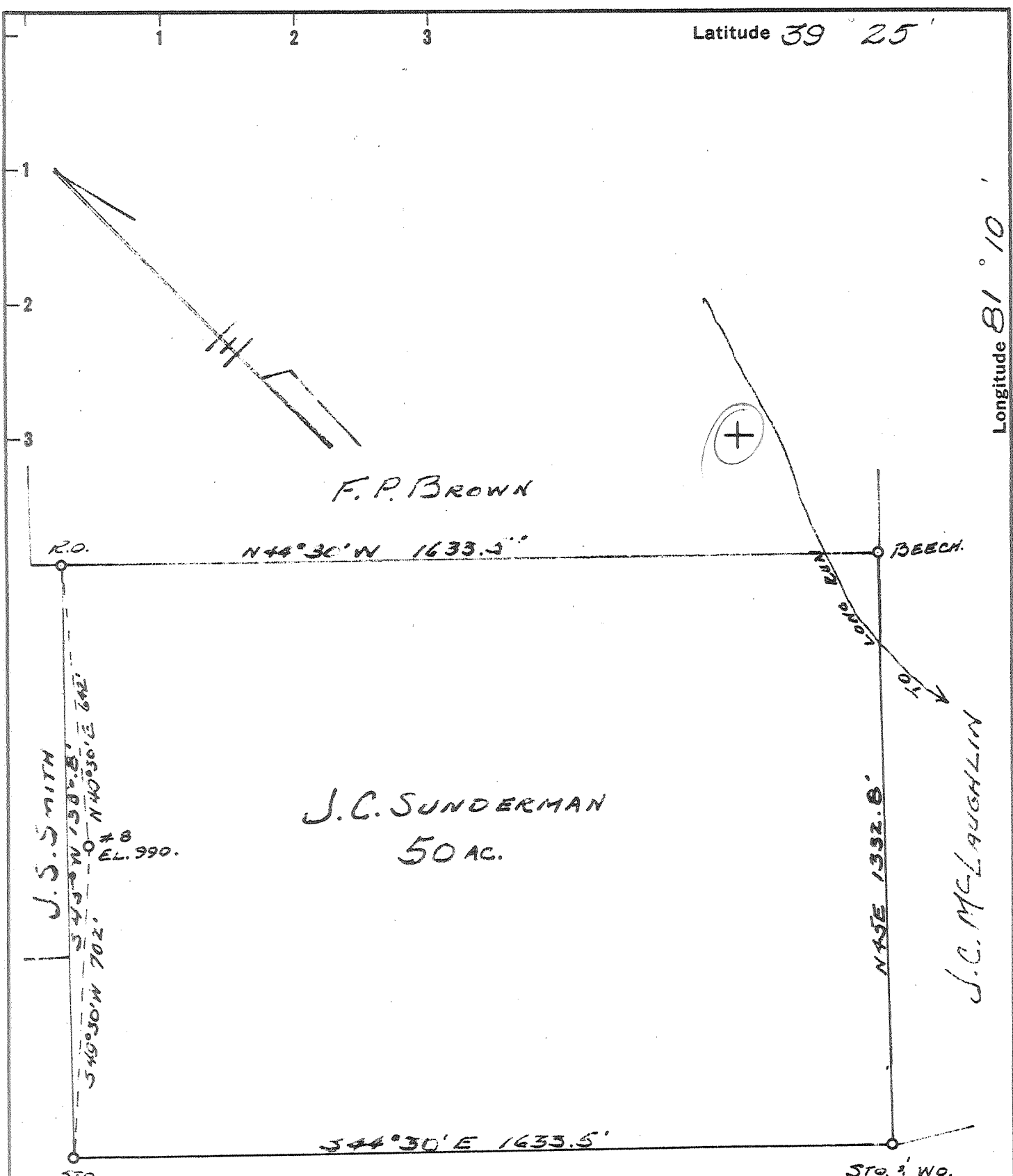


Latitude 39° 25'

Longitude 81° 10'



- New Location
- Drill Deeper
- Abandonment

SEP 19 1960

7105 W
3.72

Company HART & HAMILTON
 Address ST. MARYS, W.VA.
 Farm J.C. SUNDERMAN
 Tract _____ Acres 50 Lease No. 13
 Well (Farm) No. 8 Serial No. _____
 Elevation (Spirit Level) 990'
 Quadrangle ST. MARYS
 County PLEASANTS District WASHINGTON
 Engineer JOHN W. HAMILTON
 Engineer's Registration No. 2274
 File No. _____ Drawing No. 220
 Date AUG. 30, 1960 Scale 1" = 300'

STATE OF WEST VIRGINIA
 DEPARTMENT OF MINES
 OIL AND GAS DIVISION
 CHARLESTON

WELL LOCATION MAP
 FILE NO. PLEAS-881-A

- + Denotes location of well on United States Topographic Maps, scale 1 to 62,500, latitude and longitude lines being represented by border lines as shown.
- Denotes one inch spaces on border line of original tracing.

J.C. SUNDERMAN No. 8 - HART & HAMILTON - PLEAS-881-A