

Latitude 39° 25'

Longitude 81° 10'

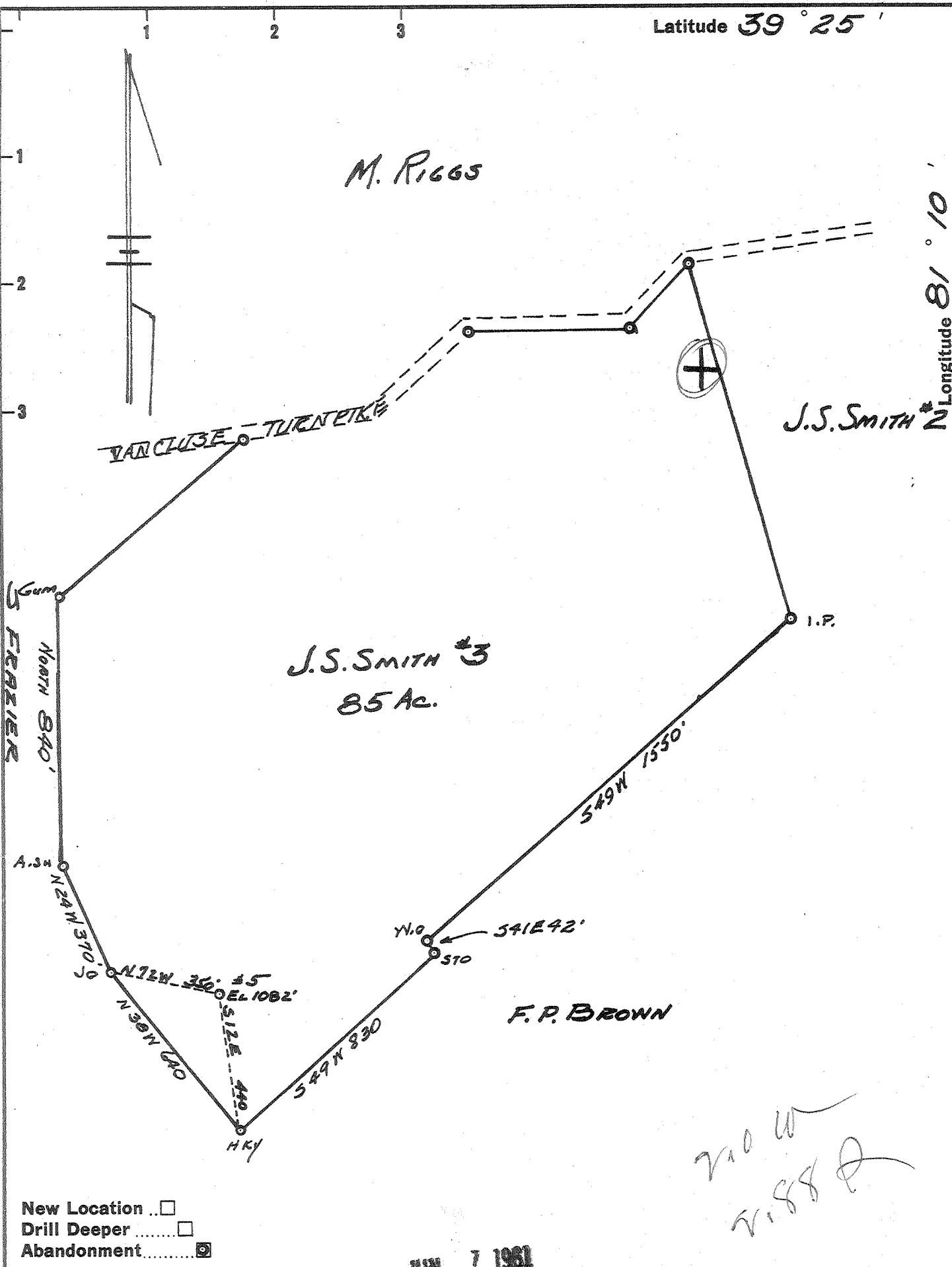
M. RIGGS

J.S. SMITH #2

J.S. SMITH #3
85 Ac.

F. P. BROWN

*no w
riggs*



- New Location
- Drill Deeper
- Abandonment

JUN 7 1961

Company LEONARD HART
 Address ST. MARYS, W.VA.
 Farm J.S. SMITH
 Tract 3 Acres 85 Lease No. 11
 Well (Farm) No. 5 Serial No. _____
 Elevation (Spirit Level) 1082'
 Quadrangle ST. MARYS.
 County PLEASANTS District WASHINGTON
 Engineer JOHN W. HAMILTON
 Engineer's Registration No. 2274
 File No. _____ Drawing No. 234
 Date SEPT 10, 1960 Scale 1" = 400'

STATE OF WEST VIRGINIA
DEPARTMENT OF MINES
OIL AND GAS DIVISION
CHARLESTON

WELL LOCATION MAP
FILE NO. Pleas-889-A

- + Denotes location of well on United States Topographic Maps, scale 1 to 62,500, latitude and longitude lines being represented by border lines as shown.
- Denotes one inch spaces on border line of original tracing.

J.S. SMITH OR. 5

LEONARD HART

PLEAS-889-A