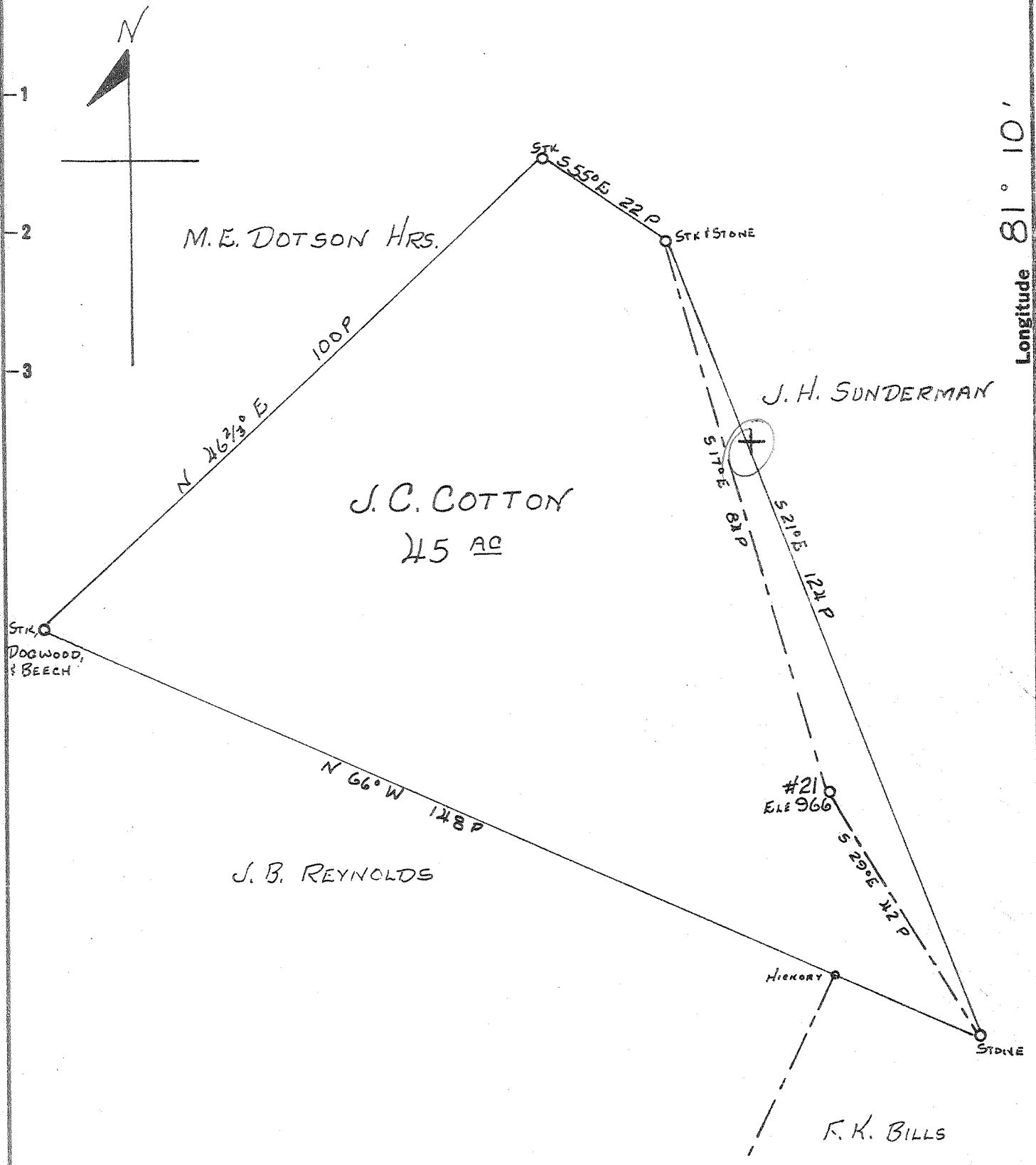


Latitude 39° 25'

Longitude 81° 10'



New Location
 Drill Deeper
 Abandonment

JUL 24 1961

Handwritten signatures and initials:
 m/w
 2-7-61

| | |
|-----------------------------|---|
| Company | LEONARD HART |
| Address | 702 2 ND ST. ST. MARYS, W. VA. |
| Farm | J. C. COTTON 45-A |
| Tract | 1 Acres 45 Lease No. 12 |
| Well (Farm) No. | 21 Serial No. 9 |
| Elevation (Spirit Level) | 966 |
| Quadrangle | ST. MARYS |
| County | PLEASANTS District WASHINGTON |
| Engineer | John W. Hamilton |
| Engineer's Registration No. | 2274 |
| File No. | Drawing No. |
| Date | MAY 1, 1961 Scale 1" = 20 P |

STATE OF WEST VIRGINIA
 DEPARTMENT OF MINES
 OIL AND GAS DIVISION
 CHARLESTON

WELL LOCATION MAP
 FILE NO. PLEAS-901-A

+ Denotes location of well on United States Topographic Maps, scale 1 to 62,500, latitude and longitude lines being represented by border lines as shown.
 - Denotes one inch spaces on border line of original tracing.

J. C. COTTON No. 21 (9) - LEONARD HART - PLEAS-901-A



274

STATE OF WEST VIRGINIA
DEPARTMENT OF MINES
OIL AND GAS DIVISION

Quadrangle St. Marys
Permit No. 901A

WELL RECORD

Oil or Gas Well Oil
(KIND)

Company Leonard Hart
Address 702 Second Street, St. Marys, W. Va.
Farm J. C. Cotton Acres 45
Location (waters) Long Run
Well No. 21 Elev. 966
District Washington County Pleasants
The surface of tract is owned in fee by J.C.Cotton Heirs
Address _____
Mineral rights are owned by J.C.Cotton Heirs
Address _____
Drilling commenced _____
Drilling completed August, 1902
Date Shot _____ From _____ To _____
With _____
Open Flow _____ /10ths Water in _____ Inch
_____ /10ths Merc. in _____ Inch
Volume _____ Cu. Ft.
Rock Pressure _____ lbs. _____ hrs.
Oil _____ bbls., 1st 24 hrs.
WELL ACIDIZED _____
WELL FRACTURED _____

| Casing and Tubing | Used in Drilling | Left in Well | Packers |
|--------------------|------------------|--------------|----------------|
| Size | | | Kind of Packer |
| 16 | | | |
| 13 | | | |
| 10 | | | Size of |
| 8 1/4 | | | |
| 8 6-1/4 | 788' | | Depth set |
| 5 3/16 | | | |
| 3 | | | Perf. top |
| 2 | | | Perf. bottom |
| Liners Used | | | Perf. top |
| | | | Perf. bottom |

CASING CEMENTED _____ SIZE _____ No. Ft. _____ Date _____

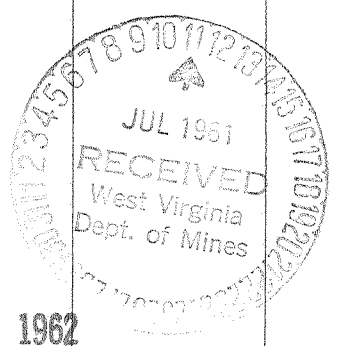
COAL WAS ENCOUNTERED AT _____ FEET _____ INCHES
_____ FEET _____ INCHES FEET _____ INCHES
_____ FEET _____ INCHES FEET _____ INCHES

RESULT AFTER TREATMENT _____

ROCK PRESSURE AFTER TREATMENT _____

Fresh Water _____ Feet Salt Water _____ Feet

| Formation | Color | Hard or Soft | Top | Bottom | Oil, Gas or Water | Depth | Remarks |
|-------------|-------|--------------|-----|--------|-------------------|-------|---------|
| Cow Run | | | 791 | 820 | | | |
| Total Depth | | | | 820 | | | |



APR 6 1962

| Formation | Color | Hard or Soft | Top | Bottom | Oil, Gas or Water | Depth Found | Remarks |
|-----------|-------|--------------|-----|--------|-------------------|-------------|---------|
| | | | | | | | |

Date July 7, 19 61

APPROVED LEONARD HART, Owner

By Leonard Hart
(Title)