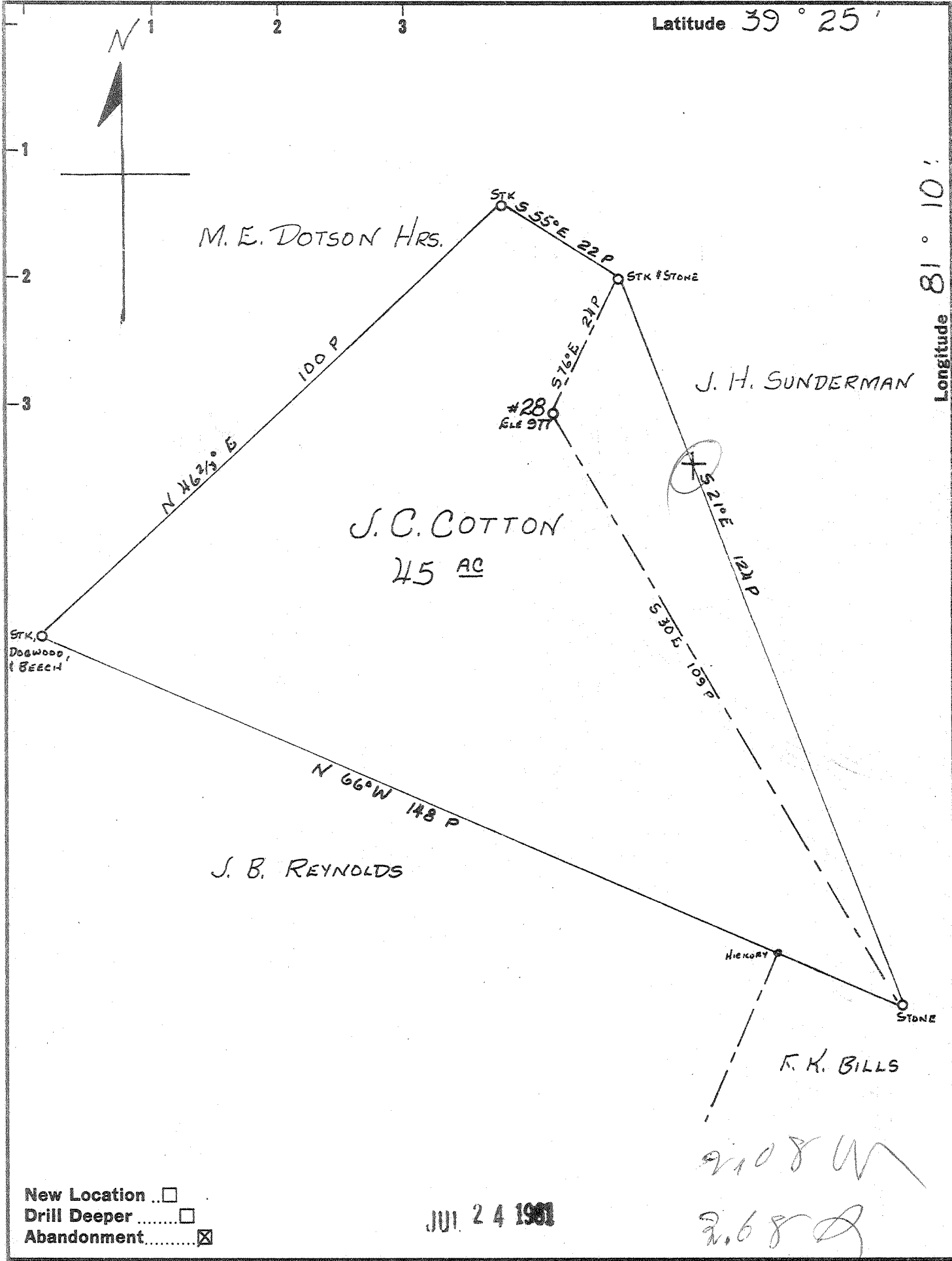


Latitude 39° 25'

Longitude 81° 10'



New Location
 Drill Deeper
 Abandonment

JUL 24 1961

9108 W
9.68

Company LEONARD HART
 Address 702 2ND ST. ST. MARYS, W. VA.
 Farm J. C. COTTON 45-A
 Tract 1 Acres 45 Lease No. 12
 Well (Farm) No. 28 Serial No. 7
 Elevation (Spirit Level) 977
 Quadrangle ST. MARYS
 County PLEASANTS District WASHINGTON
 Engineer John W. Hamilton
 Engineer's Registration No. 2274
 File No. _____ Drawing No. _____
 Date MAY 1, 1961 Scale 1" = 20 P

STATE OF WEST VIRGINIA
 DEPARTMENT OF MINES
 OIL AND GAS DIVISION
 CHARLESTON

WELL LOCATION MAP
 FILE NO. PLEAS-903-A

+ Denotes location of well on United States Topographic Maps, scale 1 to 62,500, latitude and longitude lines being represented by border lines as shown.
 - Denotes one inch spaces on border line of original tracing.