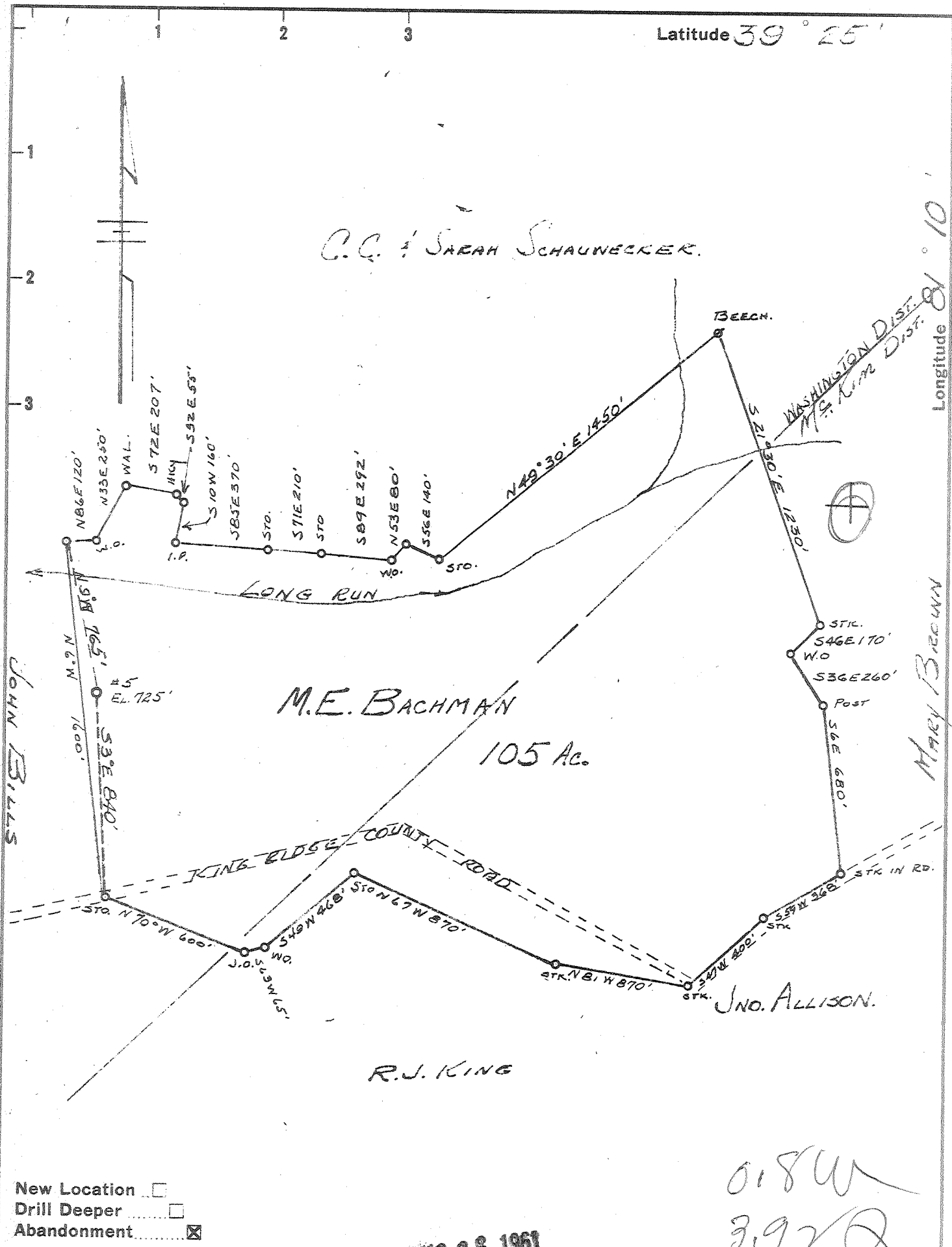


Latitude 39° 25'

C.C. & SARAH SCHAUNWECKER.



- New Location
- Drill Deeper
- Abandonment

AUG 28 1961

0.8 W  
3.9 2 Q

Company LEONARD HART  
 Address ST. MARYS, W. VA.  
 Farm M.E. BACHMAN  
 Tract \_\_\_\_\_ Acres 105 Lease No. 36  
 Well (Farm) No. 5 Serial No. \_\_\_\_\_  
 Elevation (Spirit Level) 725'  
 Quadrangle ST. MARYS.  
 County PLEASANTS District WASHINGTON  
 Engineer JOHN W. HAMILTON  
 Engineer's Registration No. 2274  
 File No. \_\_\_\_\_ Drawing No. 205  
 Date AUG. 17, 1960 Scale 1" = 500'

STATE OF WEST VIRGINIA  
DEPARTMENT OF MINES  
OIL AND GAS DIVISION  
CHARLESTON

WELL LOCATION MAP  
FILE NO. PLEAS-907-A

- + Denotes location of well on United States Topographic Maps, scale 1 to 62,500, latitude and longitude lines being represented by border lines as shown.
- Denotes one inch spaces on border line of original tracing.

M.E. BACHMAN No. 5 — LEONARD HART — PLEAS-907A



240

STATE OF WEST VIRGINIA  
DEPARTMENT OF MINES  
OIL AND GAS DIVISION

Quadrangle St. Marys

Permit No. 907A

WELL RECORD

Oil or Gas Well Oil  
(KIND)

Company Leonard Hart  
Address 702 Second Street, St. Marys, W. Va.  
Farm M. E. Bachman Acres 105

Location (waters) \_\_\_\_\_  
Well No. 5 Elev. 725'  
District Washington County Pleasants

The surface of tract is owned in fee by \_\_\_\_\_  
Address \_\_\_\_\_

Mineral rights are owned by Bertha & Edith Low  
1417 South Hoover St., Address Los Angeles 6, Calif.

Drilling commenced 8-1900

Drilling completed \_\_\_\_\_

Date Shot \_\_\_\_\_ From \_\_\_\_\_ To \_\_\_\_\_

With \_\_\_\_\_

Open Flow \_\_\_\_\_ /10ths Water in \_\_\_\_\_ Inch

Volume \_\_\_\_\_ /10ths Merc. in \_\_\_\_\_ Inch

Rock Pressure \_\_\_\_\_ lbs. \_\_\_\_\_ hrs.

Oil \_\_\_\_\_ bbls., 1st 24 hrs.

WELL ACIDIZED \_\_\_\_\_

WELL FRACTURED \_\_\_\_\_

Casing and Tubing	Used in Drilling	Left in Well	Packers
Size			Kind of Packer
16.			
13.			
10.			Size of
8 1/4			
<del>1 1/2</del> 6-1/4		615'	Depth set
5 3/16			
3.			Perf. top
2.			Perf. bottom
Liners Used			Perf. top
			Perf. bottom

CASING CEMENTED \_\_\_\_\_ SIZE \_\_\_\_\_ No. Ft. \_\_\_\_\_ Date \_\_\_\_\_

COAL WAS ENCOUNTERED AT \_\_\_\_\_ FEET \_\_\_\_\_ INCHES

\_\_\_\_\_ FEET \_\_\_\_\_ INCHES \_\_\_\_\_ FEET \_\_\_\_\_ INCHES

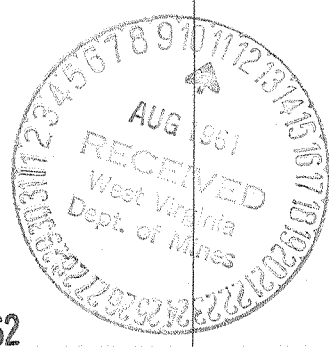
\_\_\_\_\_ FEET \_\_\_\_\_ INCHES \_\_\_\_\_ FEET \_\_\_\_\_ INCHES

RESULT AFTER TREATMENT \_\_\_\_\_

ROCK PRESSURE AFTER TREATMENT \_\_\_\_\_

Fresh Water \_\_\_\_\_ Feet \_\_\_\_\_ Salt Water \_\_\_\_\_ Feet \_\_\_\_\_

Formation	Color	Hard or Soft	Top	Bottom	Oil, Gas or Water	Depth	Remarks
Cow Run			621'	670'			
Total Depth				676'			



APR 6 1962

(over)

Formation	Color	Hard or Soft	Top	Bottom	Oil, Gas or Water	Depth Found	Remarks

Date AUG 7 1961, 19\_\_\_\_  
APPROVED LEONARD HART, Owner  
By *Donald Stuss* (Title)