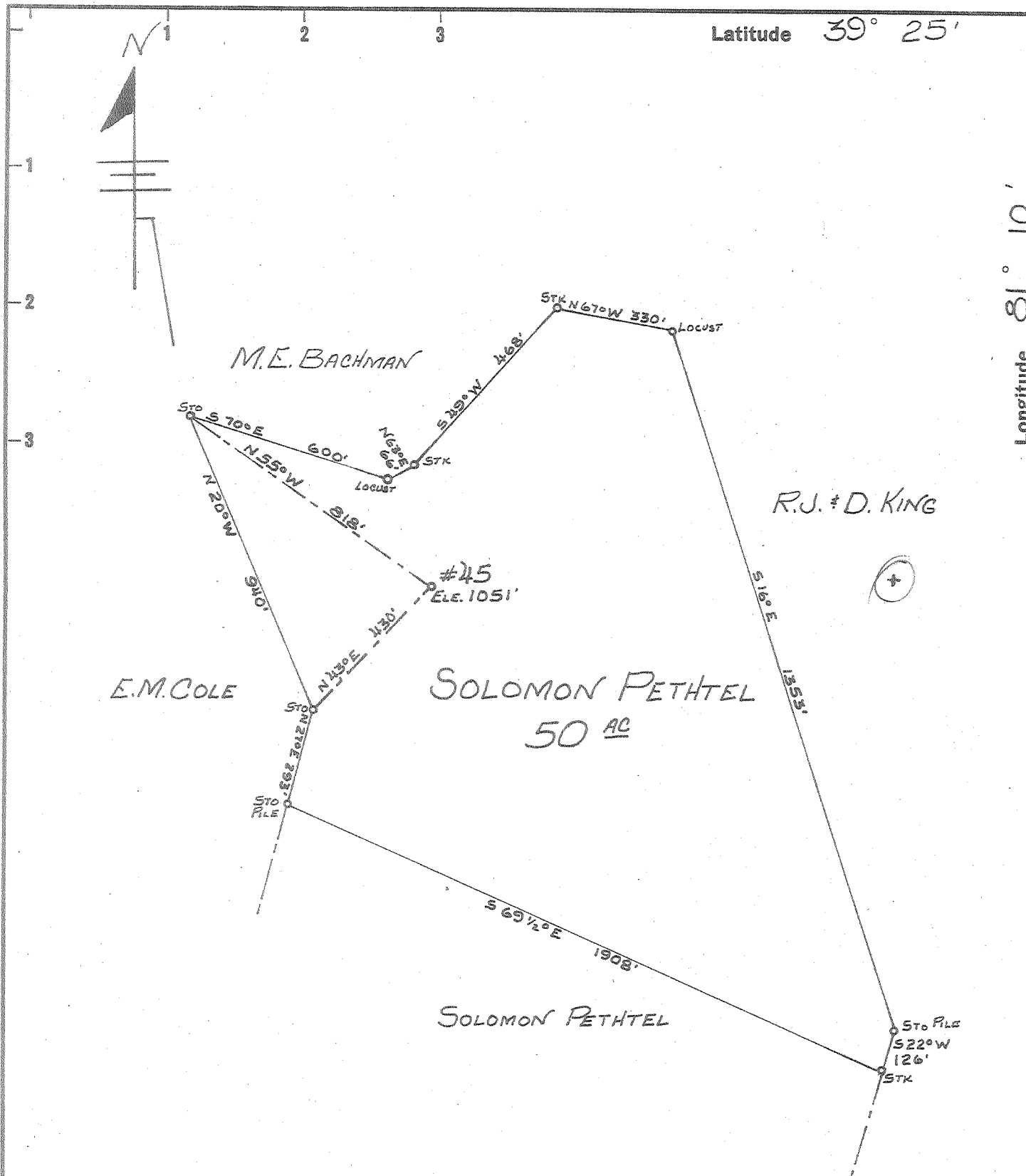
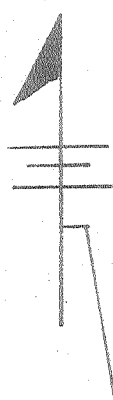


Latitude 39° 25'

Longitude 81° 10'



New Location ..   
Drill Deeper ..   
Abandonment.....

OCT - 2 1961

HOW  
Y.I.V.A

Company	LEONARD HART
Address	702 SECOND STREET ST. MARYS, W.VA.
Farm	SOLOMON PETHTEL
Tract	Acres 50 Lease No.
Well (Farm) No.	45 Serial No.
Elevation (Spirit Level)	1051'
Quadrangle	ST. MARYS
County	PLEASANTS District MCKIM
Engineer	John W. Hamilton
Engineer's Registration No.	2274
File No.	Drawing No.
Date	9-15-61 Scale 1" = 400'

STATE OF WEST VIRGINIA  
DEPARTMENT OF MINES  
OIL AND GAS DIVISION  
CHARLESTON

**WELL LOCATION MAP**  
FILE NO. PLE 933-A

+ Denotes location of well on United States Topographic Maps, scale 1 to 62,500, latitude and longitude lines being represented by border lines as shown.

- Denotes one inch spaces on border line of original tracing.