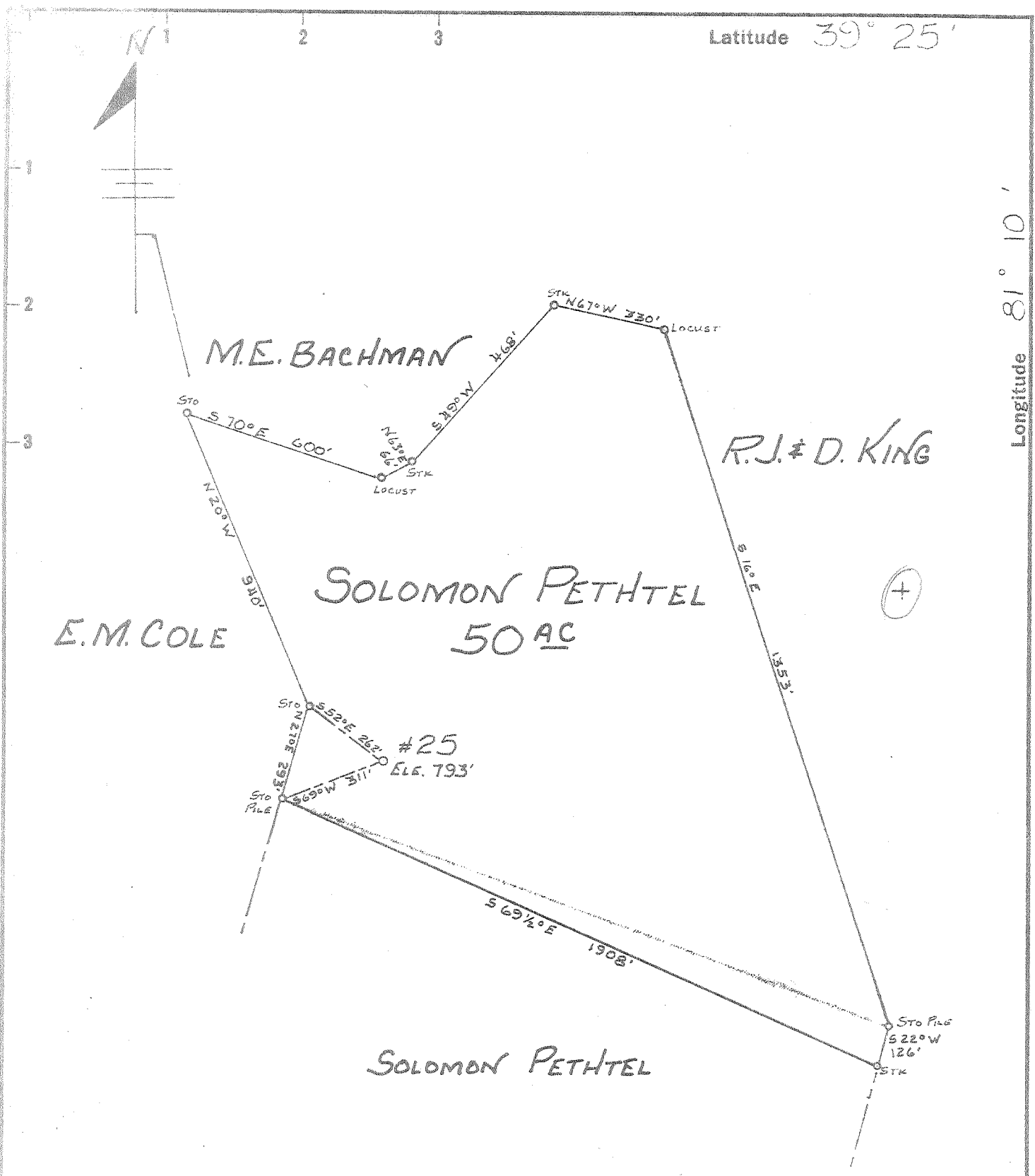
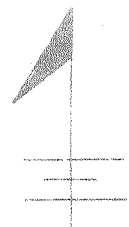


Latitude 39° 25'

Longitude 81° 10'



New Location   
 Drill Deeper   
 Abandonment

OCT 16 1961

0193W  
 Y.M.D.

Company LEONARD HART  
 Address 702 2ND ST. ST. MARYS, W. VA.  
 Farm SOLOMON PETHTEL  
 Tract \_\_\_\_\_ Acres 50 Lease No. \_\_\_\_\_  
 Well (Farm) No. 25 Serial No. \_\_\_\_\_  
 Elevation (Spirit Level) 793'  
 Quadrangle ST. MARYS  
 County PLEASANTS District McKIM  
 Engineer John W. Hamilton  
 Engineer's Registration No. 2271  
 File No. \_\_\_\_\_ Drawing No. \_\_\_\_\_  
 Date 9-15-61 Scale 1" = 400'

STATE OF WEST VIRGINIA  
 DEPARTMENT OF MINES  
 OIL AND GAS DIVISION  
 CHARLESTON

**WELL LOCATION MAP**  
 FILE NO. PLEAS-937-A

+ Denotes location of well on United States Topographic Maps, scale 1 to 62,500, latitude and longitude lines being represented by border lines as shown.  
 - Denotes one inch spaces on border line of original tracing.

SOLOMON PETHTEL No. 25 - LEONARD HART - PLEAS-937A



280

STATE OF WEST VIRGINIA  
DEPARTMENT OF MINES  
OIL AND GAS DIVISION

Quadrangle St. Marys  
Permit No. FLEA-937 A

WELL RECORD

Oil or Gas Well Oil  
(KIND)

Company Leonard Hart  
 Address 702 Second Street, St. Marys, W. Va.  
 Farm Solomon Pethtel Acres 50  
 Location (waters) French Creek  
 Well No. 25 Elev. 793'  
 District McKim County Pleasants  
 The surface of tract is owned in fee by Solomon Pethtel Hrs.  
 Address St. Marys, W. Va.  
 Mineral rights are owned by Solomon Pethtel Hrs.  
 Address St. Marys, W. Va.  
 Drilling commenced \_\_\_\_\_  
 Drilling completed October, 1901  
 Date Shot \_\_\_\_\_ From \_\_\_\_\_ To \_\_\_\_\_  
 With \_\_\_\_\_  
 Open Flow \_\_\_\_\_ /10ths Water in \_\_\_\_\_ Inch  
 \_\_\_\_\_ /10ths Merc. in \_\_\_\_\_ Inch  
 Volume \_\_\_\_\_ Cu. Ft.  
 Rock Pressure \_\_\_\_\_ lbs. \_\_\_\_\_ hrs.  
 Oil \_\_\_\_\_ bbls., 1st 24 hrs.  
 WELL ACIDIZED \_\_\_\_\_  
 WELL FRACTURED \_\_\_\_\_

Casing and Tubing	Used in Drilling	Left in Well	Packers
Size			Kind of Packer
16			
13			
10			Size of
8 1/4			
<del>8</del> 6-1/4	<u>650'</u>		Depth set
5 3/16			
3			Perf. top
2			Perf. bottom
Liners Used			Perf. top
			Perf. bottom

CASING CEMENTED \_\_\_\_\_ SIZE \_\_\_\_\_ No. Ft. \_\_\_\_\_ Date \_\_\_\_\_

COAL WAS ENCOUNTERED AT \_\_\_\_\_ FEET \_\_\_\_\_ INCHES  
 \_\_\_\_\_ FEET \_\_\_\_\_ INCHES FEET \_\_\_\_\_ INCHES  
 \_\_\_\_\_ FEET \_\_\_\_\_ INCHES FEET \_\_\_\_\_ INCHES

RESULT AFTER TREATMENT \_\_\_\_\_

ROCK PRESSURE AFTER TREATMENT \_\_\_\_\_

Fresh Water \_\_\_\_\_ Feet Salt Water \_\_\_\_\_ Feet

Formation	Color	Hard or Soft	Top	Bottom	Oil, Gas or Water	Depth	Remarks
<u>Cow Run</u>			<u>674</u>	<u>702</u>			
<u>Total Depth</u>				<u>717'</u>			



APR 6 1962

