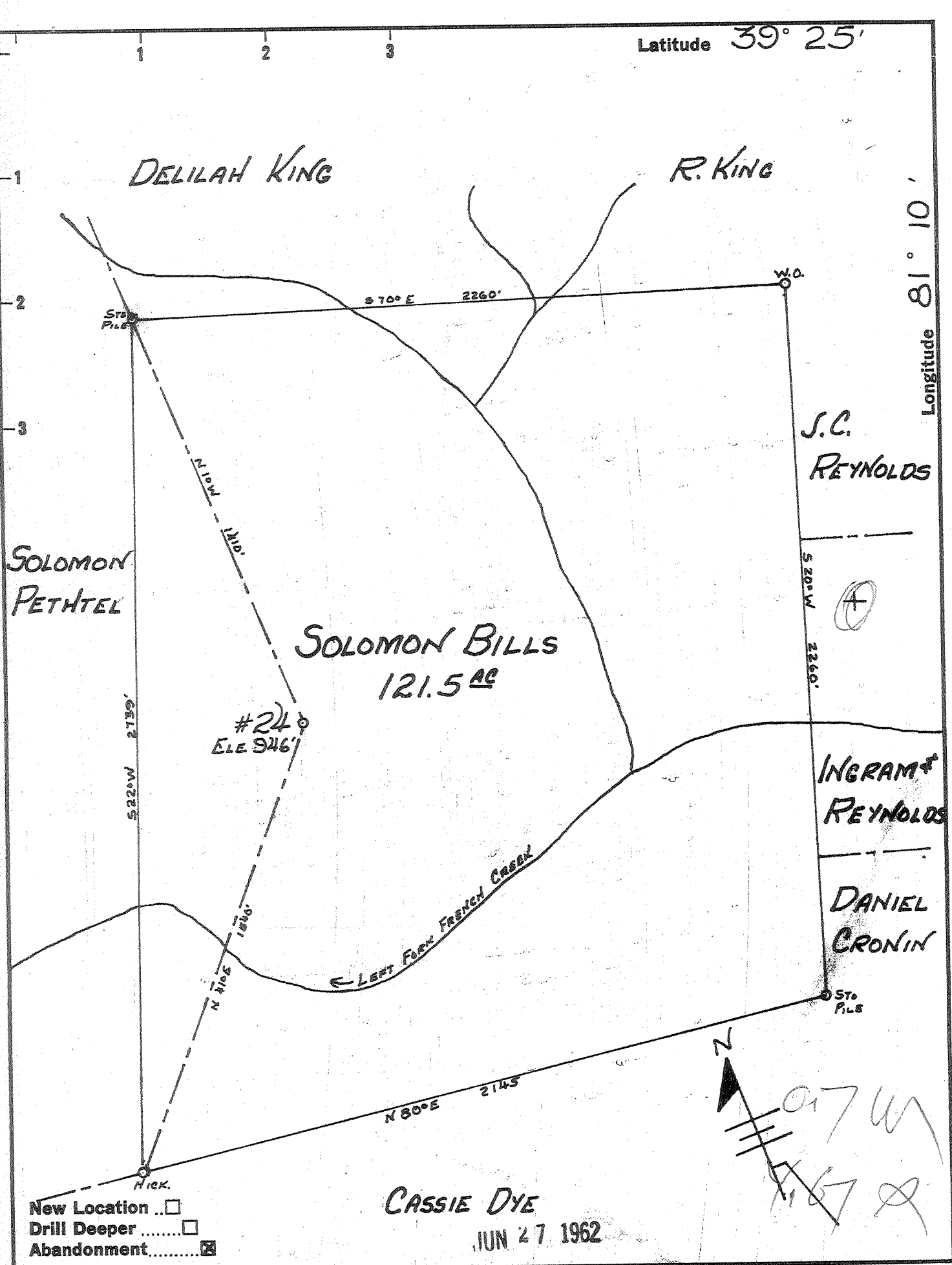


Latitude 39° 25'

Longitude 81° 10'



New Location
 Drill Deeper
 Abandonment

CASSIE DYE
 JUN 27 1962

Company LEONARD HART
 Address 102 2ND ST. ST. MARYS, W. VA.
 Farm SOLOMON BILLS
 Tract _____ Acres 121.5 Lease No. _____
 Well (Farm) No. 24 Serial No. _____
 Elevation (Spirit Level) 946'
 Quadrangle ST. MARYS
 County PLEASANTS District McKIM
 Engineer John W. Hammett
 Engineer's Registration No. 2274
 File No. _____ Drawing No. _____
 Date 9-15-61 Scale 1" = 400'

STATE OF WEST VIRGINIA
 DEPARTMENT OF MINES
 OIL AND GAS DIVISION
 CHARLESTON

WELL LOCATION MAP
 FILE NO. PLEAS-966-A

+ Denotes location of well on United States Topographic Maps, scale 1 to 62,500, latitude and longitude lines being represented by border lines as shown.

- Denotes one inch spaces on border line of original tracing.