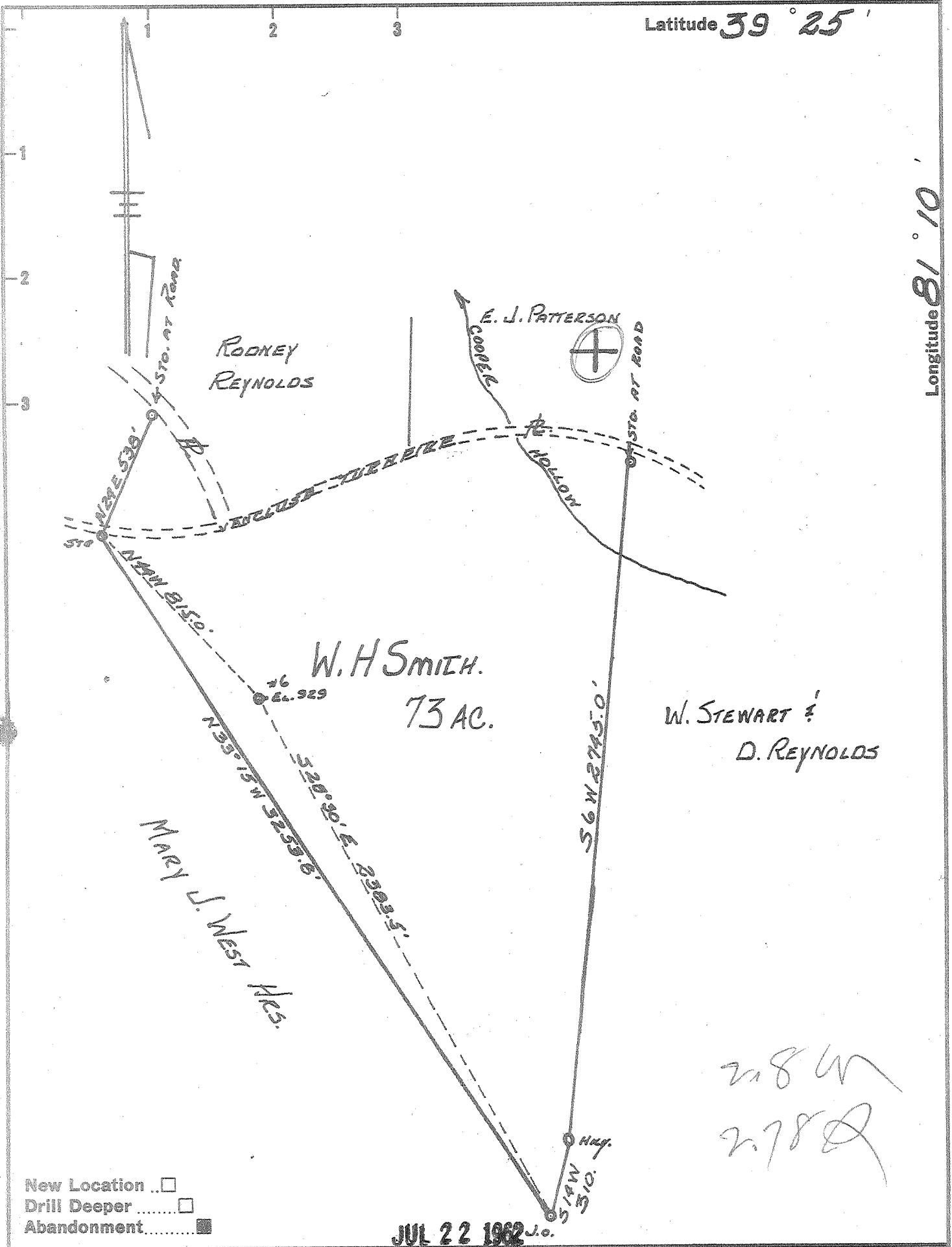


Latitude 39° 25'

Longitude 81° 10'



New Location
 Drill Deeper
 Abandonment

JUL 22 1962 J.O.

Company LEONARD HART
 Address ST. MARYS, W. VA
 Farm W. H. SMITH
 Tract 1 Acres 73 Lease No. 2
 Well (Farm) No. 6 Serial No. _____
 Elevation (Spirit Level) 929'
 Quadrangle ST MARYS
 County PLEASANTS District WASHINGTON
 Engineer JOHN W. HAMILTON
 Engineer's Registration No. 2274
 File No. _____ Drawing No. 247
 Date SEPT 20, 1960 Scale 1" = 500'

STATE OF WEST VIRGINIA
 DEPARTMENT OF MINES
 OIL AND GAS DIVISION
 CHARLESTON

WELL LOCATION MAP
 FILE NO. PLEAS-972-A

+ Denotes location of well on United States Topographic Maps, scale 1 to 62,500, latitude and longitude lines being represented by border lines as shown.

- Denotes one inch spaces on border line of original tracing.

218 W
 278 Q