

Latitude 39° 25'

Longitude 81° 10'

CLARENCE MAXWELL

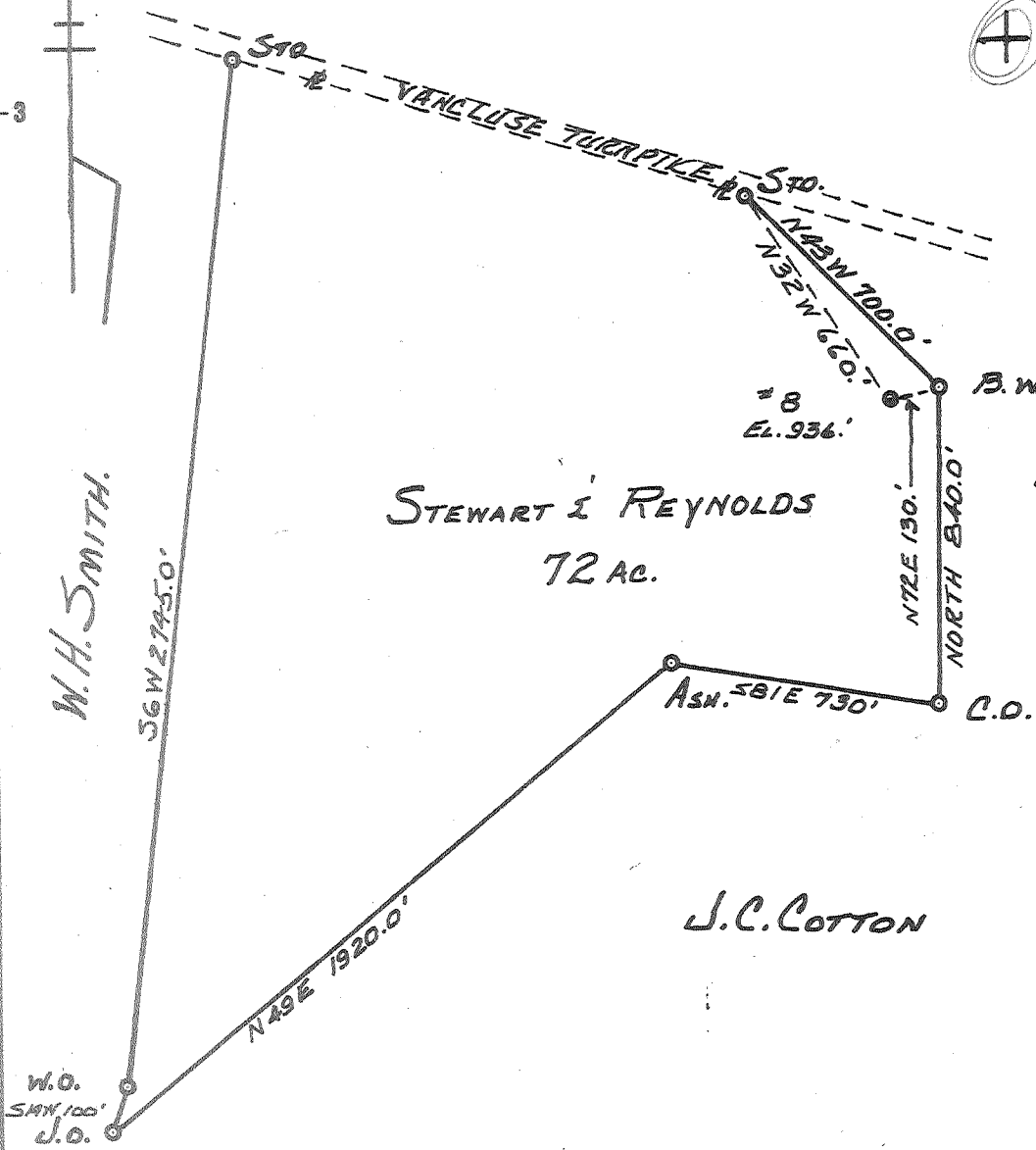


STEWART & REYNOLDS
72 AC.

J.C. SMITH.

J.C. COTTON

W.H. SMITH.



New Location ..
 Drill Deeper
 Abandonment.....

AUG - 1 1962

Handwritten signatures and initials:
 2/12 W
 2/80 A

Company LEONARD HART
 Address ST. MARYS, W.VA.
 Farm STEWART & REYNOLDS
 Tract _____ Acres 72 Lease No. 8
 Well (Farm) No. 8 Serial No. _____
 Elevation (Spirit Level) 936.0'
 Quadrangle ST. MARYS
 County PLEASANTS District WASHINGTON
 Engineer JOHN W. HAMILTON
 Engineer's Registration No. 2274
 File No. _____ Drawing No. 293
 Date Nov. 1, 1960 Scale 1" = 500'

STATE OF WEST VIRGINIA
 DEPARTMENT OF MINES
 OIL AND GAS DIVISION
 CHARLESTON

WELL LOCATION MAP
 FILE NO. PLEAS-980-A

+ Denotes location of well on United States Topographic Maps, scale 1 to 62,500, latitude and longitude lines being represented by border lines as shown.
 - Denotes one inch spaces on border line of original tracing.