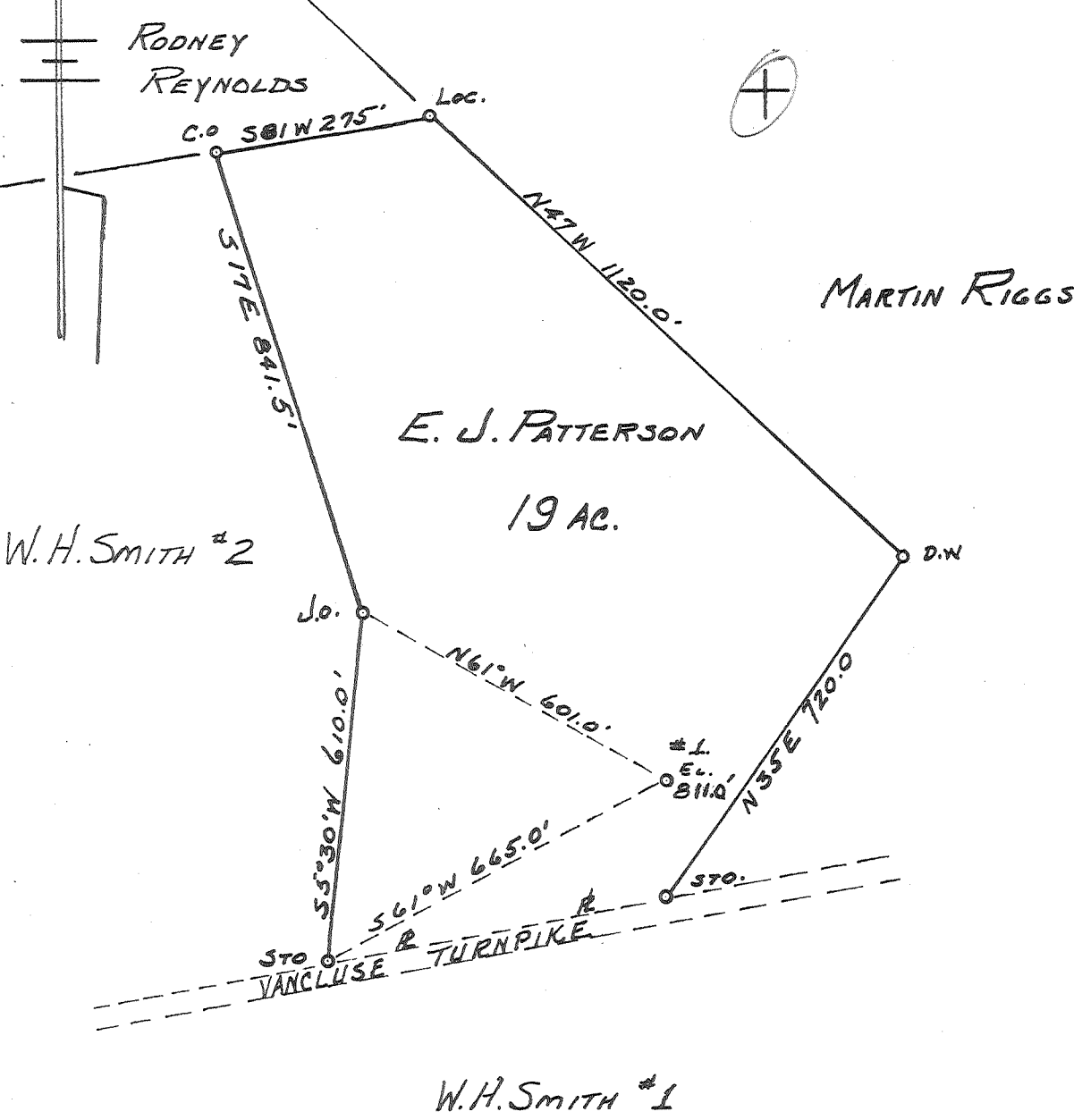


Latitude 39° 25'

Longitude 81° 10'



New Location

Drill Deeper

Abandonment

AUG 19 1962

2.42 W

2.58 Q

Company HART & HAMILTON

Address ST. MARYS. W. VA.

Farm E. J. PATTERSON

Tract _____ Acres 19 Lease No. 16

Well (Farm) No. 1 Serial No. _____

Elevation (Spirit Level) 811.0'

Quadrangle ST. MARYS

County PLEASANTS District WASHINGTON

Engineer JOHN W. HAMILTON

Engineer's Registration No. 2274

File No. _____ Drawing No. 263

Date SEPT 20, 1960 Scale 1" = 300'

STATE OF WEST VIRGINIA
DEPARTMENT OF MINES
OIL AND GAS DIVISION
CHARLESTON

WELL LOCATION MAP
FILE NO. PLEAS-987-A

+ Denotes location of well on United States Topographic Maps, scale 1 to 62,500, latitude and longitude lines being represented by border lines as shown.

- Denotes one inch spaces on border line of original tracing.