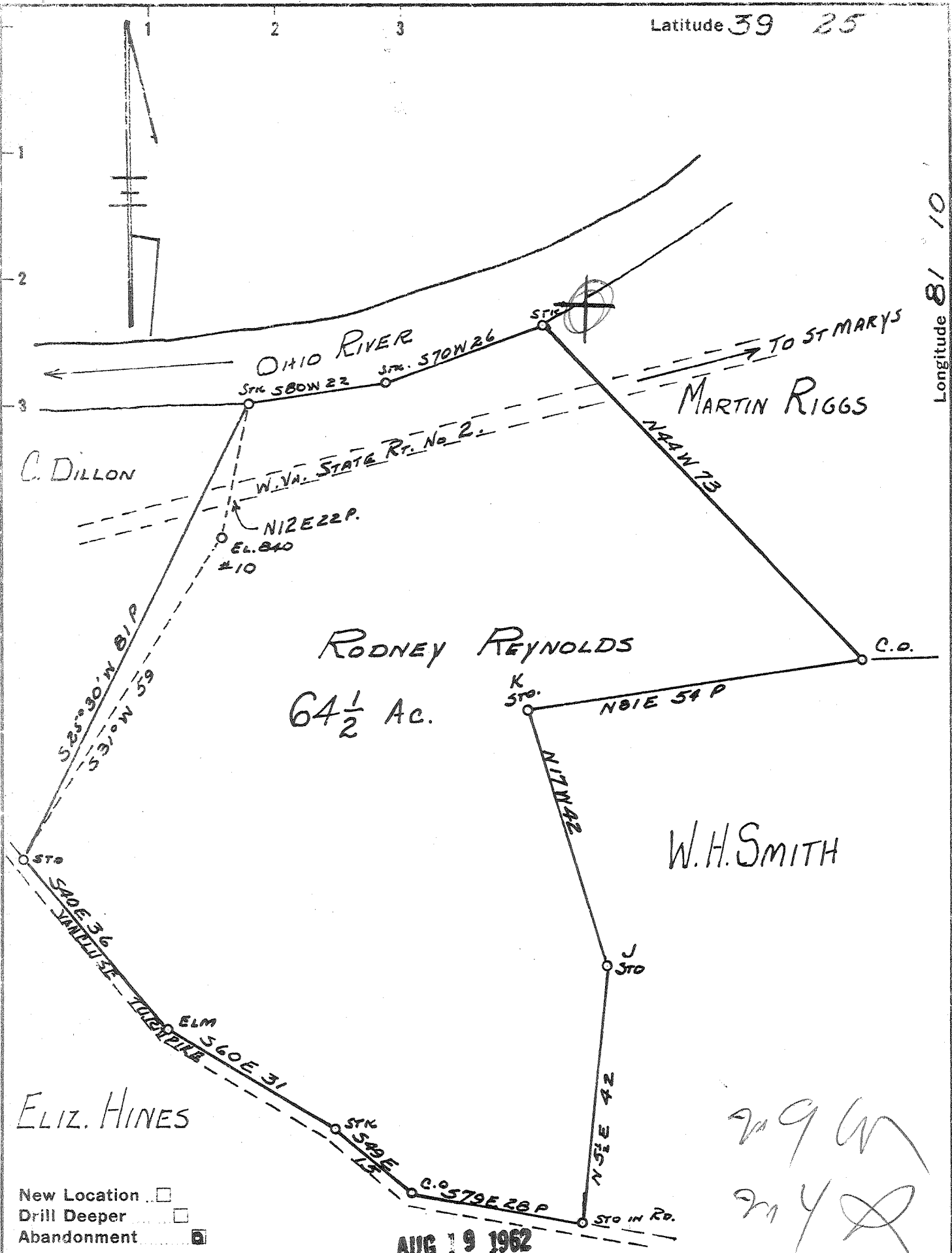


Latitude 39 25

Longitude 81 10



- New Location
- Drill Deeper
- Abandonment

AUG 19 1962

209 W  
214 X

Company LEONARD HART  
 Address ST. MARYS. W. VA.  
 Farm RODNEY REYNOLDS  
 Tract \_\_\_\_\_ Acres 64 1/2 Lease No. 3 3/4  
 Well (Farm) No. 10 Serial No. \_\_\_\_\_  
 Elevation (Spirit Level) 840'  
 Quadrangle ST. MARYS  
 County PLEASANTS District WASHINGTON  
 Engineer JOHN W. HAMILTON  
 Engineer's Registration No. 2274  
 File No. \_\_\_\_\_ Drawing No. 253  
 Date SEPT 20, 1960 Scale 1" = 20 POLES

STATE OF WEST VIRGINIA  
 DEPARTMENT OF MINES  
 OIL AND GAS DIVISION  
 CHARLESTON

WELL LOCATION MAP  
 FILE NO. PLEAS-1000-A

- + Denotes location of well on United States Topographic Maps, scale 1 to 62,500, latitude and longitude lines being represented by border lines as shown.
- Denotes one inch spaces on border line of original tracing.

RODNEY REYNOLDS No. 10 - LEONARD HART - PLEAS-1000-A