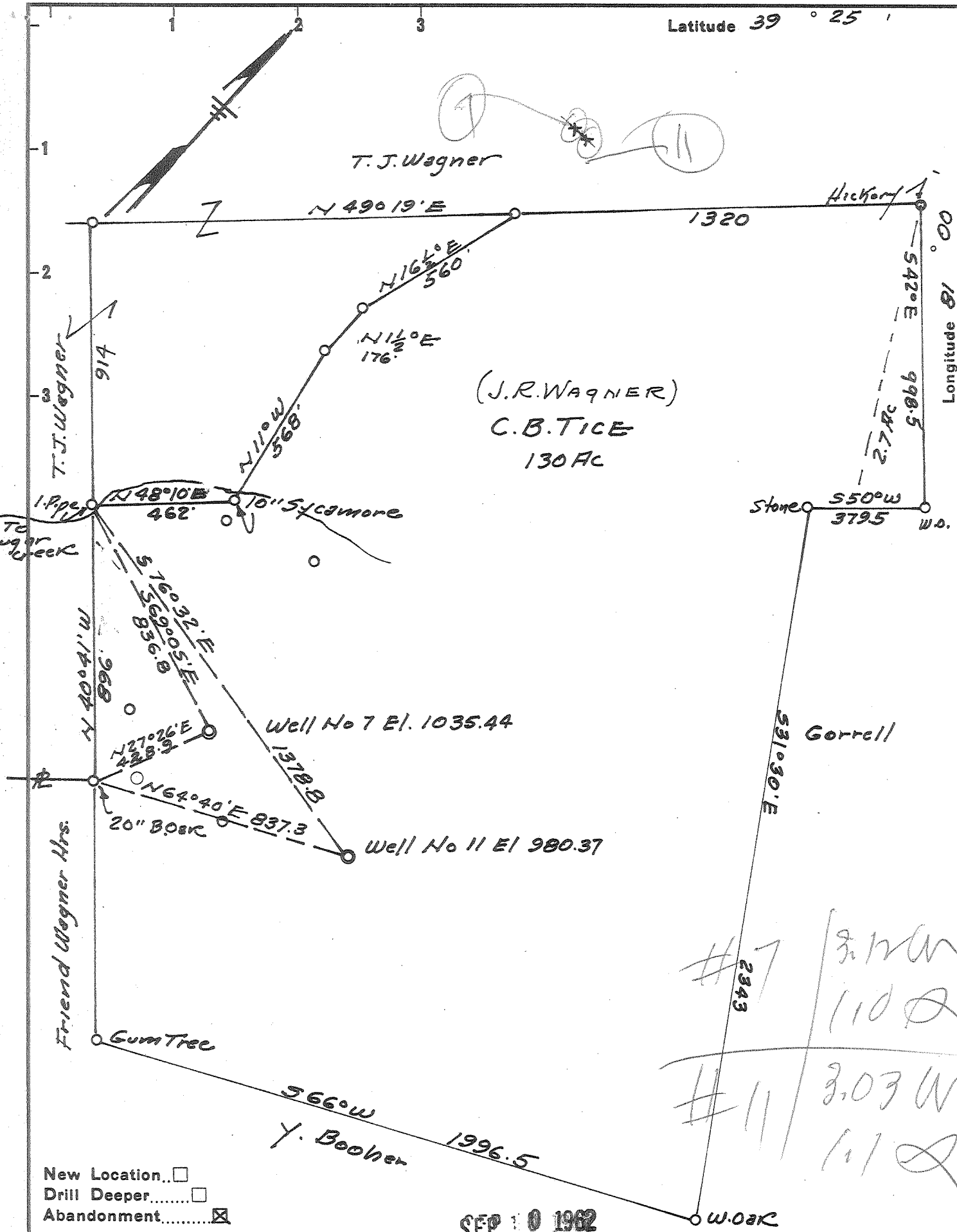


Latitude 39 ° 25

Longitude 81

T. J. Wagner

(J. R. WAGNER)
C. B. TICE
130 AC



New Location..
 Drill Deeper.....
 Abandonment.....

SEP 10 1962

Company LEONARD HART
 Address 702-2ND ST. ST. MARYS W. VA.
 Farm C. B. TICE
 Tract _____ Acres 130 Lease No. _____
 Well (Farm) No. 7 & 11 Serial No. _____
 Elevation (Spirit Level) (No 7-1035.44) No 11-980.37
 Quadrangle St. Marys
 County Pleasants District UNION
 Engineer H. F. Johnston
 Engineer's Registration No. 2492
 File No. _____ Drawing No. _____
 Date Aug 23, 1962 Scale 1" = 400

STATE OF WEST VIRGINIA
 DEPARTMENT OF MINES
 OIL AND GAS DIVISION
 CHARLESTON

WELL LOCATION MAP
 FILE NO. PLEAS-1014-A-#7
PLEAS-1015-A-#11

+ Denotes location of well on United States Topographic Maps, scale 1 to 62,500, latitude and longitude lines being represented by border lines as shown.
 - Denotes one inch spaces on border line of original tracing.

#7 3.12 W
110
#11 3.03 W
110