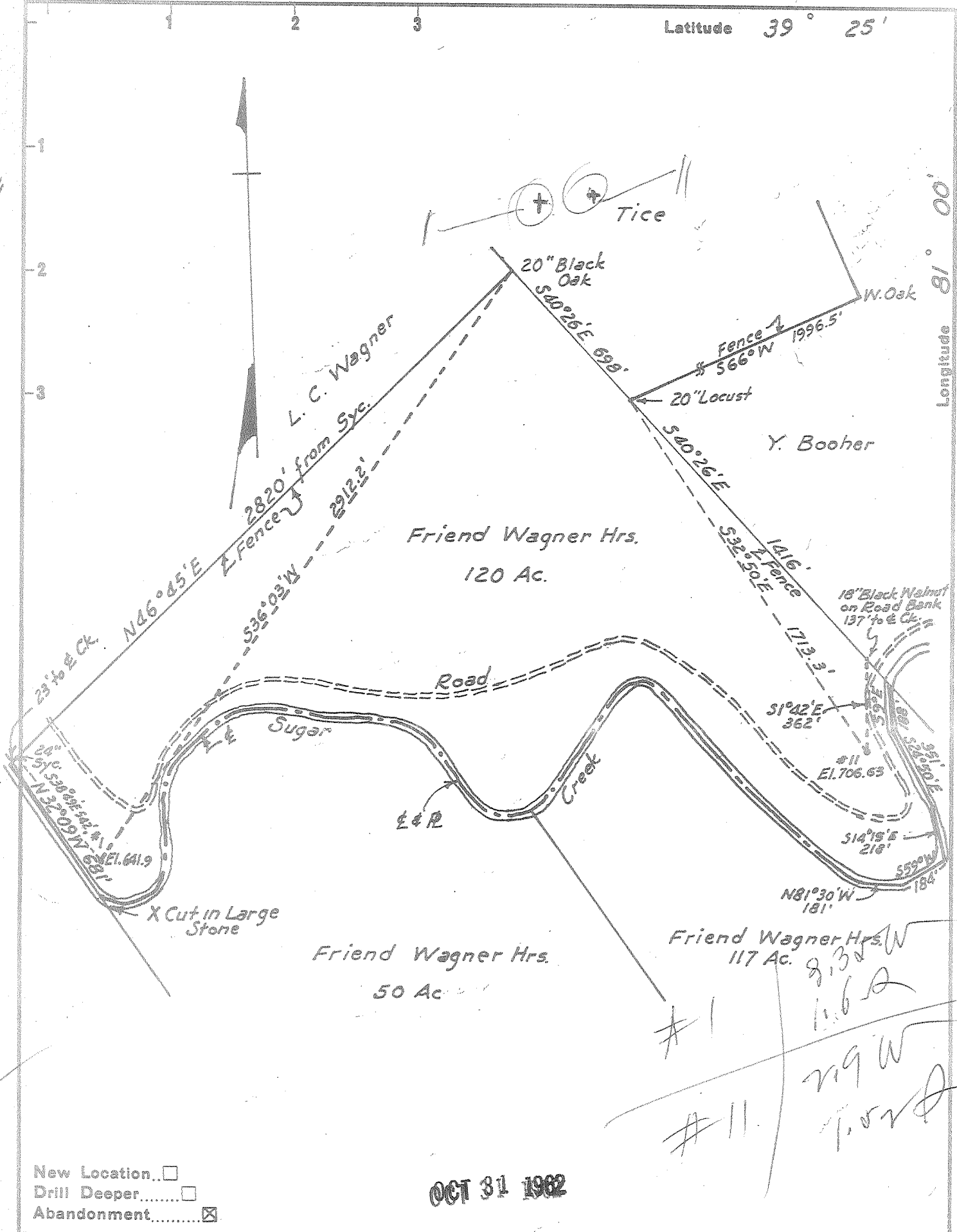


Latitude 39° 25'

Longitude 91° 00'



OCT 31 1962

- New Location...
- Drill Deeper.....
- Abandonment.....

Company Leonard Hart
 Address 702-2nd. St. St. Marys W. Va.
 Farm Friend Wagner Hrs.
 Tract _____ Acres 120 Lease No. _____
 Well (Farm) No. 1 & 11 Serial No. _____
 Elevation (Spirit Level) #1=641.9 #11=706.63
 Quadrangle St. Marys
 County Pleasants District Union
 Engineer H. F. Johnston
 Engineer's Registration No. 2092
 File No. _____ Drawing No. _____
 Date Oct. 1, 1962 Scale 1"=500'

STATE OF WEST VIRGINIA
 DEPARTMENT OF MINES
 OIL AND GAS DIVISION
 CHARLESTON

WELL LOCATION MAP

FILE NO. PLEAS-1028-A-#1
PLEAS-1034-A-#11

+ Denotes location of well on United States Topographic Maps, scale 1 to 62,500, latitude and longitude lines being represented by border lines as shown.

- Denotes one inch spaces on border line of original tracing.

FRIEND WAGNER HRS, No. 5, 1 & 11 — LEONARD HART — PLEAS 1028-A 1034-A