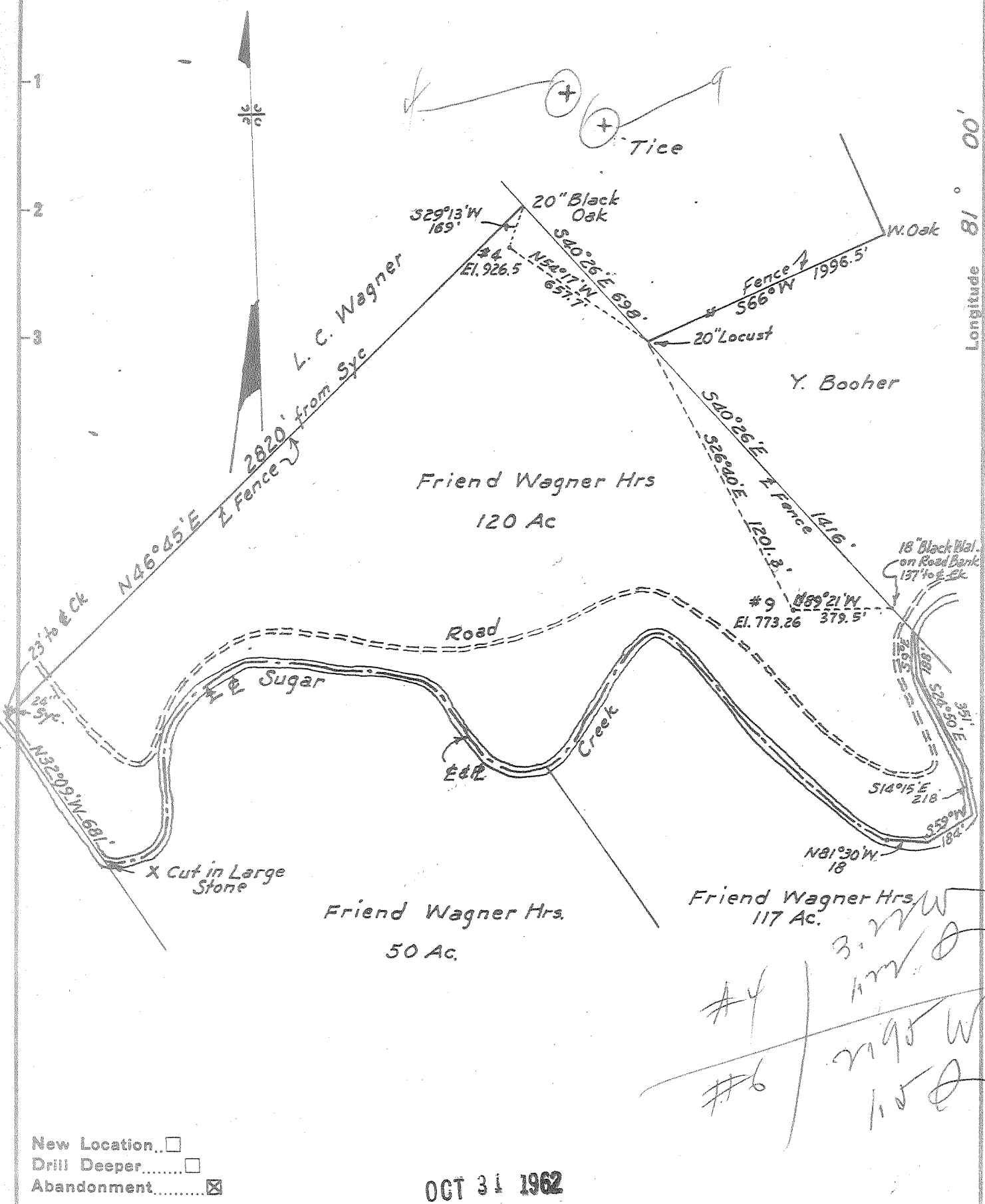


Latitude 39° 25'

Longitude 81° 00'



New Location..
 Drill Deeper.....
 Abandonment.....

OCT 31 1962

Company Leonard Hart
 Address 702-2nd. St., St. Marys, W. Va.
 Farm Friend Wagner Hrs
 Tract _____ Acres 120 Lease No. _____
 Well (Farm) No. #4 & #9 Serial No. _____
 Elevation (Spirit Level) #4=926.5 #9=773.26
 Quadrangle St. Marys
 County Pleasants District Union
 Engineer H. F. Johnston
 Engineer's Registration No. 2492
 File No. _____ Drawing No. _____
 Date Oct. 1, 1962 Scale 1"=500'

STATE OF WEST VIRGINIA
 DEPARTMENT OF MINES
 OIL AND GAS DIVISION
 CHARLESTON

WELL LOCATION MAP

FILE NO. PLEAS-1030-A-#4
PLEAS-1033-A-#9

+ Denotes location of well on United States Topographic Maps, scale 1 to 62,500, latitude and longitude lines being represented by border lines as shown.

- Denotes one inch spaces on border line of original tracing.

Handwritten notes:
 #4 / 3.22 W
 #6 / 2795 W
 1150

FRIEND WAGNER HRS. JO. 5A & 9 - LEONARD HART - PLEAS 1030-A - 1033-A