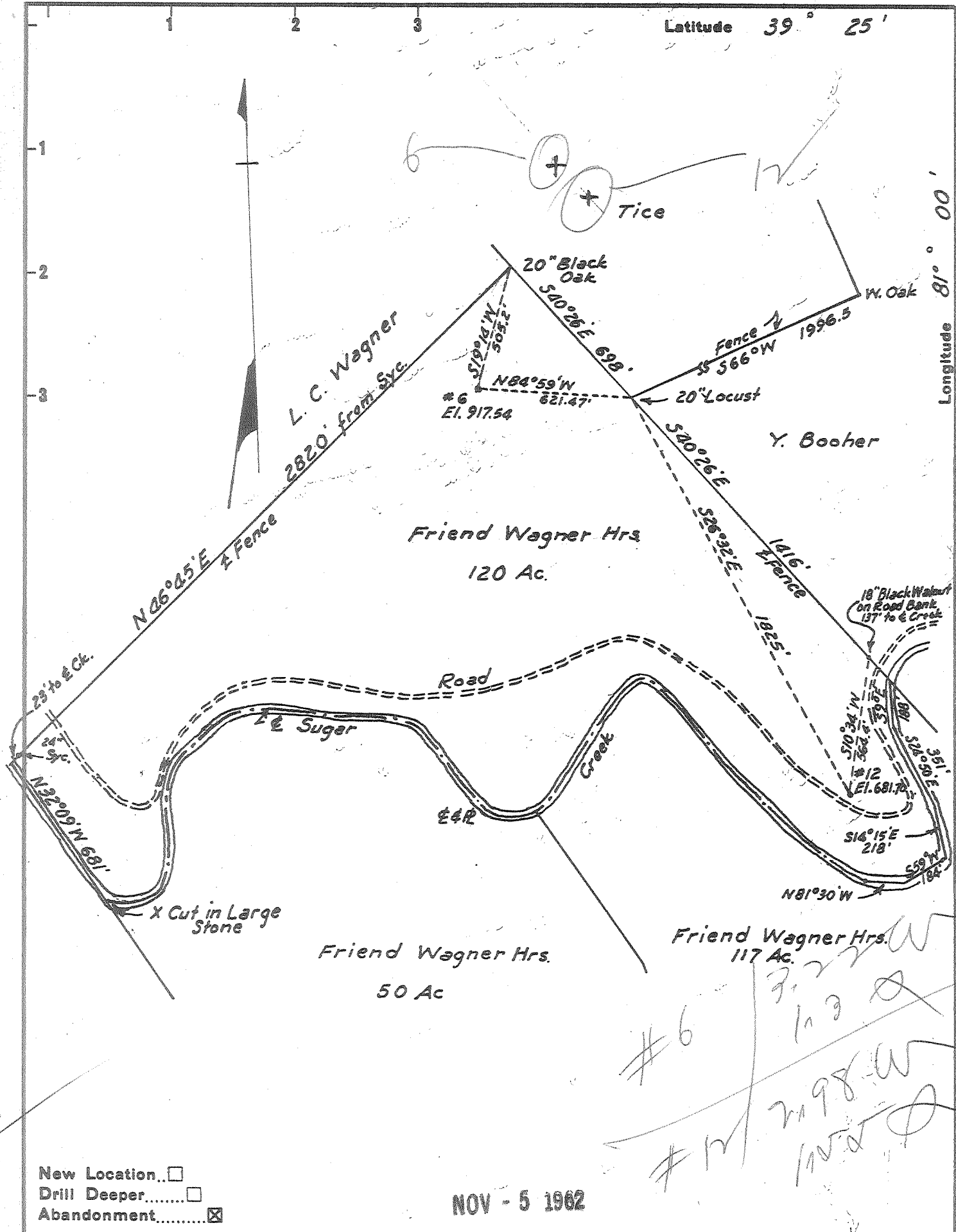


Latitude 39° 25'

Longitude 81° 00'



New Location...
 Drill Deeper.....
 Abandonment.....

NOV - 5 1962

Company Leonard Hart
 Address 702-2nd. St., St. Marys, W. Va
 Farm Friend Wagner Hrs.
 Tract _____ Acres 120 Lease No. _____
 Well (Farm) No. 6 & 12 Serial No. _____
 Elevation (Spirit Level) #6=917.54 #12=681.70
 Quadrangle St. Marys
 County Pleasants District Union
 Engineer H. S. Johnston
 Engineer's Registration No. 2492
 File No. _____ Drawing No. _____
 Date Oct. 1, 1962 Scale 1"=500'

STATE OF WEST VIRGINIA
 DEPARTMENT OF MINES
 OIL AND GAS DIVISION
 CHARLESTON

WELL LOCATION MAP
 FILE NO. PLEAS-1033-#6
PLEAS-1035-#12

+ Denotes location of well on United States Topographic Maps, scale 1 to 62,500, latitude and longitude lines being represented by border lines as shown.
 - Denotes one inch spaces on border line of original tracing.

FRIEND WAGNER HRS NOS 6 & 12 - LEONARD HART - PLEAS-1033-A - 1-1035-A