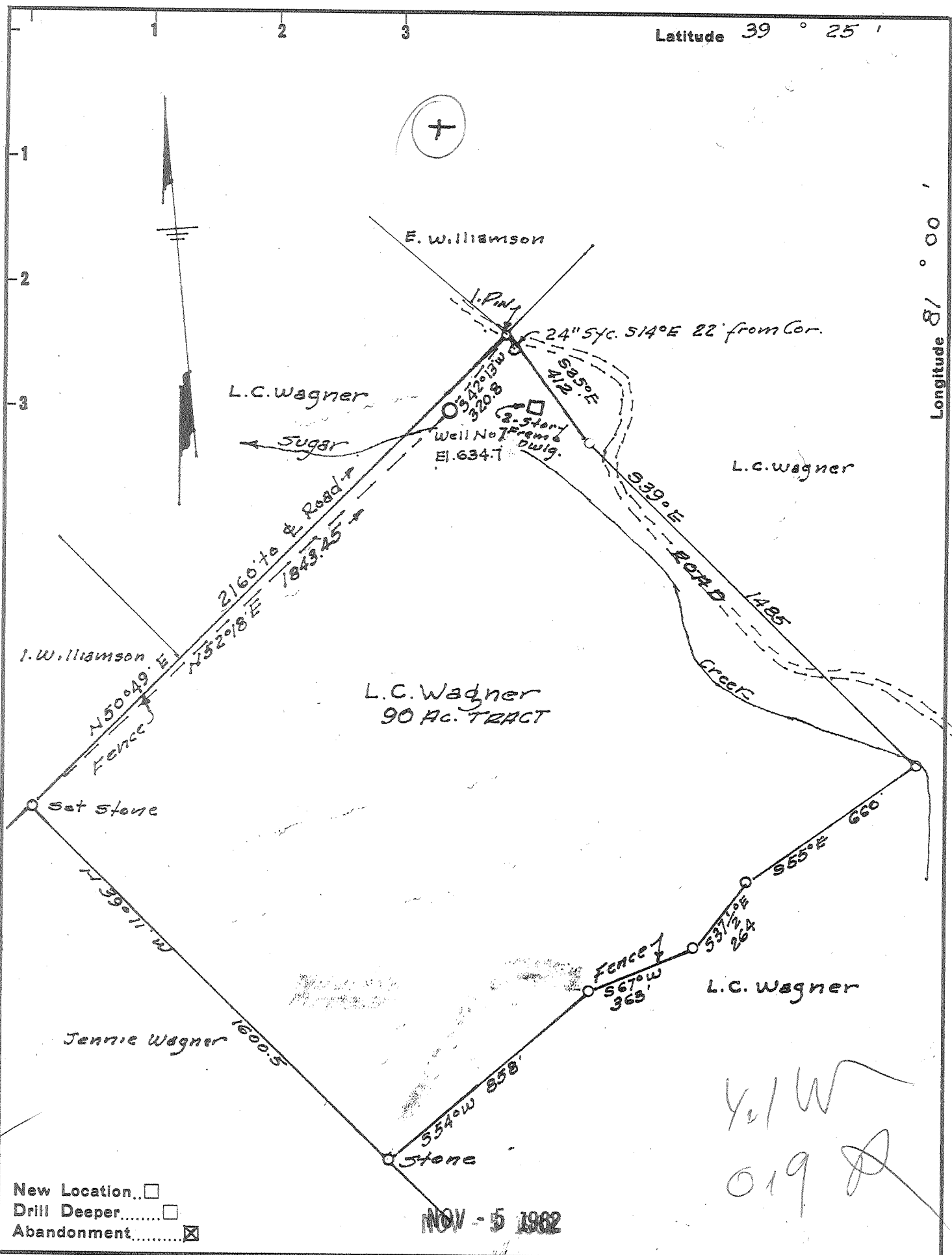


Latitude 39 ° 25 '

Longitude 81 ° 00 '



- New Location...
- Drill Deeper.....
- Abandonment.....

NOV - 5 1962

Y/W
019

Company LEONARD HART
 Address 702-2ND St. St. Marys, W. Va.
 Farm L.C. Wagner
 Tract _____ Acres 90 Lease No. _____
 Well (Farm) No. 7 Serial No. _____
 Elevation (Spirit Level) 634.7
 Quadrangle St. Marys
 County Pleasants District Union
 Engineer H. F. Johnston
 Engineer's Registration No. 2492
 File No. _____ Drawing No. _____
 Date Oct 5, 1962 Scale 1" = 400'

STATE OF WEST VIRGINIA
 DEPARTMENT OF MINES
 OIL AND GAS DIVISION
 CHARLESTON

WELL LOCATION MAP
 FILE NO. PLEAS-1040-A

+ Denotes location of well on United States Topographic Maps, scale 1 to 62,500, latitude and longitude lines being represented by border lines as shown.

- Denotes one inch spaces on border line of original tracing.

L. C. WAGNER no. 7

LEONARD HART

PLEAS-1040-A