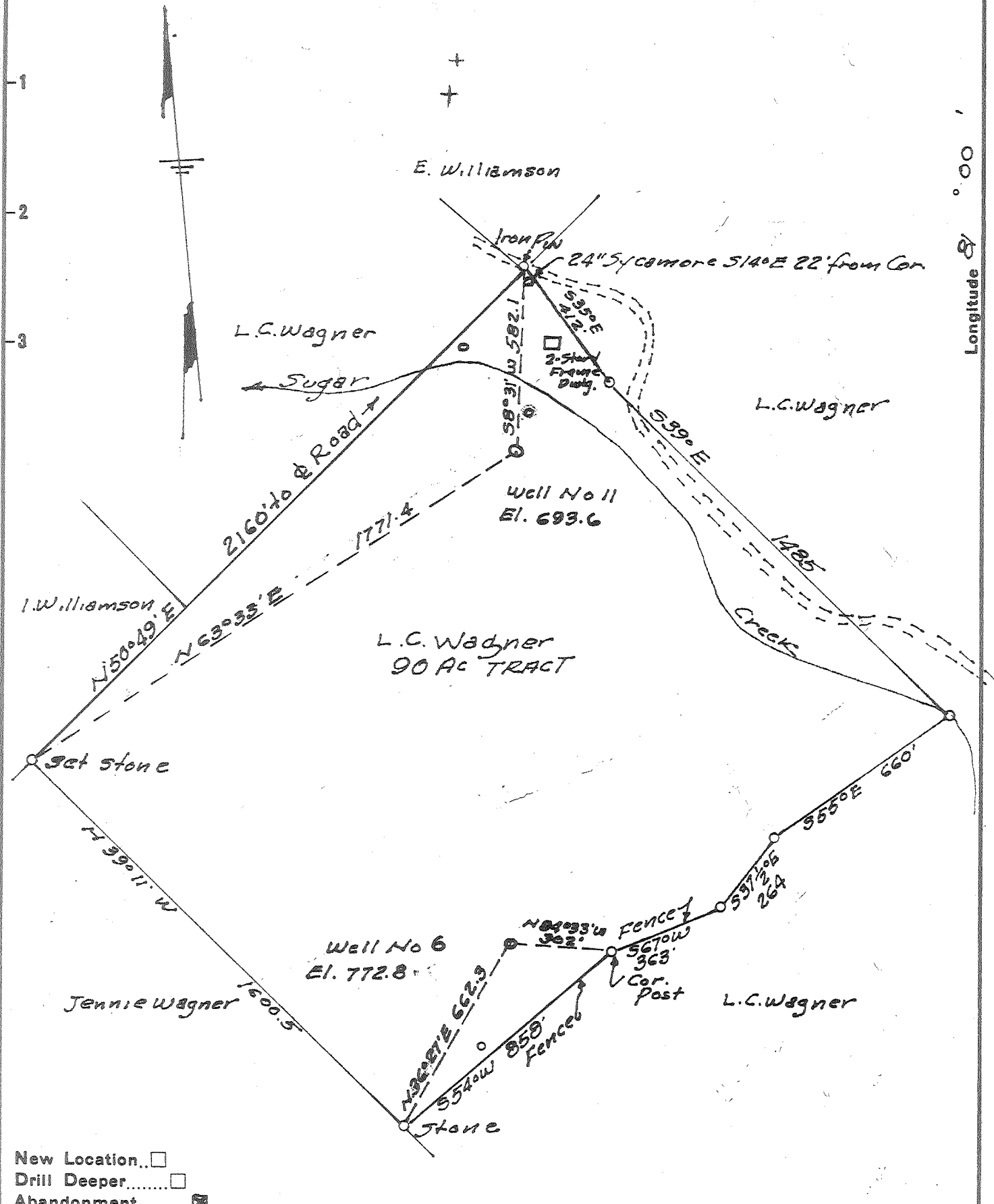


Latitude 39° 25'

Longitude 81° 00'



New Location..
 Drill Deeper.....
 Abandonment.....

Company LEONARD HART
 Address 702-2ND ST. St. Marys W.Va.
 Farm L.G. Wagner
 Tract _____ Acres 90 Lease No. _____
 Well (Farm) No. 6 & 11 Serial No. _____
 Elevation (Spirit Level) No 6 - 772.8 No 11 - 693.6
 Quadrangle St. Marys
 County Pleasants District Lafayette
 Engineer H. L. Johnston
 Engineer's Registration No. 2492
 File No. _____ Drawing No. _____
 Date Oct 5, 1962 Scale 1"=400'

STATE OF WEST VIRGINIA
 DEPARTMENT OF MINES
 OIL AND GAS DIVISION
 CHARLESTON

WELL LOCATION MAP
 FILE NO. PLEAS-1039-A-#6
PLEAS-1042-A-#11

+ Denotes location of well on United States Topographic Maps, scale 1 to 62,500, latitude and longitude lines being represented by border lines as shown.
 - Denotes one inch spaces on border line of original tracing.