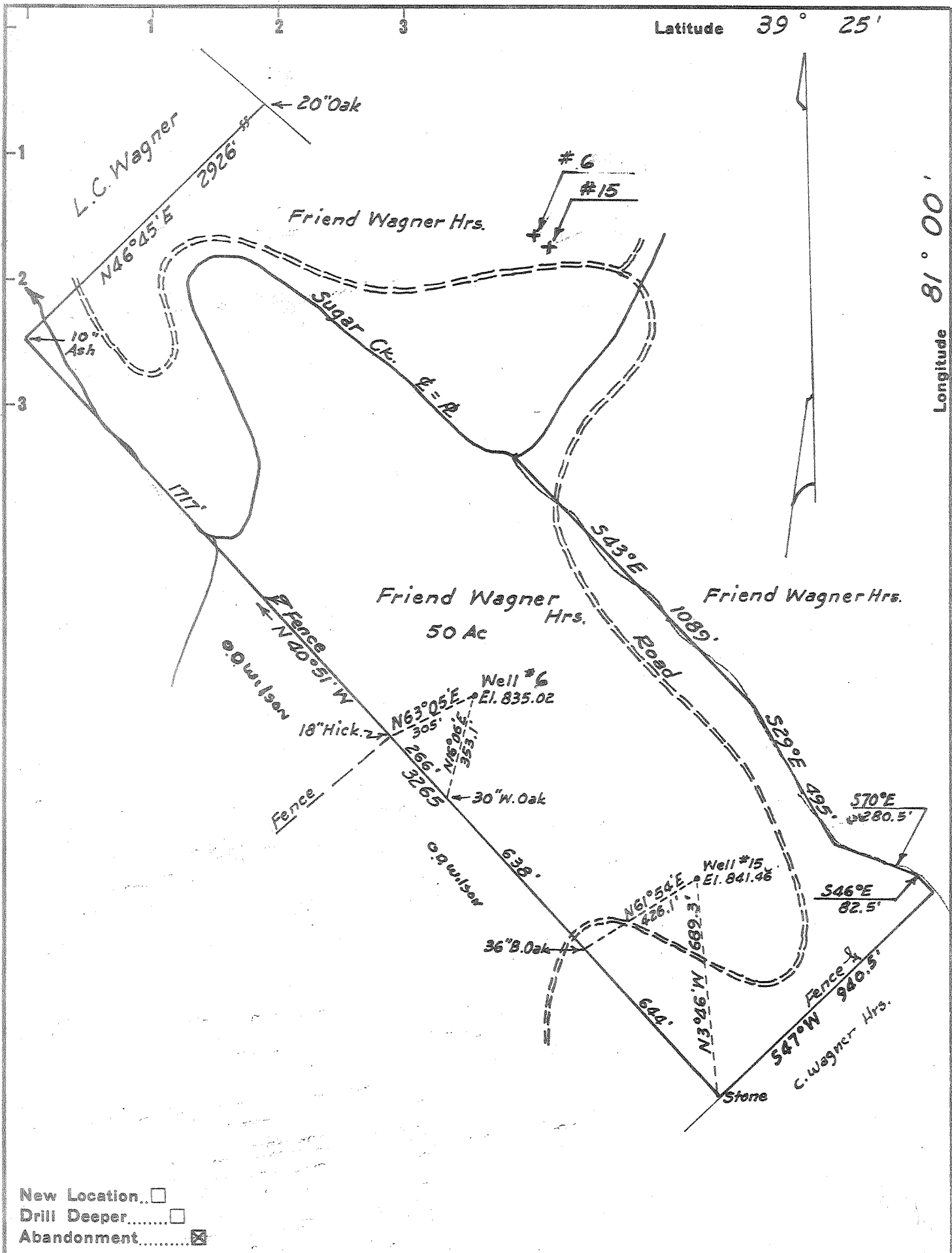


Latitude 39° 25'

Longitude 81° 00'



Company Leonard Hart  
 Address 702-2nd Street, St. Marys, W. Va.  
 Farm Friend Wagner Hrs  
 Tract \_\_\_\_\_ Acres 50 Lease No. \_\_\_\_\_  
 Well (Farm) No. 15 & Unknown Serial No. \_\_\_\_\_  
 Elevation (Spirit Level) 8 = 835  
 Quadrangle St. Marys  
 County Pleasants District Lafayette  
 Engineer H. F. Johnston  
 Engineer's Registration No. 2492  
 File No. \_\_\_\_\_ Drawing No. \_\_\_\_\_  
 Date Oct. 26, 1962 Scale 1" = 400'

STATE OF WEST VIRGINIA  
 DEPARTMENT OF MINES  
 OIL AND GAS DIVISION  
 CHARLESTON

WELL LOCATION MAP  
 FILE NO. PLEAS-1048-A-#10  
PLEAS-1050-A-#6

+ Denotes location of well on United States Topographic Maps, scale 1 to 62,500, latitude and longitude lines being represented by border lines as shown.

- Denotes one inch spaces on border line of original tracing.