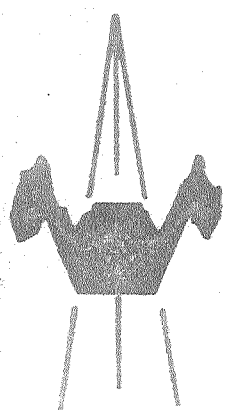
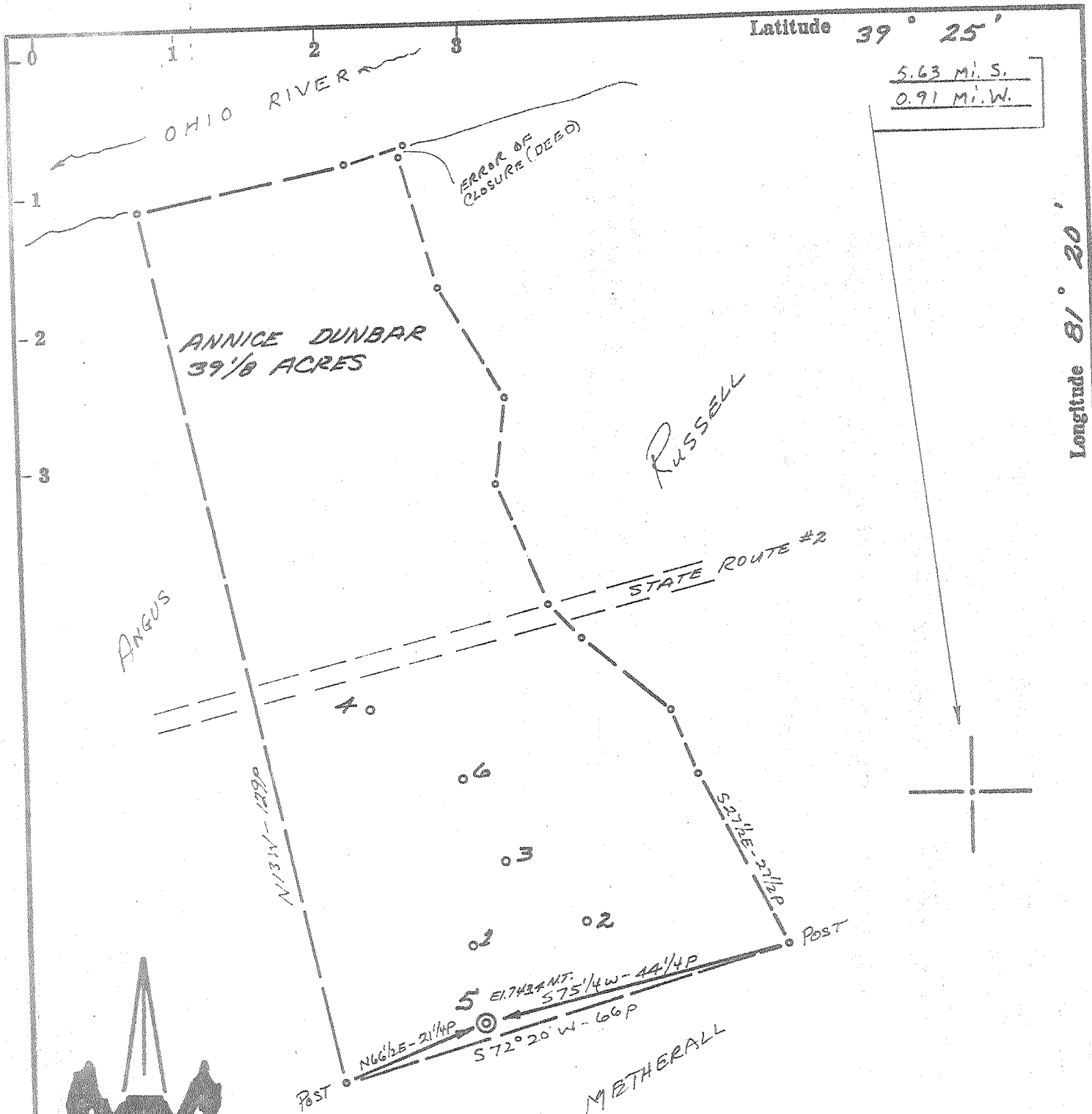


Latitude 39° 25'

5.63 Mi. S.
0.91 Mi. W.



ACCURACY: 1/2" = 200'
E.L. 1/2" = MILE

Source of Elevation ROAD INTERSECTION (643')

I, the undersigned, hereby certify that this map is correct to the best of my knowledge and belief and shows all the information required by paragraph 6 of the rules and regulations of the oil and gas section of the mining laws of West Virginia.

- New Location
- Drill Deeper
- Abandonment *Issue 5-27-70*
- Fracture
- Redrill

Chet Waterman

Company CABOT CORPORATION
 Address WAVERLY, W.V.A.
 Farm ANNICE DUNBAR
 Tract _____ Acres 39 1/8 Lease No. _____
 Well (Farm) No. 5 Serial No. _____
 Elevation (Spirit Level) 743.4' N.T.
 Quadrangle MARIETTA
 County PLEASANTS District GRANT
 Engineer CHET WATERMAN
 Engineer's Registration No. 3788
 File No. 69003-263 Drawing No. _____
 Date 7/5/69 Scale 1" = 200'

STATE OF WEST VIRGINIA
 DEPARTMENT OF MINES
 OIL AND GAS DIVISION
 CHARLESTON

WELL LOCATION MAP
 FILE NO. PLEAS-1091 (A)

+ Denotes location of well on United States Topographic Maps, scale 1 to 62,500, latitude and longitude lines being represented by border lines as shown.

— Denotes one inch spaces on border line of original tracing.