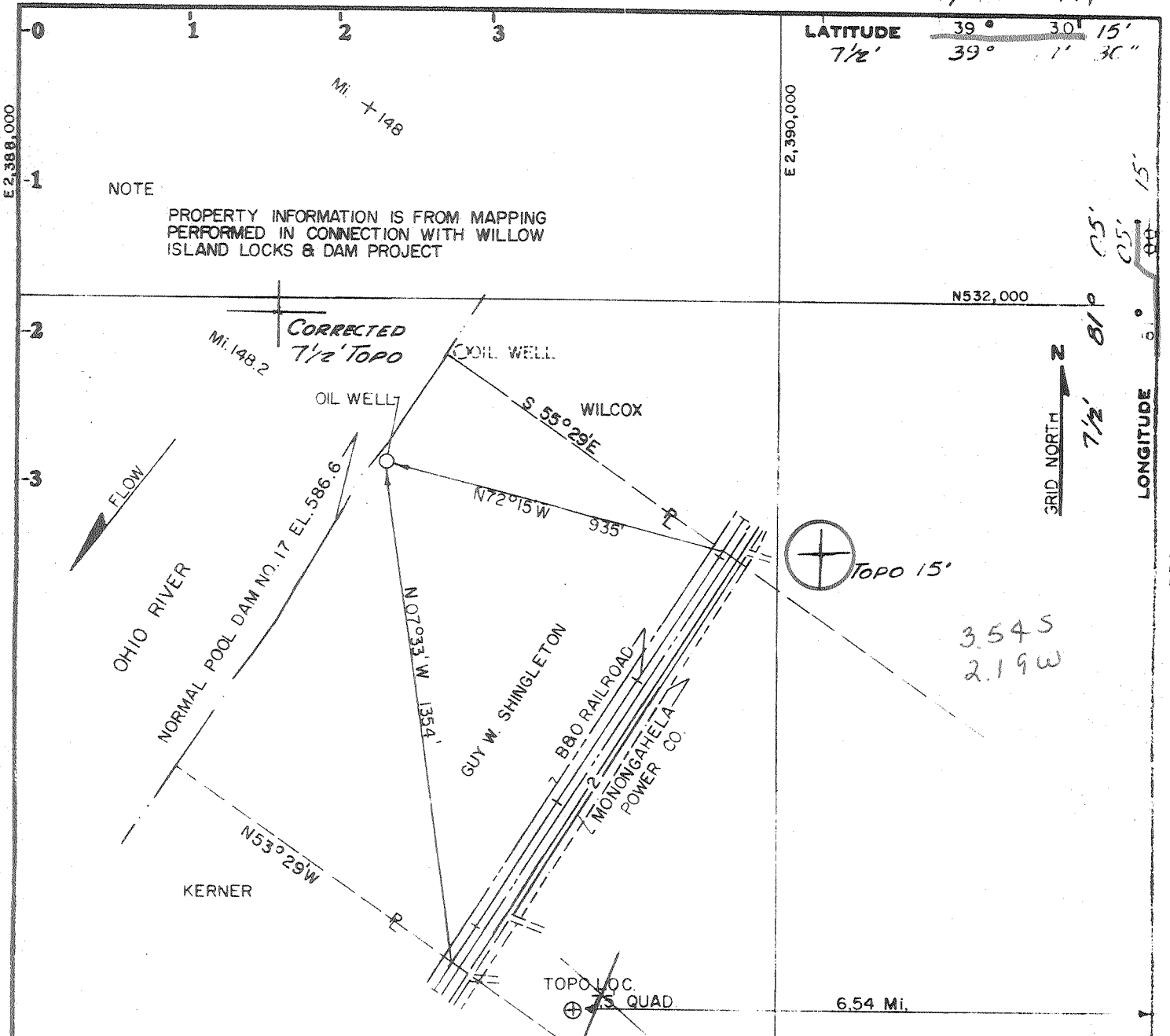


7,171 A



WELL LOCATION LAT. 39° 27' 04" LONG. 81° 07' 20"

THIS MAP IS DRAWN ON THE OHIO STATE PLANE COORDINATE SYSTEM SOUTH ZONE, WELL LOCATION N. 531,560 E. 2,388,970

SHINGLETON PROPERTY DB. 91 Pg. 199

Minimum Error of Closure \_\_\_\_\_

Source of Elevation OHIO RIVER DATUM 1913

BENS RUN QUADRANGLE

I, the undersigned, hereby certify that this map is correct to the best of my knowledge and belief and shows all the information required by paragraph 6 of the rules and regulations of the oil and gas section of the mining laws of West Virginia.

WILLIAM F. WOODBURN  
Signed: U.S. CORPS OF ENGINEERS  
Squares: N S E W

- Fracture
- New Location
- Drill Deeper
- Abandonment  ISSUED 6/30/75 Map No.

Company JON E. WHITE DBA ALAN STONE CO. INC  
 Address RTE 3 ST. MARYS W.V. 26170  
 Farm GUY W. SHINGLETON  
 Tract 1718 E Acres 78.50 ± Lease No. \_\_\_\_\_  
 Well (Farm) No. \_\_\_\_\_ Serial No. \_\_\_\_\_  
 Elevation (Spirit Level) GROUND 596.0 *NC*  
 Quadrangle BENS RUN W.VA. - OHIO *St. Marys 15'*  
 County PLEASANTS District UNION  
 P.E. WILLIAM F. WOODBURN  
 Surveyor U.S. CORPS OF ENGINEERS  
 P.E. Surveyor's Registration No. 5404  
 File No. \_\_\_\_\_ Drawing No. \_\_\_\_\_  
 Date JUNE 1975 Scale 1" = 400'

STATE OF WEST VIRGINIA  
DEPARTMENT OF MINES  
OIL AND GAS DIVISION  
CHARLESTON

WELL LOCATION MAP  
FILE NO. PLEAS-1109-A

+ Denotes location of well on United States Topographic Maps, scale 1 to 24,000, latitude and longitude lines being represented by border lines as shown.

— Denotes one inch spaces on border line of original tracing. **47-073**