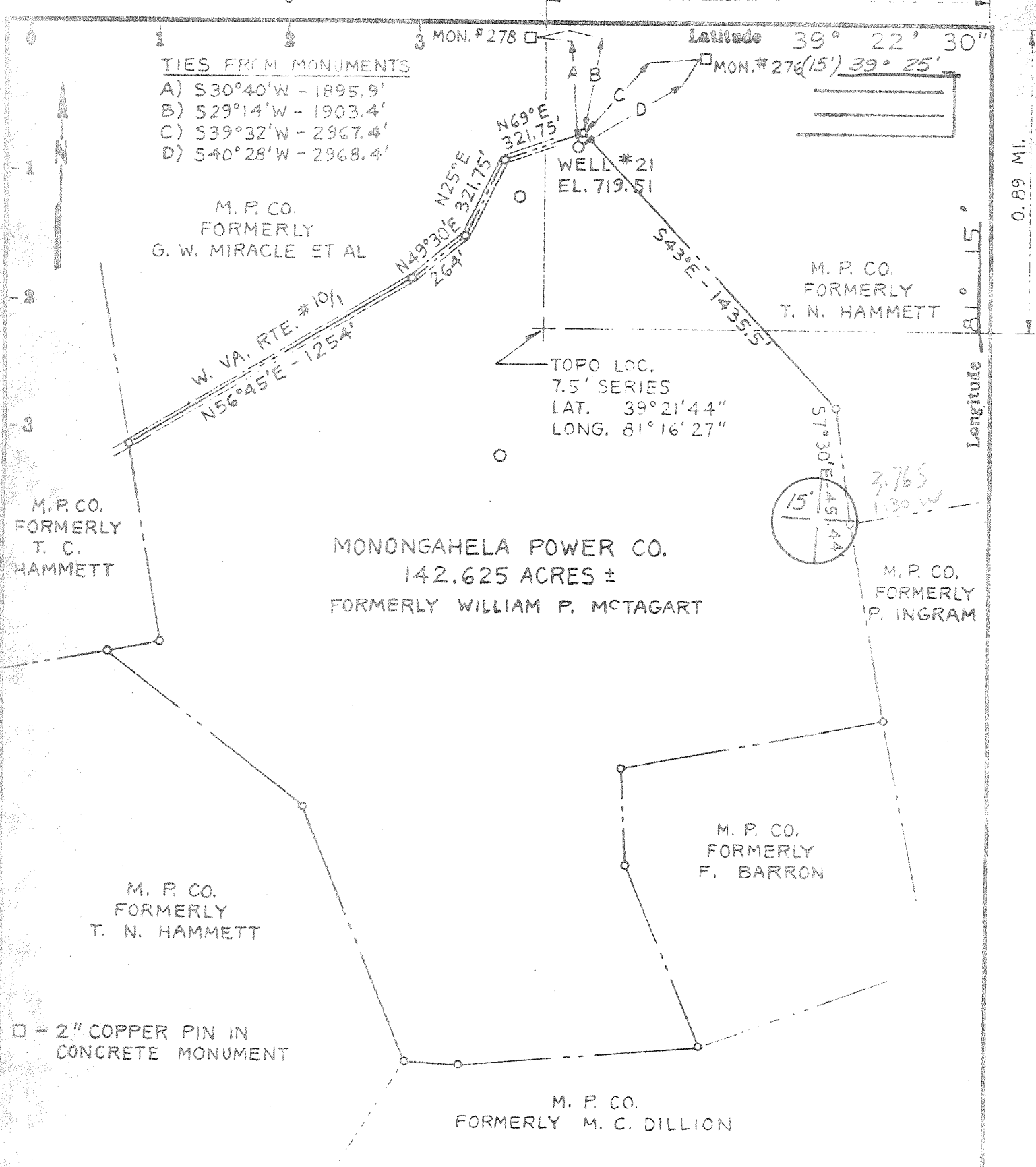


1.29 MI.



TIES FROM MONUMENTS
 A) S30°40'W - 1895.9'
 B) S29°14'W - 1903.4'
 C) S39°32'W - 2967.4'
 D) S40°28'W - 2968.4'

M. P. CO.
 FORMERLY
 G. W. MIRACLE ET AL

M. P. CO.
 FORMERLY
 T. N. HAMMETT

M. P. CO.
 FORMERLY
 T. C. HAMMETT

MONONGAHELA POWER CO.
 142.625 ACRES ±
 FORMERLY WILLIAM P. MCTAGART

M. P. CO.
 FORMERLY
 P. INGRAM

M. P. CO.
 FORMERLY
 T. N. HAMMETT

M. P. CO.
 FORMERLY
 F. BARRON

M. P. CO.
 FORMERLY M. C. DILLION

□ - 2" COPPER PIN IN CONCRETE MONUMENT

- Fracture...
- Redrill...
- New Location
- Drill Deeper
- Abandonment 12/8/77

Source of Elevation U.S.G.S. B.M. #B132 1957; FL. 634.41

I, the undersigned, hereby certify that this map is correct to the best of my knowledge and belief and shows all the information required by paragraph 6 of the rules and regulations of the oil and gas section of the mining laws of West Virginia.

Minimum accuracy, one part in 500'

Company MONONGAHELA POWER COMPANY
 Address 1310 Fairmont Ave., Fairmont, W. Va.
 Farm M.P.CO. (formerly William P. McTagart)
 Tract Acres 142.625 Lease No. _____
 Well (Farm) No. 2-1 Serial No. _____
 Elevation (Spirit Level) 719.51 EC
 Quadrangle Willow Island, W. Va. - Ohio, MARIETTA 15'
 County Pleasants District Grant
 Surveyor or Engineer _____
 Surveyor's or Engineer's Registration No. W. Va. L.L.S. #32
 File No. _____ Drawing No. _____
 Date _____ Scale 1"=500'

STATE OF WEST VIRGINIA
 DEPARTMENT OF MINES
 OIL AND GAS DIVISION
 CHARLESTON

WELL LOCATION MAP
 FILE NO. PLEAS-1121-A

+ Denotes location of well on United States Topographic Maps, scale 1 to 25,000, latitude and longitude lines being represented by border lines as shown.
 - Denotes one inch spaces on border line of original tracing.

47-073 DEC 23 1977