

Revised: 10-20-97

NOTES: This Map Is For Well Location Only & Does Not Represent A Complete Property Survey. No Dwellings Or Surface Coal Operations Within 2000'.

REF: FB 2647 PG 45-48

REF: INV 4276/604

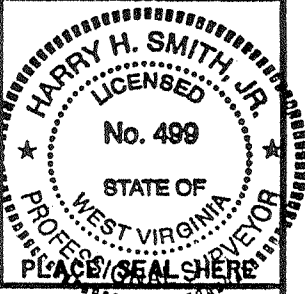
GPS Differential Survey

(+) DENOTES LOCATION OF WELL ON UNITED STATES TOPOGRAPHIC MAPS (7 1/2")

FILE NO. _____
 DRAWING NO. 7475
 SCALE 1" = 2000'
 MINIMUM DEGREE OF ACCURACY 1/200
 PROVEN SOURCE OF ELEVATION BM Nail In Base Of An 18" Maple 84' SE Of Well X-77-7469; Elev 3279.55

I THE UNDERSIGNED, HEREBY CERTIFY THAT THIS PLAT IS CORRECT TO THE BEST OF MY KNOWLEDGE AND BELIEF AND SHOWS ALL THE INFORMATION REQUIRED BY LAW AND THE REGULATIONS ISSUED AND PRESCRIBED BY THE DEPARTMENT OF ENERGY.

(SIGNED) Harry H. Smith, Jr.
 R.P.E. _____ L.L.S. 499



WEST VIRGINIA
 DIVISION OF ENVIRONMENTAL PROTECTION
 OFFICE OF OIL AND GAS
 #10 McJUNKIN ROAD
 NITRO, WEST VIRGINIA 25143-2506

DATE August 28, 1997
 OPERATOR'S WELL NO. 7475
 API WELL NO. 47 075 00035

WELL TYPE: OIL GAS LIQUID INJECTION WASTE DISPOSAL
 (IF "GAS,") PRODUCTION STORAGE DEEP SHALLOW
 STATE COUNTY PERMIT

LOCATION: ELEVATION 3450.06' WATER SHED Iron Bridge Run Of West Fork Of Greenbrier River
 DISTRICT Greenbank COUNTY Pocahontas
 QUADRANGLE Wildell, WV COORDINATES LAT: 38°38'54" LONG: 79°46'13"

SURFACE OWNER United States of America Dept of Interior ACREAGE 1852.00 ±
 OIL & GAS ROYALTY OWNER USA Dept of Interior LEASE ACREAGE 48,212.33
 COAL OWNER Same LEASE NO. 90700

PROPOSED WORK: DRILL CONVERT DRILL DEEPER REDRILL FRACTURE OR STIMULATE PLUG OFF OLD FORMATION PERFORATE NEW FORMATION OTHER PHYSICAL CHANGE IN WELL (SPECIFY) Storage Recondition

PLUG AND ABANDON CLEAN OUT AND REPLUG

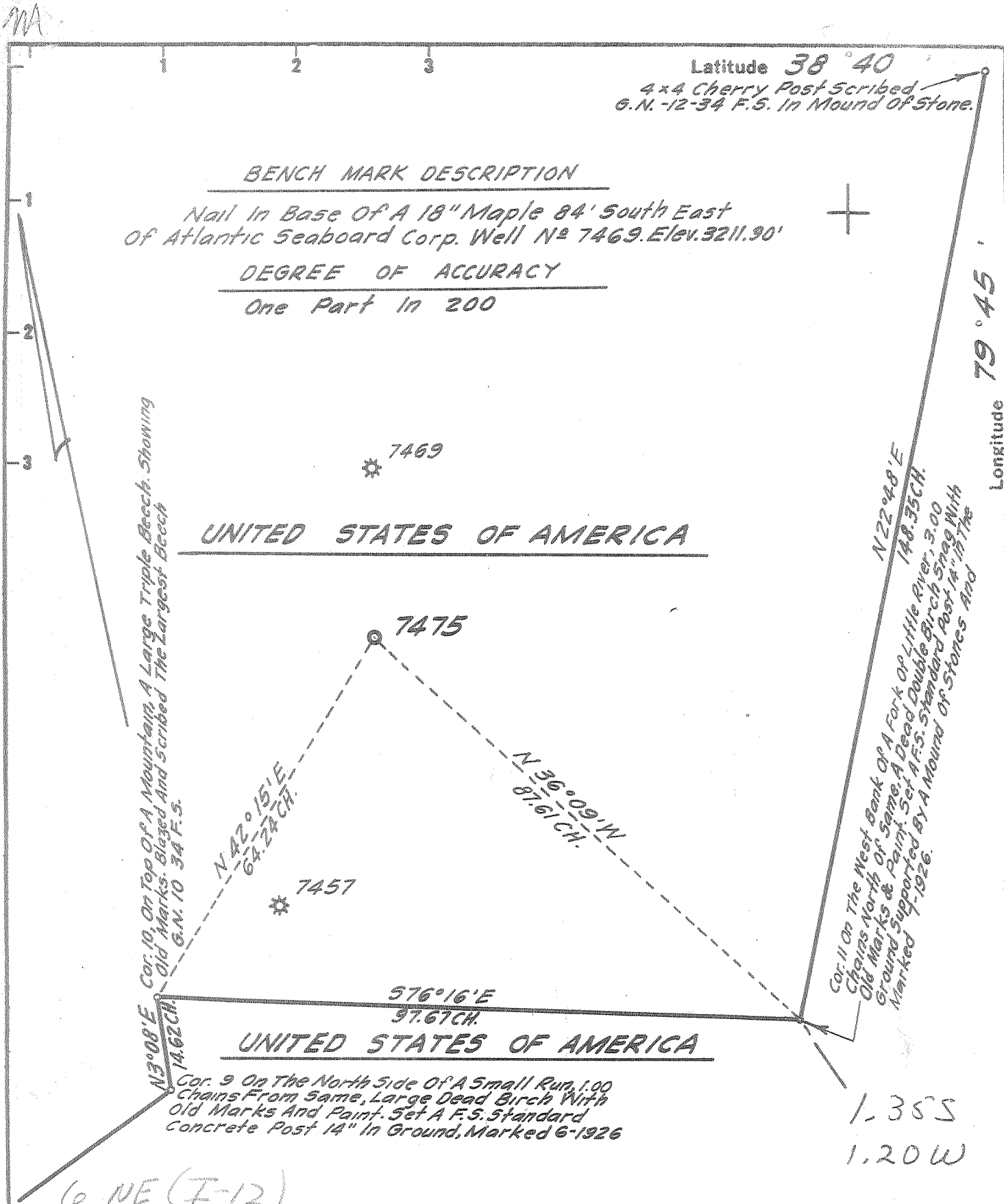
TARGET FORMATION _____ ESTIMATED DEPTH _____

WELL OPERATOR COLUMBIA GAS TRANSMISSION CORP DESIGNATED AGENT RICHARD L COTY
 ADDRESS PO Box 1273, Charleston, WV ADDRESS PO BOX 1273, CHARLESTON, WV
25325-1273 25325-1273

POCAHONTAS COUNTY NAME PERMIT 35 T

DEEP WELL

MAY 22 1999



Fracture Before 6/5/27

New Location

Drill Deeper

Redrill

Abandonment

I, the undersigned, hereby certify that this map is correct to the best of my knowledge and belief and shows all the information required by Paragraph 5 of the Rules and Regulations of the Oil and Gas Section of the Mining Laws of West Virginia.

The accuracy of this survey is within the limits and as prescribed in paragraph 5 by the Oil and Gas Division of the Department of Mines Regulations.

PROVEN ELEVATION 3211.90'

Company ATLANTIC SEABOARD CORP.

Address CHARLESTON, W. VA.

Farm UNITED STATES OF AMERICA

Tract 34 Acres 1852 BLMA-022926 Lease No. AS-700-

Well (Farm) No. _____ Serial No. X-7475

Elevation (Spirit Level) 3450.06'

Quadrangle DURBIN-EC

County POCAMONTAS District GREEN BANK

Engineer Jaybert R. Ferrell

Engineer's Registration No. 2529

File No. 162-79 Drawing No. _____

Date MARCH 16, '66 Scale 1" = 1320'

STATE OF WEST VIRGINIA
 DEPARTMENT OF MINES
 OIL AND GAS DIVISION
 CHARLESTON

WELL LOCATION MAP
 FILE NO. POC-35

+ Denotes location of well on United States Topographic Maps, scale 1 to 62,500 latitude and longitude lines being represented by border lines as shown.

- Denotes one inch spaces on border line of original tracing.

9-0 261

Deep Well

ORISKANY STORAGE
 T.D. = Helderberg



STATE OF WEST VIRGINIA
DEPARTMENT OF MINES
OIL AND GAS DIVISION

Rotary
Spudder
Cable Tools
Storage

Quadrangle Durbin
Permit No. POC-35

WELL RECORD

Oil or Gas Well Gas Storage
(KIND)

Company Atlantic Seaboard Corporation
Address P.O. Box 1273 Charleston, W. Va. 25325
Farm U.S. of America Acres
Location (waters) Mill Run of West Fork
Well No. X-77-7475 Elev. 3450.06'
District Green Bank County Pocahontas
The surface of tract is owned in fee by
Address
Mineral rights are owned by U. S. Geological Survey
Gen. Services Bldg. Address Washington, D.C.
Drilling commenced 5-13-66
Drilling completed 6-4-66
Date Shot From To
With

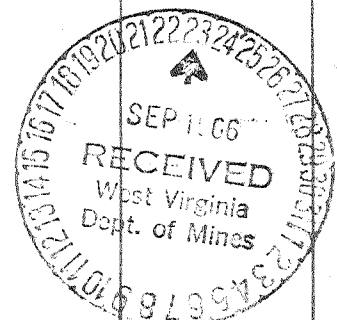
Casing and Tubing	Used in Drilling	Left in Well	Packers
Size			Kind of Packer
16			
13 3/8		37' Cemented	
10			Size of
9-5/8"		1262' Cemented	
7"		6020' Cemented	Depth set
5 3/16			
4 1/2			
3			Perf. top
2 3/8		6206'	Perf. bottom
Liners Used			Perf. top
			Perf. bottom

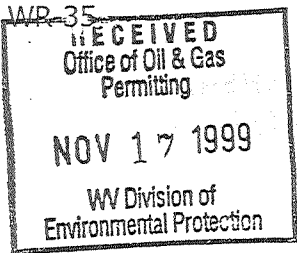
Open Flow /10ths Water in Inch
 /10ths Merc. in Inch
Volume 6,730,000 - Oriskany Cu. Ft.
Rock Pressure 1400 lbs. hrs.
Oil bbla., 1st 24 hrs.
WELL ACIDIZED (DETAILS)
WELL FRACTURED (DETAILS)

Attach copy of cementing record.
CASING CEMENTED SIZE No. Ft. Date
Amount of cement used (bags)
Name of Service Co.
COAL WAS ENCOUNTERED AT FEET INCHES
 FEET INCHES FEET INCHES
 FEET INCHES FEET INCHES

RESULT AFTER TREATMENT (Initial open Flow or bbls.)
ROCK PRESSURE AFTER TREATMENT HOURS
Fresh Water 364 Feet (1272)' Salt Water Feet
Producing Sand Depth

Formation	Color	Hard or Soft	Top	Bottom	Oil, Gas or Water	Depth	Remarks
Soil			0	30	Water	364'	
Shale			30	340	Water	(1272) ?	
Sand			340	985			
Shale			985	1554			Hole wet at 1272' dried up-dusted to T.I
Sand			1554	2357			
Shale			2357	3075			Test before acidized - 1,000 M
Sand			3075	3750			Acidized -6-10-66 with 20,000 gallons
Shale			3750	5485			15% Hcl acid, overflushed with 4,000
Tully Lime			5485	5510			gallons water, 219,758 std. cu.ft.
Marcellus Shale			5510	5820			nitrogen injected at rate of 300 std.
Onondaga Lime			5820	5862			cu.ft. per bbl.
Chert			5862	5970			Test after acidized 6# Spring gauge
Needmore Spale			5970	6012			thru 4" 6,730 M
Oriskany Sand			6012	6205			
Helderberg			6205	6214			
Total Depth			6214'				Shut in 6-12-66
			5820	6012			
			3450	3450			
			2370	2562			
				6205			
				3450			
				2755			





18-May-99
API # 47- 075-00035-T

Reviewed

State of West Virginia
Division of Environmental Protection
Section of Oil and Gas

Well Operator's Report of Well Work

Farm name: US FOREST SERVICE Operator Well No.: GLADY #7475

LOCATION: Elevation: 3,450.00 Quadrangle: WILDELL

District: GREENBANK County: POCAHONTAS
Latitude: 6700 Feet South of 38 Deg. 40 Min. 0 Sec.
Longitude: 5850 Feet West of 79 Deg. 45 Min. 0 Sec.

Company: COLUMBIA GAS TRANSMISSION
P.O. BOX 1273
CHARLESTON, WV 25325-1273

Agent: RICHARD L. COTY
Inspector: CRAIG DUCKWORTH
Permit Issued: 05/21/99
Well work Commenced: 06-23-99
Well work Completed: 07-27-99
Verbal Plugging
Permission granted on: _____
Rotary _____ Cable _____ Rig
Total Depth (feet) 6,214'KB (cleaned out to 6,202'GL)
Fresh water depths (ft) See Original Records

Salt water depths (ft) See Previous

Is coal being mined in area (Y/N) ? N
Coal Depths (ft) : See Previous

Casing & Up Tubing Size	Used in Drilling	Left in Well	Cement Fill Cu. Ft.
CLEANED OUT WELL STIMULATION; SEE BACK FOR DETAILS			

OPEN FLOW DATA
Producing formation Oriskany Pay zone depth (ft) 6,012' - 6,205'
Gas : Initial open flow _____ MCF/d Oil : Initial open flow _____ Bbl/d
Final open flow _____ MCF/d Final open flow _____ Bbl/d
Time of open flow between initial and final tests _____ Hours
Static rock Pressure _____ psig (surface pressure) after _____ Hours
Second producing formation _____ Pay zone depth (ft) _____
Gas : Initial open flow _____ MCF/d Oil : Initial open flow _____ Bbl/d
Final open flow _____ MCF/d Final open flow _____ Bbl/d
Time of open flow between initial and final tests _____ Hours
Static rock Pressure _____ psig (surface pressure) after _____ Hours

NOTE: ON BACK OF THIS FORM PUT THE FOLLOWING: 1). DETAILS OF PERFORATED INTERVALS, FRACTURING OR STIMULATING, PHYSICAL CHANGE, ETC. 2). THE WELL LOG WHICH IS A SYSTEMATIC DETAILED GEOLOGICAL RECORD OF ALL FORMATIONS, INCLUDING COAL ENCOUNTERED BY THE WELLBORE.

For : COLUMBIA GAS TRANSMISSION CORP.

By : W.H. Fraker
Date : 11/16/99

NOV 23 1999

POCA 0035-7

WR-35

18-May-99

API # 47- 075-00035-T

State of West Virginia
Division of Environmental Protection
Section of Oil and Gas

Well Operator's Report of Well Work

STIMULATION

- (07/27/99) Acidized by Halliburton Energy Services
- Pre-flush 3,990 gals 15% Halliburton 75 Quality FE Foamed Acid
- Displaced with 9,366 gals 75 Quality Foamed water.
- Treated w/ 7,980 gals 20% FE 65 Quality Foamed Acid
- Followed w/ 7,980 gals 15% FE 65 Quality Foamed Acid
- Flushed w/ 13,986 gals 65 Quality Foam & 630 gals water.
- Additives: 56 gals FE-1A; 18 GALS HAI-81; 33 gals HC2; 6 gals SCA-130; 5 gals FE-5A; 30 lbs. BA-2; 6 gals PEN 88M.
- Total acid 3,822 gals 28% FE Acid.
- Total nitrogen 687,000 scf.
- The waste fluids were hauled to LAD in Wheeling, WV for disposal.