

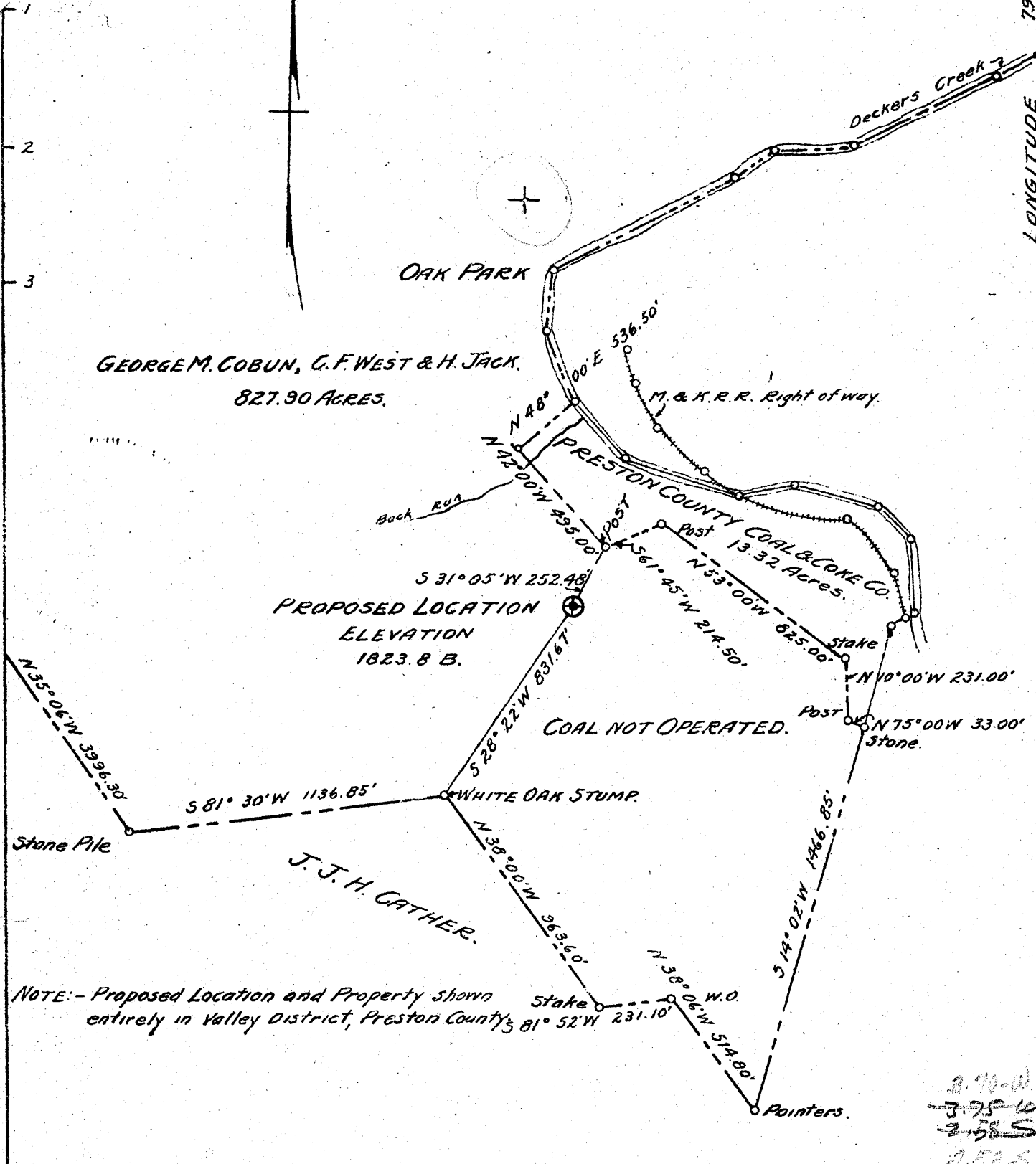
turn to W. by

LATITUDE 39° 35'

LONGITUDE 79° 45'

1 2 3

N



NOTE: - Proposed Location and Property shown entirely in Valley District, Preston County's 81° 52' W 231.10'

2.70-W
3.75-W
2.52-S
2.53-S

Company M. E. DAVIS
 Address 323 FOURTH AVE., PITTSBURGH, PA.
 Farm GEORGE M. COBUN, C. F. WEST & H. JACK.
 Tract ONE Acres 827.90 Lease No. 1
 Well (Farm No.) ONE Serial No. _____
 Quadrangle MORGANTOWN - SE
 County ~~MORGANTOWN~~ PRESTON
 District ~~MORGANTOWN~~ VALLEY
 Engineer *Carl H. Jones*
 Engineer's Registration No. 380
 File No. 2-19D-141 Drawing No. 5310
 Date MAY 1ST 1941 Scale 1" = 500'

STATE OF WEST VIRGINIA
 DEPARTMENT OF MINES
 OIL AND GAS DIVISION
 CHARLESTON

WELL LOCATION MAP
 FILE NO. PRESTON-1

+ Denotes location of well on United States Topographic Maps scale 1" to 62,500 Latitude and Longitude being represented by border lines as shown.

- Denotes one inch spaces on border map or original tracing.

1-0

5310.
2-19D-141.

WEST VIRGINIA DEPARTMENT OF MINES
OIL & GAS DIVISION
WELL RECORD

Permit No. Pres-1	M.E. Davis	Dry Hole		
Company	1511 Benedum-Trees Bldg., Pgh. Pa.	Casing & Tubing		
Address	George Cobun, et al. Acres 827	13	16	16
Farm	Back Run	10	158	158
Location	1 Elev. 1775	8 1/2	493	493
Well No	Valley Preston County	6 5/8	800	800
District	Geo. Cobun, C.H. West, Harry Jack			
Surface	Morgantown, W. Va.			
Mineral	Same	Packer		
Commenced	June 14, 1941	Midget		
Completed	July 19, 1941	6 5/8 x 18"		
Fresh Water	102' 3 blrs.;	Depth 800'		
		Coal 201'		

Drift	Y	S	0	30	<i>Allegheeny</i>
Sand	Gr	H	30	55	
Slate	Dk	S	55	75	
Slate	Dk	S	75	100	
Lime	Dk	H	100	145	
Sand	Lt	H	145	158	
Slate	Dk	S	158	183	
Sl. & Coal	Dk	S	183	214	Coal 201' - 207' Water with coal.
Sl. & Sand	Dk	H	214	226	
Salt Sand	Lt	H	226	418	bottom of salt sand (418)
Slate	Dk	S	418	430	<i>Clarion Coal</i>
Sand	Lt	H	430	492	
Slate	Dk	S	492	497	
Red Rock		S	497	507	
Lime	Lt	H	507	538	
Sand	Dk	H	538	595	
Slate	Dk	S	595	601	
Sand	Lt	H	601	670	
Lime	Lt	H	670	691	
Red Rock		S	691	707	
Lime	Dk	H	707	733	
White Slate		S	733	741	
Red Rock		S	741	755	
Red Rock		S	755	758	
Big Lime	Lt	H	758	920	Lime and Sand broken
Injun Sand	Lt	H	920	1008	No pay of Oil or Gas
Slate & Shells	Dk	S	1008	1084	
Squaw Sand	Dk	H	1084	1203	Broken - No pay of Oil or Gas
Slate	Dk	S	1203	1246	
TOTAL DEPTH				1246	

(This well located 35' below Freeport Coal. Coal not being operated.)

832
*chunk
chunk
493*

755

946

1775
920

7855

Valley District, Preston County, W. Va.

By M. E. David, 324 Fourth Ave., Pittsburgh, Pa.

Located 3.75 mi. W. of 79° 45' and 2.58 mi. S. of 39° 35' - SE - Morgantown
Quadrangle.

Elevation, 1775' L.

Permit Preston-1.

Drilling commenced June 14, 1941; completed, July 19, 1941.

Dry hole.

Located 35 feet below Upper Freeport Coal.

Coal was encountered at 201 to 207'.

Samples from surface to 1246' examined by C. Apsouri.

Adding the estimated interval of 35 feet from the Upper Freeport Coal to the top
of the well to that shown by the samples, the total thickness of the Allegheny
Formation is 267 feet.

Martens' record from samples.

Top. Bottom. Thickness.

ALLEGHENY FORMATION, 232+ FEET

0 -	6	6	Shale, dark-gray to brownish
6 -	12	6	Shale, yellow, silty
12 -	18	6	Shale, gray
18 -	24	6	Siltstone, light-gray, sandy
24 -	30	6	Siltstone, light-gray, 80%; brown shale, 20%
30 -	36	6	Sandstone, white, fine- to medium-grained, 80%; gray shaly siltstone, 15%; coal, 5%
36 -	68	32	Sandstone, white, coarse
68 -	78	10	Shale, gray
78 -	84	6	Shale, light-gray, silty
84 -	90	6	Siltstone, brownish, 80%; gray shale, 20%
90 -	96	6	Sandstone, gray, fine, 80%; gray shale, 20%
96 -	100	4	No sample
100 -	106	6	Siltstone, gray
106 -	112	6	Siltstone, gray, 95%; black shale and coal, 5%
112 -	118	6	Siltstone, brownish
118 -	124	6	No sample
124 -	146	22	Sandstone, white, very fine
146 -	170	24	Sandstone, white, medium-grained; about 10 to 30% of gray sandy siltstone from 152 to 170'
170 -	176	6	Shale, light-gray
176 -	188	12	Siltstone, light-gray, sandy
188 -	194	6	Shale, light-gray
194 -	201	7	Shale, gray, 75%; black shale, 25%
201 -	207	6	Coal (Clarion)
207 -	220	13	Siltstone, brown, very sandy
220 -	226	6	Siltstone, brownish, very sandy, 75%; coal and black shale, 25%
226 -	232	6	Siltstone, brownish, very sandy, 85%; gray shale, 15%
POTTSVILLE FORMATION, 261 FEET			
232 -	250	18	Sandstone, white, very fine, 85%; black shale with trace of coal, 15% (Homewood Sandstone)
250 -	279	29	Siltstone, gray, very sandy
279 -	291	12	Sandstone, white, fine to coarse, 50%; siltstone, gray, very sandy
291 -	418	127	Sandstone, white, medium- to coarse-grained; some thin streaks of shale, siltstone, and finer sandstone (Upper Connoquenessing Sandstone)
418 -	430	12	Siltstone, gray, shaly

(OVER)

GEORGE M. COBUN ET AL. NO. 1 WELL (Continued).

Top.	Bottom.	Thickness.	
430	- 445	15	Sandstone, white to gray, very fine, silty
445	- 451	6	Sandstone, white, medium-grained.
451	- 469	18	Sandstone, white, very coarse
469	- 477	8	Shale, gray, with a little coal
477	- 479	2	No sample
479	- 489	10	Sandstone, white, very coarse
489	- 493	4	Sandstone, white, very fine
MAUCH CHUNK GROUP, 259 FEET			
493	- 498	5	Shale, yellow, soft, 60%; siltstone, green, sandy (?)
498	- 507	9	Shale, red, soft
507	- 538	31	Sandstone, white to greenish, very fine
538	- 600	62	Sandstone, white, medium-grained
600	- 610	10	Sandstone, white, medium-grained, pyritic in upper 5 feet
610	- 615	5	Sandstone, white, medium-grained, 75%; gray, silty shale, 25%
615	- 621	6	Sandstone, white, fine- to medium-grained
621	- 651	30	Sandstone, white to grayish-green, fine to very fine
651	- 663	12	Shale, very light gray, soft
663	- 670	7	No sample
670	- 703	33	Sandstone, white to grayish-green, very fine
703	- 709	6	Shale, red, calcareous
709	- 733	24	Shale, greenish-gray, calcareous
733	- 741	8	Shale, gray, soft, thinly laminated
741	- 755	14	Shale, red, soft, calcareous
GREENERIER LIMESTONE, 191 FEET			
755	- 838	83	Limestone, light gray to light brown and nearly white light gray to light brown and nearly white
838	- 850	12	Limestone, brown to white; also considerable amount of gray and green shale and some quartz sand
850	- 867	17	Limestone, brown to nearly white
867	- 873	6	Limestone, brown, 75%; green and red shale, 20%; white, very fine sandstone, 5%
873	- 879	6	Sandstone, white, very fine
879	- 884	5	Sandstone, white, calcareous, 50%; brown calcareous siltstone, 30%; brown limestone, 20%
884	- 889	5	Limestone, brown, partly sandy, 50%; green calcareous shale, 40%; red shale, etc., 10%
889	- 893	4	Shale, red, 50%; green shale, 25%; nearly white limestone, 25%
893	- 900	7	Shale, red
900	- 915	15	Limestone, nearly white; some sand in lower 10 feet
915	- 946	31	Limestone, nearly white, sandy
POCONO FORMATION, 300+ FEET			
946	- 952	6	Sandstone, white, coarse
952	- 958	6	Siltstone, red, shaly
958	- 965	7	Siltstone, green, sandy
965	- 972	7	Shale, red, silty
972	- 992	20	Sandstone, red, medium- to fine-grained
992	- 1008	16	Siltstone, red and green, sandy
1008	- 1022	14	Siltstone, gray, sandy
1022	- 1034	12	Sandstone, white, medium-grained
1034	- 1060	25	Shale, gray
1060	- 1075	15	Shale, gray, 80%; brown, very fine sandstone with siderite spherulites, 20%
1075	- 1169	94	Sandstone, white, fine, silty, 80%; gray shale, 20%
1169	- 1183	14	Sandstone, white, medium-grained
1183	- 1190	7	Sandstone, white, very fine
1190	- 1208	18	Shale, gray
1208	- 1246	38	Siltstone, gray, shaly and sandy
	1246		Total depth

WEST VIRGINIA DEPARTMENT OF MINES
OIL AND GAS DIVISION
WELL RECORD

(16)

Permit No. Pres - #1

Company: M. E. Davis
Address: 1511 Benedum-Trees Bldg., Pgh. Pa.
Farm: George Cobun, et al Acres: 827
Location (waters) Back run.
Well No. 1 Elev. 1775

Kind of Packer: miget
Size of 6 8/8 " x 18"
Depth set 800' "

District: Valley. County, Preston

Coal encountered at 201'

The surface of tract is owned in bee by George Cobun

C. H. West & Harry Jack, Address: Morgantown, W. Va.

Mineral rights owned by George Cobun, C H. West,

& Harry Jack, Morgantown, W. Va.

Drilling commenced June 14, 1941

Drilling completed July 19, 1941

Date shot: no

This well located 35' below Freeport Coal. Coal not being operated.

Formation	Color	Hard or soft	Top	Bottom	Oil Gas or Water	Depth Found	Remarks
Drift	yellow	soft	0	30'			
Sand	gray	hard	30	35			
Slate	dark	soft	35	75			
"	"	"	75	100	Water	102'	3 bailers
Lime	dark	hard	100	145			
Sand	light	hard	145	158			
Slate	dark	soft	158	183			
Slate & coal	dark	soft	183	214	coal	201' - 207'	water with coal
Slate & sand	dark	hard	214	226			
Salt sand	light	hard	226	418			bottom of Salt sand (418')
Slate	dark	soft	418	430			
Sand	light	hard	430	492			
Slate	dark	soft	492	497			
Red rock	red	soft	497	507			
Lime	light	hard	507	538			
Sand	dark	hard	538	595			
Slate	dark	soft	595	601			
Sand	light	hard	601	670			
Lime	light	hard	670	691			
Red rock	red soft		691	707			
Lime	dark	hard	707	733			
White Salte	light	soft	733	741			
Red rock	red soft		741-	755			
Red rock	red	soft	755	758			
(Big Lime)	light	hard	758	920	Lime and sand		broken
365 (Injun sand)	light	hard	920	1008	No pay of Oil or Gas		
Slate & shells	dark	soft	1008	1084			
Squaw Sand	dark	hard	1084	1203	Broken - No pay or oil or gas		
Slate	dark	soft	1203	1246			
Total depth of well (1246')				1246			

(P. L. Dally, Supt.)

(Completely dry below 800'

See Martens, vol. XVII, 1945, p 477