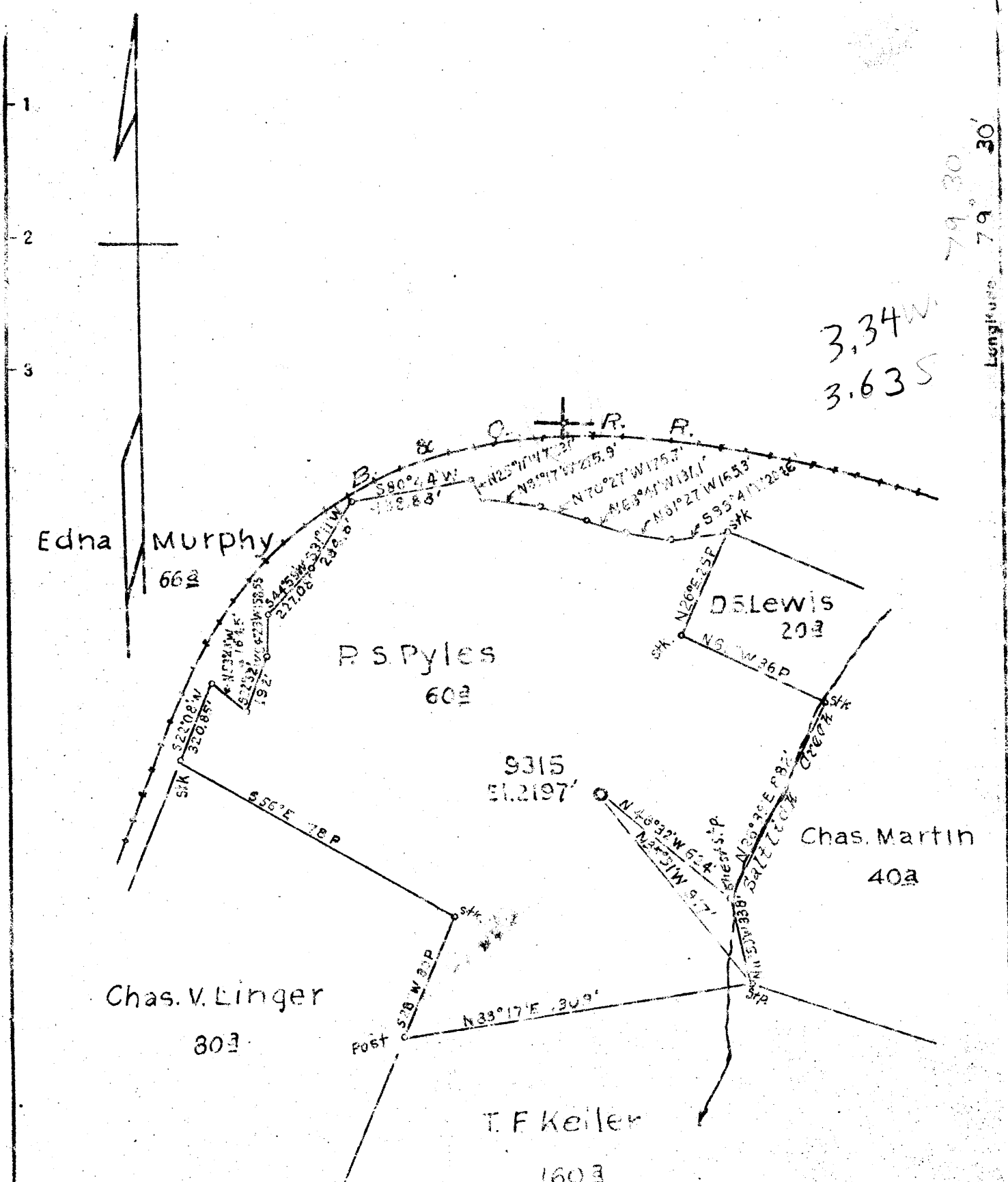


M

P

Latitude 39° 30'



New Location
 Drill Deeper
 Abandonment

F8874 P-25-26-27.

Company Hope Natural Gas Co.
 Address Clarksburg, W. Va.
 Farm R.S. Pyles
 Tract _____ Acres 60 Lease No. 54880
 Well (Farm) No. _____ Serial No. 9315
 Elevation (Spirit Level) 2197
 Quadrangle Ringwood NE
 County Preston District Portland
 Engineer W.M. Powers
 Engineer's Registration No. 900
 File No. _____ Drawing No. _____
 Date 10-19-48 Scale 1" = 30 P

STATE OF WEST VIRGINIA
 DEPARTMENT OF MINES
 OIL AND GAS DIVISION
 CHARLESTON

WELL LOCATION MAP
 FILE NO. Pres-9

+ Denotes location of well on United States Topographic Maps, scale 1 to 62,500, latitude and longitude lines being represented by border lines as shown.

- Denotes one inch spaces on border line of original tracing.

WEST VIRGINIA DEPARTMENT OF MINES
OIL & GAS DIVISION
W E L L R E C O R D

Permit No. Pres 9
Kingwood Quad.

Dry Hole
CASING & TUBING

Company Hope Natural Gas Company
Address 445 West Main St., Clarksburg, W.Va.
Farm P.S.Pyles Acres 60
Location
Well No. 9315 Elev. 2197
District Portland Preston County
Surface
Mineral
Commenced Nov. 18, 1948
Completed May 2, 1949
Date shot 5-3-49 acidized May 18, 1949
Volume 73,000 C.F.
Rock Pressure
Fresh Water 38'; 114'; show water 595'
6062-6067'

	10	502	502
	8 1/2	1512	1512
	6 5/8	5683	5683

Casing cemented:
9" and 7" casing
set in cement.

No coal recorded

Clay	0	16
Slate	16	138
Slate Shell	138	190
Sand	190	249
Slate Shell	249	278
Lime	278	338
Slate Shell	338	690
Lime	690	752
Slate Shell	752	770
Sand	770	788
Slate Shell	788	810
Sand	810	896
Slate Shell	896	912
Dark Sand	912	928
Slate Shell	928	988
Gray Sand	988	1017
Slate Shell	1017	1009
Sand	1109	1124
Lime	1124	1135
Slate Shell	1125	1438
Dark Sand	1438	1452
Slate Shell	1452	1797
Lime	1797	1819
✓ Benson Sand	1819	1900
Slate Shell	1900	2810
Sand	2810	2875
Slate Shell	2875	3698
Shale	3698	3844
Hard Shale	3844	3998
Gray Shale	3998	4260
Brown Shale	4260	4423
Dark Lime	4423	4440
Brown Shale	4440	4719
Limey Shale	4719	4838
Tully Lime	4831	4873
Brown Shale	4873	5164
Limey Shale	5164	5198
Shale	5198	5248
Limey Shale	5248	5278
Shale	5278	5418
Dark Lime	5418	5508
Shale	5508	5537
Gray Shale	5537	5623
Black Shale	5623	5671
Brown Break	5671	5677
Corniferous Lime	5677	5714
Lt. Brown Chert	5714	5777
Dark Brown Chert	5777	5823
Break in chert	5823	5857
Oriskany Sand	5857	6062
Total Depth		6086

27

5677
2197

- 3480

5857
2197

- 3660

Gas 5858-6002-6024-6026 Light

P. S. PYLES NO. 9315 WELL.

Portland District, Preston County, W. Va.
 By Hope Natural Gas Co., Clarksburg, W. Va.
 Located 3.63 miles S. of 39° 30' and 3.35 miles W. of 79° 30' - NE - Kingwood
 Quadrangle.

Elevation, 2197' L.

Permit - Preston-9.

Drilling commenced Nov. 18, 1948; completed May 2, 1949.

Shot May 3, 1949.

Acidized May 18, 1949.

Gas well volume, 73,000 cu. ft.

Fresh water, 38'; 114', show water, 595'.

Salt water, 6062-6067'.

10" casing, 502'; 8½", 1512'; 6⅝", 5683'; all left in.

No coal recorded.

Section based on samples from 4804 to 6088'; examined by Russell R. Flowers.

Record to RCT from Flowers May 2, 1951.

Top. Bottom. Thickness.

4804 - 4925	21	Shale, grayish-black to black (highly carbonaceous) TULLY LIMESTONE, 8 FEET
4825 - 4833	8	Limestone, olive-gray, some dark brownish gray, very fine textured, very shaly HAMILTON AND MARCELLUS SHALES, 810 FEET
4833 - 5244	411	Shale, grayish-black to black (carbonaceous), some dark-gray in the upper part
5244 - 5263	19	Shale, dark-gray to grayish-black, somewhat calcareous; small amount of olive-gray, very shaly limestone
5263 - 5400	137	Shale, grayish-black to black (highly carbonaceous)
5400 - 5422	22	Shale, black, some grayish-black to black, very highly carbonaceous
5422 - 5460	38	Shale, dark-gray to brownish-black, calcareous to very shaly limestone; a large amount of grayish-black to black shale at the bottom
5460 - 5488	28	Limestone (very shaly) to shale (calcareous), dark-gray to brownish-black; some grayish-black to black shale
5488 - 5510	22	Shale, grayish-black to black, highly carbonaceous; a large amount of dark-gray to olive-black, very shaly limestone and calcareous shale in the lower part
5510 - 5544	34	Limestone (shaly) to shale (calcareous), dark-gray to olive-black
5544 - 5570	26	Shale, grayish-black to black (highly carbonaceous); a large amount of dark-gray to olive-black, calcareous shale and shaly limestone at the top and bottom; small amounts of pyrite and white to light-gray vein calcite
5570 - 5596	26	Limestone (very shaly) to shale (calcareous), dark-gray to olive-black; small amount of white to light-gray vein calcite; some grayish-black to black shale
5596 - 5643	47	Shale, black, very highly carbonaceous, some grayish-black to black in the upper part, small amounts are highly calcareous; small amounts of white to light-gray vein calcite HUNTERSVILLE CHERT, 213 FEET
5643 - 5707 2197 3446	64	Shale, (highly calcareous) to limestone (very shaly), grayish-black to black, slightly cherty; some olive-gray to brownish-black, very shaly siltstone (bentonite)
5707 - 5712	5	Limestone, grayish-black, with medium- to dark-gray spots, very shaly

Top.	Bottom.	Thickness.	
5712	- 5718	6	Limestone, grayish-black, very shaly, cherty to a medium- to dark-gray calcareous chert
5718	- 5724	6	Chert, light- to medium-light gray with some dark-gray to grayish-black (very shaly), calcareous, dolomitic, translucent to opaque
5724	- 5726	2	Chert, light- to medium-gray, mottled with dark-gray to grayish-black (shaly), calcareous, somewhat dolomitic
5726	- 5731	5	Chert, light- to medium light gray, translucent to "dead", slightly calcareous and dolomitic; some dark-gray (shaly) chert in the lower part; much of the chert contains some siliceous, sponge spicules (?)
5731	- 5737	6	Chert, light- to medium light gray, some medium-gray, translucent to transparent; some "dead", many of the pieces contain siliceous sponge spicules (?), contains some dark-gray (shaly) material in spots and streaks and along fractures, calcareous at the bottom
5737	- 5748	11	Chert, light- to medium-gray, some dark-gray to grayish-black (shaly), translucent to "dead", highly fractured, with shaly material and some quartz as fillings, much of the sample contains siliceous sponge spicules (?), slightly dolomitic in the upper part
5748	- 5751	3	Chert, light- to medium light gray with some dark-gray (very shaly), transparent to translucent, much of the chert contains large numbers of siliceous sponge spicules (?), slightly dolomitic
5751	- 5760	9	Chert, medium light to medium-gray, some dark-gray (shaly), mostly translucent, most of the chert contains an abundance of siliceous sponge spicules (?)
5760	- 5766	6	Siltstone, medium light to dark-gray (shaly), glauconitic at the top, slightly dolomitic, cherty
5766	- 5771	5	Chert (silty) to siltstone, medium- to dark-gray (shaly), slightly dolomitic
5771	- 5817	46	Chert, medium- to dark-gray, "dead", shaly to a grayish-black siliceous shale; a very small amount of white dolomite
5817	- 5825	8	Chert, dark-gray, shaly, to a grayish-black siliceous shale
5825	- 5856	31	Shale (highly silicified) to shale, grayish-black to black; trace of white dolomite
ORISKANY SANDSTONE, 27 (?) FEET			
5856	- 5861	5	Sandstone, very light to light-gray, fine- to medium-grained, subrounded to rounded, (clear, glassy quartz), some coarse (rounded) grains, calcareous
5861	- 5863	2	Sandstone, light-gray, fine-grained, highly calcareous
5863	- 5867	4	Sandstone, light-gray, fine- to medium-grained, some coarse grains, subrounded to rounded, very highly calcareous in part; some dark interstitial material
5867	- 5871	4	Sandstone (highly calcareous) to limestone, (very shaly, very sandy), medium- to dark-gray, very fine to medium-grained (rounded)
5871	- 5874	3	Sandstone, medium-gray, conglomeratic, very fine to very coarse grained, subrounded to rounded, very highly calcareous
5874	- 5875	1	Sandstone, very light gray, fine-grained, some medium grains, subrounded to rounded, highly calcareous
5875	- 5883	8	Sandstone, light- to medium-gray, very fine to medium-grained, very highly calcareous to a very sandy limestone

(Continued on p. 3).

Top. Bottom. Thickness.

HELDERBERG FORMATION, 205+ FEET			
Top.	Bottom.	Thickness.	
5883	5889	6	Limestone (very sandy and silty) to sandstone (very fine, very shaly in part, very highly calcareous), medium- to dark-gray (with layers of grayish-black shale), many fine to medium grains in the lower part
5889	5896	7	Sandstone, medium-gray (with dark-gray, shaly streaks), very fine to fine-grained, subrounded, many medium (rounded) grains, very highly calcareous
5896	5898	2	Sandstone, light-gray (with medium- to dark-gray, shaly spots and streaks), mostly fine to medium-grained; highly calcareous
5898	5900	2	Sandstone, light- to medium-gray, very fine to fine-grained, some dark (shaly) material, very highly calcareous
5900	5915	15	Siltstone to sandstone (very fine), dark-gray, some medium-gray, very shaly, very highly calcareous, with some silty and sandy limestone, contains many fine to medium sand grains, somewhat lighter in color from 5910 to 6915', some fossil fragments
(Definitely Helderberg)			
5915	5919	4	Sandstone, medium- to dark-gray, very fine to fine-grained, some medium grains in the upper part, very silty to a very shaly siltstone (dark-gray to grayish-black), very highly calcareous
5919	5920	1	Sandstone, light- to medium-gray (somewhat shaly), very fine to fine, some medium (rounded) grains, highly calcareous with spots of sandy limestone
5920	5922	2	Limestone, medium-gray (with spots of white calcite and dark-gray shale), very sandy (very fine to medium-grained)
5922	5934	12	Limestone (silty to siltstone (highly calcareous), medium- to dark-gray (with dark-gray to grayish-black, very shaly streaks) some fine to medium sand, some fossil fragments
5934	5944	10	Sandstone, light- to medium-gray, some dark-gray (shaly), very fine to fine-grained, highly calcareous
5944	5952	8	Limestone, (very sandy) to sandstone (very fine), highly calcareous, medium light to medium dark gray, some dark-gray to grayish-black (very shaly), silty
5952	5959	7	Sandstone, medium- to dark-gray, (very shaly), very fine to fine, some medium to coarse grains, very highly calcareous to a very shaly (dark-gray to grayish-black) limestone
5959	5962	3	Sandstone, light- to medium-gray, very fine to fine-grained, some medium grains, contains some dark (shaly) material, highly calcareous
5962	5975	13	Sandstone, (fine- to medium-grained), some coarse rounded and some very fine grains, very highly calcareous) to limestone (very sandy), medium light to medium-gray (with white calcite spots and some dark-gray shaly material), mostly fine to very fine, calcareous sandstone in the lower part
5975	5984	9	Limestone, medium-gray (with dark-gray, shaly streaks and white to light-gray spots), very sandy (very fine to medium grains), very silty and very shaly in part
5984	5991	7	Limestone (very sandy) to sandstone (fine to very fine), very highly calcareous, medium-gray with dark-gray (shaly) streaks and light-gray spots
5991	6002	11	Sandstone, medium light to dark-gray (very shaly), very fine to fine-grained, some medium grains, very highly calcareous with some limestone spots

(OVER, p. 4)

Top.	Bottom.	Thickness.	
6002	- 6008	6	Sandstone, medium light gray, very fine to fine-grained, calcareous, very highly calcareous in the lower part
6008	- 6020	12	Limestone (very sandy), to sandstone (very highly calcareous, very fine), medium-gray, a large amount of dark-gray to grayish-black (very shaly) at 6015 to 6017'
6020	- 6027	7	Sandstone, very light to medium light gray, fine- to medium-grained in the upper part, fine-grained in the lower part, subrounded, contains some black interstitial material, calcareous
6027	- 6033	6	Sandstone, light-gray, fine-grained, some medium grains, highly calcareous, this and the above interval look like Oriskany Sand; some medium- to dark-gray, very fine to fine-grained, highly calcareous sandstone at the bottom
6033	- 6039	6	Sandstone, medium-gray (with grayish-black, very shaly streaks), very fine grained, very highly calcareous
6039	- 6047	8	Siltstone and sandstone (very fine), very highly calcareous to limestone, medium- to dark-gray
6047	- 6053	6	Sandstone, medium-gray, very fine, some dark-gray (shaly), highly calcareous to limestone
6053	- 6062	9	Sandstone, light- to medium-gray, some dark-gray, very fine grained, very highly calcareous, some fine- to medium-grained in the lower part
6062	- 6074	12	Limestone, medium dark to dark-gray, with light-gray spots, mostly dark-gray at the top, somewhat sandy (very fine to fine)
6074	- 6083	9	Limestone, medium- to dark-gray (with light-gray spots), very sandy (very fine to fine), slightly dolomitic
6083	- 6088	5	Sandstone, medium light gray, very fine grained, very highly calcareous, slightly dolomitic
	6086		Total depth (from driller's log).