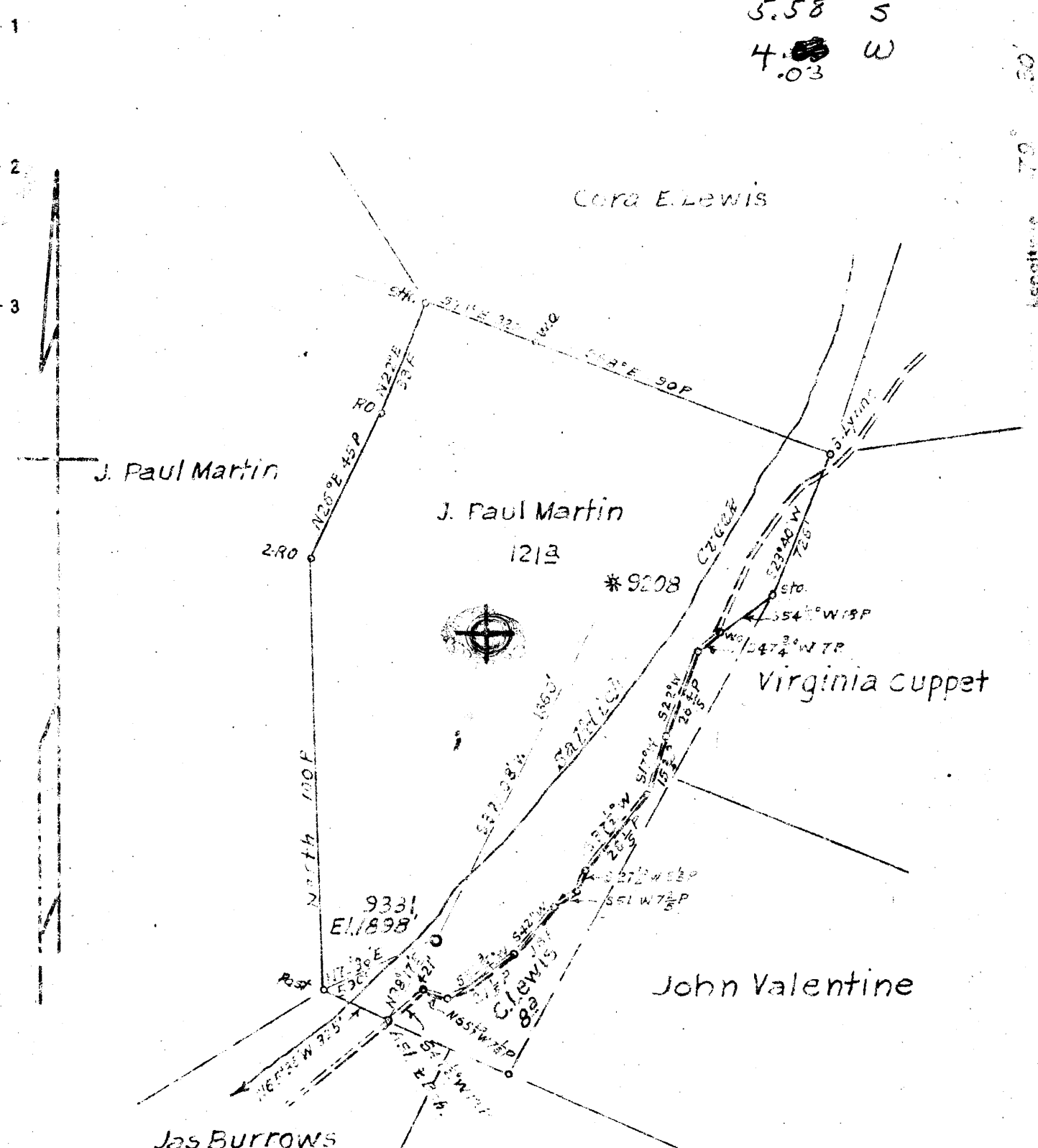


4 M

P

Latitude 39 30

5.58 S  
4.03 W



New Location  X  
 Drill Deeper   
 Abandonment

Robert L Mitchell

FB. 896 P. 29-30.

Company Hope Natural Gas Co.  
 Address Clarksburg, W. Va.  
 Farm J. Paul Martin  
 Tract \_\_\_\_\_ Acres 121 unit Lease No. 53822  
 Well (Farm) No. 2 Serial No. 9331  
 Elevation (Spirit Level) 1898'  
 Quadrangle Kingwood NE  
 County Preston District Portland  
 Engineer W. M. Bowers  
 Engineer's Registration No. 900  
 File No. \_\_\_\_\_ Drawing No. \_\_\_\_\_  
 Date 12-23-48 Scale 1" = 40'

STATE OF WEST VIRGINIA  
 DEPARTMENT OF MINES  
 OIL AND GAS DIVISION  
 CHARLESTON

WELL LOCATION MAP  
 FILE NO. PREAS-10

+ Denotes location of well on United States Topographic Maps, scale 1 to 62,500, latitude and longitude lines being represented by border lines as shown.

- Denotes the well spaces on border line of original tracing.

Deep Well 2967

WEST VIRGINIA DEPARTMENT OF MINES  
OIL & GAS DIVISION  
W E L L R E C O R D

Permit No. Pres 10  
Kingwood Quad.

Gas Well  
CASING & TUBING

Company	Hope Natural Gas Company			
Address	445 West Main St., Clarksburg, W.Va.	16	14	14
Farm	J. Paul Martin <sup>1/2</sup> Acres 121	11	319	319
Location		9	1491	1491
Well No.	9331 Elev. 1898	7	4903	4903
District	Portland Preston County			

Casing cemented:  
7" set in 30 bags  
cement.

Commenced Feb. 16, 1949  
Completed June 21, 1949  
Date shot 6-20-49 Depth 5171 to 5203  
" 5281 to 5331

No coal recorded

Volume 2,071,000 Gals.  
Rock Pressure 2140# 24 hrs.  
No water recorded

Surface	0	32
Slate Shell	32	130
Broken Lime	130	150
Sand	150	275
Slate Shell	275	470
Hard Lime	470	500
Slate Shell	500	810
Broken brown Sand	810	850
Slate Shell	850	1122
Benson Sand	1122	1178
Slate Shell	1178	2060
Limey Shale	2060	2198
Lt. Brown Lime	2198	2208
Grey Slate Shell	2208	2720
Grey Sand	2720	2730
Slate Shell	2730	3473
Lime formation	3473	3557
Slate Shell	3557	4000
Br. Slate & Shell	4000	4103
Tully Lime	4103	4120
Slate Shell	4120	4305
Br. Lime	4305	4310
Slate Shell Brown	4310	4350
Soft Lime Brown	4350	4401
Shale & Shell	4401	4718
Black Shale	4718	4775
Grey Lime	4775	4802
Black Shale	4802	4870
Dark Lime	4870	4875
Brown Break - <i>Tinea Melikentronia</i>	4875	4890
Corniferous Lime	4880	4900
Chert	4900	5143
Slate <i>Needmore</i>	5143	5172
Oriskany Sand	5172	5331
Total Depth		5330

4880  
1898  

---

-2982

5172  
1898  

---

-3274

(485)

Gas 4926-42-61-64-5014-5115 36/10ths W 1" FM  
Gas 5173-74-78-80-83-98 5285-5322 (Before shot 836 M)

Orisk

Portland District, Preston County, W. Va.

By Hope Natural Gas Co., 445 W. Main St., Clarksburg, W. Va.

Located 5.58 mi. S. of 39° 30' and 4.05 mi. W. of 79° 30' - NE - Kingwood  
Quadrangle.

Elevation, 1898' L.

Drilled under permit Pres-10.

Drilling commenced Feb. 16, 1949; completed June 21, 1949.

Shot June 20, 1949, at 5171-5203' and 5281-5331'; with 90 and 100 qts.

Gas well; volume, 2,071,000 cu. ft.

Rock pressure, 2140 lbs. in 24 hrs.

16" casing, 14', 11", 319'; 9", 1491'; 7", 4903'; all left in.

Gas at 4926, 4942, 4961, 4964, 5014, 5115'; Oriskany gas at 5173, 5174,  
5178, 5180, 5183, 5198, 5285'.

856,000 cu. ft. before shot.

Section based on samples from 3996 to 5360'; examined by Russell R. Flowers.

Record to RCT from Flower May 12, 1952.

Top.	Bottom.	Thickness.	
3996	4103	107	HARBELL SHALE, 107+ FEET Shale, grayish-black (somewhat carbonaceous), some grayish-black to black (carbonaceous) at the bottom
4103	4120	17	TULLY LIMESTONE, 17 FEET Limestone, dark-gray to olive-black, argillaceous, pyritic in part; a large amount of grayish-black to black shale, highly calcareous in part (cavings?)
4120	4164	44	HAMILTON AND MARCELLUS SHALES, 758 FEET Shale, dark-gray to grayish-black, highly calcareous in the upper part
4164	4485	321	Shale, dark-gray to grayish-black, some grayish-black to black (carbonaceous), small amount is highly calcareous
4485	4550	65	Shale, dark-gray, somewhat calcareous and dolomitic
4550	4765	215	Shale, dark-gray to grayish-black, some grayish-black to black (carbonaceous), small amount is calcareous
4765	4789	24	Shale, medium dark gray, calcareous, somewhat dolomitic
4789	4878	89	Shale, grayish-black, somewhat carbonaceous, calcareous, slightly pyritic; small amount of shale is slicken-sided; small amount of calcite; small amount of brownish-black, pyritic metabentonite at the bottom
4878	4898	20	ONONDAGA GROUP, 293 FEET Shale, dark-gray to grayish-black, highly calcareous to a very shaly limestone (predominant in the lower part); some dark yellowish-brown to brownish-black metabentonite at the top
4898	4903	5	Shale, (highly calcareous) to limestone (very shaly), dark-gray to grayish-black, very cherty
4903	4914	11	Chert, medium- to dark-gray, argillaceous, calcareous
4914	4933	19	Chert, light-gray, some medium- to dark-gray (argillaceous), translucent, somewhat calcareous and dolomitic
4933	4944	11	Chert, light-gray (transparent to translucent), mottled with dark-gray to grayish-black (highly argillaceous), spicular, slightly dolomitic
4944	4953	9	Chert, light- to medium-gray (translucent; spicular), mottled with dark-gray to grayish-black (argillaceous), slightly dolomitic
4953	4964	11	Chert, light- to dark-gray (argillaceous), silty, with some siltstone, slightly dolomitic, small amount is glauconitic

Top.	Bottom.	Thickness.	
4964	- 4970	6	Chert, medium to medium dark gray (ordinary), mottled with dark-gray to grayish-black (highly argillaceous), slightly dolomitic
4970	- 4983	13	Chert (medium- to dark-gray) to silicified, silty shale (grayish-black)
4983	- 4999	16	Chert, medium-gray (silty in part), some dark-gray to grayish-black (argillaceous to silicified shale), slightly dolomitic
4999	- 5014	15	Shale, grayish-black; silty, calcareous; a large amount of light- to dark-gray chert at the bottom
5014	- 5019	5	Chert, light- to medium-gray, mottled with grayish-black, silicified shale, somewhat calcareous and dolomitic
5019	- 5023	4	Chert, light- to medium-gray, mottled with dark-gray to grayish-black (argillaceous), somewhat calcareous and dolomitic
5023	- 5034	11	Chert, light- to medium-gray (translucent, somewhat spicular), some dark-gray to grayish-black (argillaceous), slightly calcareous, slightly dolomitic
5034	- 5044	10	Chert, light- to medium-gray (translucent to opaque), somewhat spicular, mottled with some dark-gray to grayish-black (argillaceous), slightly dolomitic
5044	- 5055	11	Chert, light-gray (translucent) spicular, mottled with grayish-black (argillaceous), silty in part, slightly dolomitic
5055	- 5070	15	Chert, light- to medium-gray, mottled with dark-gray to grayish-black (highly argillaceous); trace of dolomite
5070	- 5077	7	Chert, light- to dark-gray, some dark-gray to grayish-black (argillaceous), very silty, slightly dolomitic; trace of glauconite
5077	- 5097	20	Chert, medium- to dark-gray, a moderate to large amount of grayish-black (highly argillaceous), silty at the bottom; trace of dolomite
5097	- 5107	10	Chert (medium dark gray) to silicified shale (grayish-black); trace of dolomite
5107	- 5126	19	Chert, medium to dark-gray; some grayish-black, silicified shale
5126	- 5143	17	Chert, medium dark gray to shale, grayish-black (silicified)
5143	- 5162	19	Shale, grayish-black, silicified
5162	- 5171	9	Shale, grayish-black
RIDGELY SANDSTONE, <sup>61</sup> / <sub>2</sub> FEET			
(Top 15 feet like subsurface Criskany in the Charleston area)			
5171	- 5181	10	Sandstone, very light to light-gray, fine- to medium-grained, subrounded to rounded, some coarse grains, quartzose, contains small amounts of dark interstitial material, calcareous (cement)
5181	- 5186	5	Sandstone, light-gray, fine-grained, some medium grains, subrounded to rounded, very fine to fine-grained at the top, calcareous (cement)
5186	- 5198	12	Sandstone, light-gray (some medium- to dark-gray, argillaceous streaks at the top), very fine to medium-grained, some coarse grains at the top, angular to subrounded, some rounded grains, very highly calcareous
5198	- 5209	11	Sandstone, medium-gray with light-gray spots, very fine to fine-grained, some medium-gray, subangular to subrounded, very fine at the top and bottom, silty, very highly calcareous, contains some interstitial (shaly) material

Top.	Bottom.	Thickness.	
5209	- 5215	6	Sandstone (highly calcareous) to limestone (very sandy), medium- to dark-gray, very fine to fine-grained, some medium to coarse grains, silty, subangular to subrounded, somewhat cherty; some grayish-black shale
5215	- 5223	8	Sandstone, light- to medium-gray, very fine to medium-grained, subangular to subrounded, some coarse grains, silty, very highly calcareous, somewhat argillaceous
5223	- 5229	6	Sandstone, very light to light-gray, very fine to medium-grained, subangular to subrounded, some coarse (rounded) grains, silty, highly calcareous
5229	- 5232	3	Sandstone, light-gray, as above, but more calcareous at the top
HELDERBERG GROUP, 128+ FEET			
5232	- 5235	3	Sandstone, medium-gray, some dark-gray (argillaceous streaks) very fine grained, very silty, some fine to medium grains (subrounded to rounded), very highly calcareous
5235	- 5244	9	Sandstone, medium-gray to dark-gray (argillaceous), very fine grained, very silty, many fine to coarse (rounded) sand grains, very highly calcareous
5244	- 5257	13	Sandstone, medium-gray to grayish-black, very fine grained, silty, some fine to coarse grains, highly argillaceous, very highly calcareous to limestone (sandy); some very fine to medium-grained, light-gray sandstone at the bottom
5257	- 5267	10	Sandstone, light- to medium-gray, with some dark-gray (shaly) streaks, very fine to fine-grained, contains many fine to medium (rounded) grains, very highly calcareous
5267	- 5272	5	Sandstone, light- to medium-gray, very highly calcareous with limestone spots, very fine to fine-grained, many fine to medium and some coarse, rounded grains, somewhat argillaceous; trace of chert (lacy)
5272	- 5281	9	Sandstone (very fine, highly calcareous) to limestone (very sandy), dark-gray to grayish-black (highly argillaceous) in the upper part, light- to dark-gray (somewhat argillaceous) in the lower part, some fine to coarse sand grains
5281	- 5286	5	Sandstone, light- to medium-gray at the top, light-gray in the middle and lower parts; fine-grained, subangular to subrounded, some medium (rounded) grains, some very fine grains, very highly calcareous
5286	- 5291	5	Sandstone (very fine, highly calcareous) to limestone (very sandy), light- to medium-gray, some dark-gray, (argillaceous), some fine to medium grains (rounded)
5291	- 5297	6	Sandstone (very fine, very highly calcareous) to limestone (very sandy), medium- to dark-gray (argillaceous), some grayish-black (highly argillaceous) at the top, very silty, some fine to medium (rounded) sand
5297	- 5305	8	Sandstone, very light to light-gray with some dark-gray to grayish-black (argillaceous) streaks, fine- to medium-grained, some coarse grains at the top, subangular to rounded, highly calcareous, very highly calcareous at the bottom
5305	- 5308	3	Sandstone, light-gray, very fine to fine-grained at the top to fine-grained at the bottom, very highly calcareous

Top. Bottom. Thickness.

5308 - 5331	23	Sandstone, (very fine, very silty, highly calcareous), to limestone (very sandy to siltstone), medium- to dark-gray, with grayish-black (argillaceous) streaks in upper part and light-gray (limestone) spots, somewhat cherty
5331 - 5343	12	Limestone (very sandy) to sandstone (very fine, highly calcareous), medium-gray, some dark-gray (argillaceous), some slightly cherty, some fine to medium (rounded) grains at the bottom
5343 - 5360	17	Limestone, medium- to dark-gray with light-gray spots, very sandy to a highly calcareous sandstone, very fine to fine-grained, some medium grains, very fine to medium-grained at the bottom, contains some argillaceous material
5360		Total depth