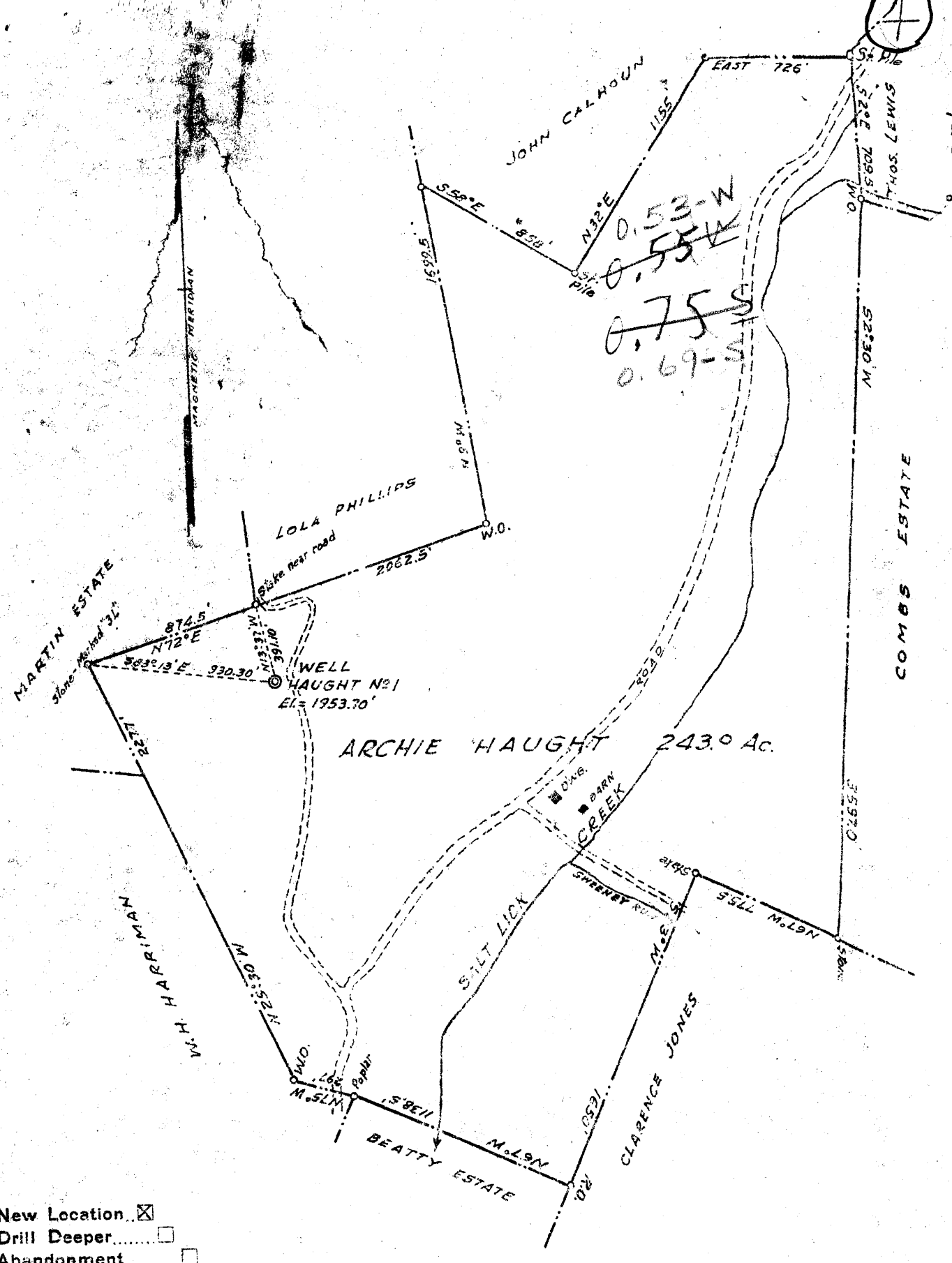


Latitude 39° - 25'

Longitude 79° - 35'

4



- New Location
- Drill Deeper
- Abandonment

Company ORVILLE FBERLY & WILLIAM SNEE
 Address 208 UNION TRUST BLDG, UNIONTOWN, PA.
 Farm ARCHIE HAUGHT
 Tract _____ Acres 243.0 Lease No. _____
 Well (Farm) No. 1 Serial No. _____
 Elevation (Spirit Level) 1953.70'
 Quadrangle KINGWOOD - C
 County PRESTON District UNION
 Engineer C.W. McCUTCHEON
 Engineer's Registration No. 650
 File No. _____ Drawing No. _____
 Date MAY 19, 1951 Scale 1" = 500'

STATE OF WEST VIRGINIA
 DEPARTMENT OF MINES
 OIL AND GAS DIVISION
 CHARLESTON

WELL LOCATION MAP
 FILE NO. PRES-23

- + Denotes location of well on United States topographic Maps, scale 1 to 62,500, latitude and longitude lines being represented by border lines as shown.
- Denotes one inch spaces on border lines of original tracing.

Deep well

WEST VIRGINIA DEPT. OF MINES
OIL & GAS DIVISION
WELL RECORD

Permit No. PAS-23
Kingwood Quad.

Company Cumberland & Allegheny Gas Co.
Farm Archie Haught 246 Acres
Well No. 463
District Union Preston County
Commenced 6/9/51
Completed 12/20/51
Open Flow 17/10 Merc. 6 5/8" 5,868 M
R.P. 2020# 40hrs.

CASING & TUBING

10	355	355
8 1/2	1397	1397
7" OD	4934	4934

Clay	0	10	Slate & Shells	2734	2855
Sand	10	40	Lime	2855	2870
Slate	40	48	Slate	2870	2898
Lime	48	70	Lime	2898	3058
Slate	70	81	Slate & Shale	3058	3135
Lime	81	125	Shale (Lt. Brown) 8	3135	3150
Slate	125	150	Slate & Shells	3150	3218
Lime	150	260	Lime	3218	3274
Slate	260	287	Slate & Shells	3274	3398
Lime	287	340	Shale (Brown)	3398	3430
Slate	340	365	Slate	3430	3434
Lime	365	400	Lime	3434	3590
Slate	400	406	Slate	3490	3760
Lime	406	462	Lime	3760	3800
Slate	462	490	Shale	3800	3973
Lime (Brown)	490	625	Shale	3973	4010
Slate	625	632	Lime	4010	4040
Lime	632	695	Lime	4040	4052
Slate	695	702	Slate & Shells	4052	4112
Lime	702	750	Shale	4112	4170
Slate & Shells	750	860	Slate & Shells	4170	4273
Slate (Dark)	860	910	Shale	4273	4306
Lime	910	932	Lime	4306	4312
Slate & Shells	932	1160	Shale (Black)	4312	4430
Lime	1160	1198	Full Lime	4430	4450
Slate	1198	1210	Shale	4450	4635
Slate & Shells	1210	1300	Lime (Dark)	4635	4657
Lime Shells	1300	1398	Lime (Light)	4657	4867
Lime	1398	1475	Shale (Marsollis)	4867	4908
Slate & Shells	1475	1509	Brake (Brown)	4908	4910
Benson Sand	1509	1545	Lime (Onandaga)	4910	4925
Brown Shale	1545	1580	Slate	4925	4935
Slate & Shells	1580	1847	Chert	4935	4986
Lime	1847	1850	TOTAL DEPTH		4986
Slate & Shells	1850	2042			
Lime	2042	2045			
Slate & Shells	2045	2228			
Lime (Broken)	2228	2243			
Slate & Shells	2243	2337			
Slate (Broken)	2337	2348			
Slate & Shells	2348	2530			
Slate	2530	2548			
Lime	2548	2664			
Slate	2664	2670			
Lime (Broken)	2670	2734			

Gas 4725 Would Not Test Thru 1/8" Plate
Gas 4965 9/10 W 5/8 Plate
Gas 4986 17/10 W 6 1/4"

1590 M
463
4925
1954
-2971



STATE OF WEST VIRGINIA
 DEPARTMENT OF MINES
 OIL AND GAS DIVISION
 DRILL DEEPER
 WELL RECORD

Quadrangle Kingwood
 Permit No. PRES.23-D

Oil or Gas Well Gas
 (KIND)

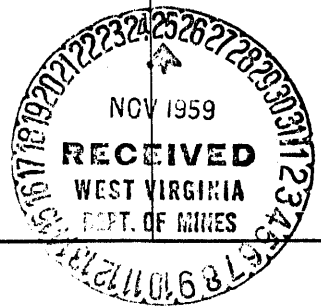
Company Atlantic Seaboard Corp.
 Address P.O. Box 1273; Charleston 25, W. Va.
 Farm Archie M. Haught Acres 74 1/2
 Location (waters) Saltlick Creek
 Well No. 7365 Elev. 1924.77
 District Union County Preston
 The surface of tract is owned in fee by _____
 Address _____
 Mineral rights are owned by Archie M. Haught
R.F.D. #3 Address Waynesburg, Penna.
 Drilling commenced Aug. 3, 1959
 Drilling completed Aug. 6, 1959
 Date Shot No From _____ To _____
 With _____
 Open Flow /10ths Water in _____ Inch
/10ths Merc. in _____ Inch
 Volume _____ Cu. Ft.
 Rock Pressure _____ lbs. _____ hrs.
 Oil _____ bbls., 1st 24 hrs.
 WELL ACIDIZED _____
 WELL FRACTURED _____

Casing and Tubing	Used in Drilling	Left in Well	Packers
Size			Kind of Packer
16			
13			Size of
10			
8 1/4			Depth set
6 5/8			
5 3/16		5362	Perf. top
4 1/2			Perf. bottom
2			Perf. top
Liners Used			Perf. bottom

CASING CEMENTED Yes SIZE 4 1/2" No. Ft. _____ To Surface
 Date Aug. 9, 1959
 COAL WAS ENCOUNTERED AT _____ FEET _____ INCHES
 _____ FEET _____ INCHES FEET _____ INCHES
 _____ FEET _____ INCHES FEET _____ INCHES

RESULT AFTER TREATMENT Storage Well
 ROCK PRESSURE AFTER TREATMENT _____
 Fresh Water _____ Feet Salt Water _____ Feet

Formation	Color	Hard or Soft	Top	Bottom	Oil, Gas or Water	Depth	Remarks
Drill Deeper Record From 4988'							
Chert				5078			
Chert Shale			5078	5087	4910	5087	5220
Oriskany			5087	5220	1925	1925	1925
Helderberg			5220	-			
Total Depth				5362	2985	3162	3295
Well Surveys Run							
Gamma Ray							
Laterolog							
Microlaterolog							



Union District, Preston County, W. Va.

By Orville Eberly and William E. Snee, (to Cumberland & Allegheny Gas Co.).
 Located 0.7 mi. S. of 39° 25' and 0.54 mi. W. of 79° 35' - C - Kingwood Quadrangle.
 Elevation, 1955.70' L.
 Permit Pres-23.

Drilling commenced Aug. 25, 1951; completed December 8, 1951.

Gas well; volume, 6,472,000 cu. ft.

Section based on samples from 4273 to 4985'; examined by Russell R. Flowers.

Record to RCT from Flowers March 14, 1952.

Top. Bottom. Thickness.

4273 - 4306	33	Shale, dark-gray, some grayish-black, pyritic in part HARRELL SHALE, 133 FEET
4306 - 4328	22	Shale, grayish-black, some grayish-black to black (carbonaceous) trace of limestone
4328 - 4431	103	Shale, grayish-black to black, carbonaceous, a little vein calcite and a moderate amount of vein pyrite at the bottom
4431 - 4425	-6	Depth correction?
4425 - 4435	10	Shale, grayish-black, very highly calcareous, pyritic in part
4435 - 4437	2	No sample
4437 - 4439	2	Shale, grayish-black to black, carbonaceous TULLY LIMESTONE, 26 FEET
4439 - 4465	26	Limestone, olive-gray to medium dark gray, shaly, with some medium dark gray calcareous shale, pyritic in part; a large amount of grayish-black to black shale (cavings?) HAMILTON AND MARCELLUS SHALES, 460 FEET
4465 - 4503	38	Shale, grayish-black, some grayish-black to black
4503 - 4631	128	Shale, dark-gray to grayish-black, some grayish-black to black, somewhat darker in the lower part; trace of vein calcite
4631 - 4681	50	Shale, dark-gray, some grayish-black, dolomitic in part in the lower part; some grayish-black to black shale at the bottom
4681 - 4814	133	Shale, dark-gray to black, somewhat carbonaceous; some vein calcite and pyrite from 4716 to 4780', and a very small amount at the bottom
4814 - 4866	52	Shale, grayish-black to black, carbonaceous, pyritic with a little vein pyrite and vein calcite
4866 - 4884	18	Shale, medium dark gray (with olive-gray cast), highly calcareous some vein pyrite and calcite
4884 - 4925	41	Shale, grayish-black to black (carbonaceous), and black (highly carbonaceous), pyritic, calcareous; some brownish-gray to brownish-black, pyritic metabentonite at the bottom HUNTERSVILLE CHERT, 60+ FEET
4925 - 4920	-5	Depth correction?
4920 - 4925	5	Shale, grayish-black to black, carbonaceous, highly calcareous with some shaly limestone, slightly pyritic; a few fine to medium, rounded, quartz grains
4925 - 4935	10	No sample
4935 - 4943	8	Shale to argillaceous chert, dark-gray to grayish-black, highly calcareous in part, dolomitic; a moderate to large amount of light- to medium-gray, somewhat dolomitic chert (mostly lenses and streaks in shale)
4943 - 4949	6	Chert, mottled white to light-gray (spicular in part) and medium to dark-gray (argillaceous), somewhat calcareous, dolomitic in part
4949 - 4963	14	Chert, very light to medium-gray, some dark-gray (argillaceous), silty in part, highly spicular, slightly calcareous, somewhat dolomitic
4963 - 4970	7	Chert, mottled white to medium light gray (translucent to transparent) and dark-gray to grayish-black (argillaceous), highly spicular, fractured (with quartz and shale fillings), slightly dolomitic

(OVER)

ARCHIE HAUGHT NO. 1 WELL (Continued).

Top. Bottom. Thickness.

4970 - 4985	15'	Chert, mottled white to light-gray (translucent to opaque) and dark-gray to greenish-black, spicular, slightly dolomitic, highly fractured (with quartz fillings); some clear vein quartz
4986		Total depth