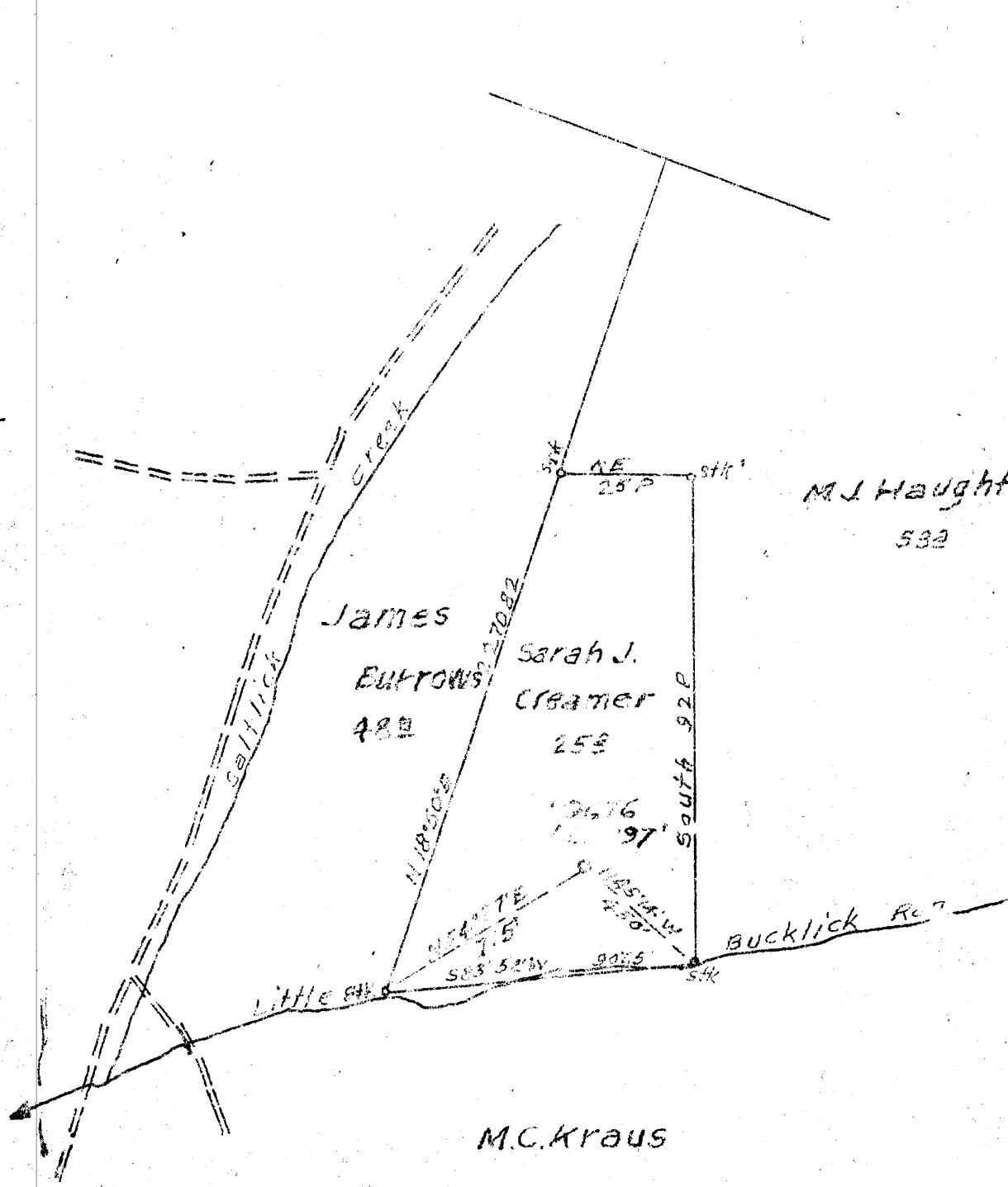


0.095  
4.07 W

Longitude 79 30'



New Location   
 Drill Deeper   
 Abandonment

FB. 1015 P-38-40

Company Hope Natural Gas Co.  
 Address Clarksburg, W.Va.  
 Farm Sarah J. Creamer (UNIT)  
 Tract \_\_\_\_\_ Acres 25 Lease No. 59185  
 Well (Farm) No. \_\_\_\_\_ Serial No. 5676  
 Elevation (Spirit Level) 2097'  
 Quadrangle Kingwood E.C.  
 County Preston District Portland  
 Engineer W.M. Powers  
 Engineer's Registration No. 900  
 File No. \_\_\_\_\_ Drawing No. \_\_\_\_\_  
 Date 8-17-51 Scale 1" = 500'

STATE OF WEST VIRGINIA  
 DEPARTMENT OF MINES  
 OIL AND GAS DIVISION  
 CHARLESTON

WELL LOCATION MAP  
 FILE NO. Pres-28

— Denotes location of well on United States  
 Topographic Maps, scale 1" = 62,500'  
 latitude and longitude lines being represented  
 by border lines as shown.

— Denotes one inch spaces on border  
 of original tracing.

6-6-270

Deep well

3415

WEST VIRGINIA DEPARTMENT OF MINES  
OIL & GAS DIVISION  
W E L L R E C O R D

Permit No. Pres 28  
Kingwood Quad.

Gas Well  
CASING & TUBING

|               |                                      |       |      |                      |
|---------------|--------------------------------------|-------|------|----------------------|
| Company       | Hope Natural Gas Company             |       |      |                      |
| Address       | 445 West Main St., Clarksburg, W.Va. | 13    | 21   | 21                   |
| Farm          | Sarah J. Creamer Acres 25            | 10    | 238  | 238                  |
| Location      |                                      | 8 1/2 | 1298 | 1298                 |
| Well No.      | 9676 Elev. 2097                      | 6 5/8 | 5061 | 5061                 |
| District      | Portland Preston County              |       |      |                      |
| Surface       |                                      |       |      |                      |
| Mineral       |                                      |       |      |                      |
| Commenced     | Oct. 26, 1951                        |       |      | Casing cemented;     |
| Completed     | April 4, 1952                        |       |      | 8" in 45 bags cement |
| Not shot      |                                      |       |      | 7" in 60 bags cement |
| Volume        | 253,000 MCF                          |       |      |                      |
| Rock Pressure | 1520# - hrs.                         |       |      | No coal              |
| Water         | None recorded                        |       |      |                      |

|                |      |      |
|----------------|------|------|
| Surface        | 0    | 40   |
| Slate Shell    | 40   | 200  |
| Lime           | 200  | 275  |
| Slate Shell    | 275  | 1125 |
| Lime           | 1125 | 1200 |
| Slate          | 1200 | 1230 |
| Benson         | 1230 | 1255 |
| Slate Shell    | 1255 | 2500 |
| Lime           | 2500 | 2550 |
| Slate Shell    | 2550 | 3650 |
| Shale Brown    | 3650 | 4325 |
| Shale Dk Brown | 4325 | 4429 |
| Tully Lime     | 4429 | 4446 |
| Shale          | 4446 | 4670 |
| Lime           | 4670 | 4905 |
| Shale Soft     | 4805 | 4971 |
| Lime Dark      | 4971 | 4991 |
| Black Shale    | 4991 | 5037 |
| Brown Break    |      | 5037 |
| Onondaga Lime  | 5037 | 5060 |
| Chert          | 5060 | 5243 |
| Oriskany       | 5243 |      |
| T.D.           |      | 5713 |

485

Gas 5244-47-5382-88 5594

28A

5037  
2097  

---

-2940

5243  
2097  

---

-3146