

M

P

LATITUDE 39° 25'

0 1 2 3

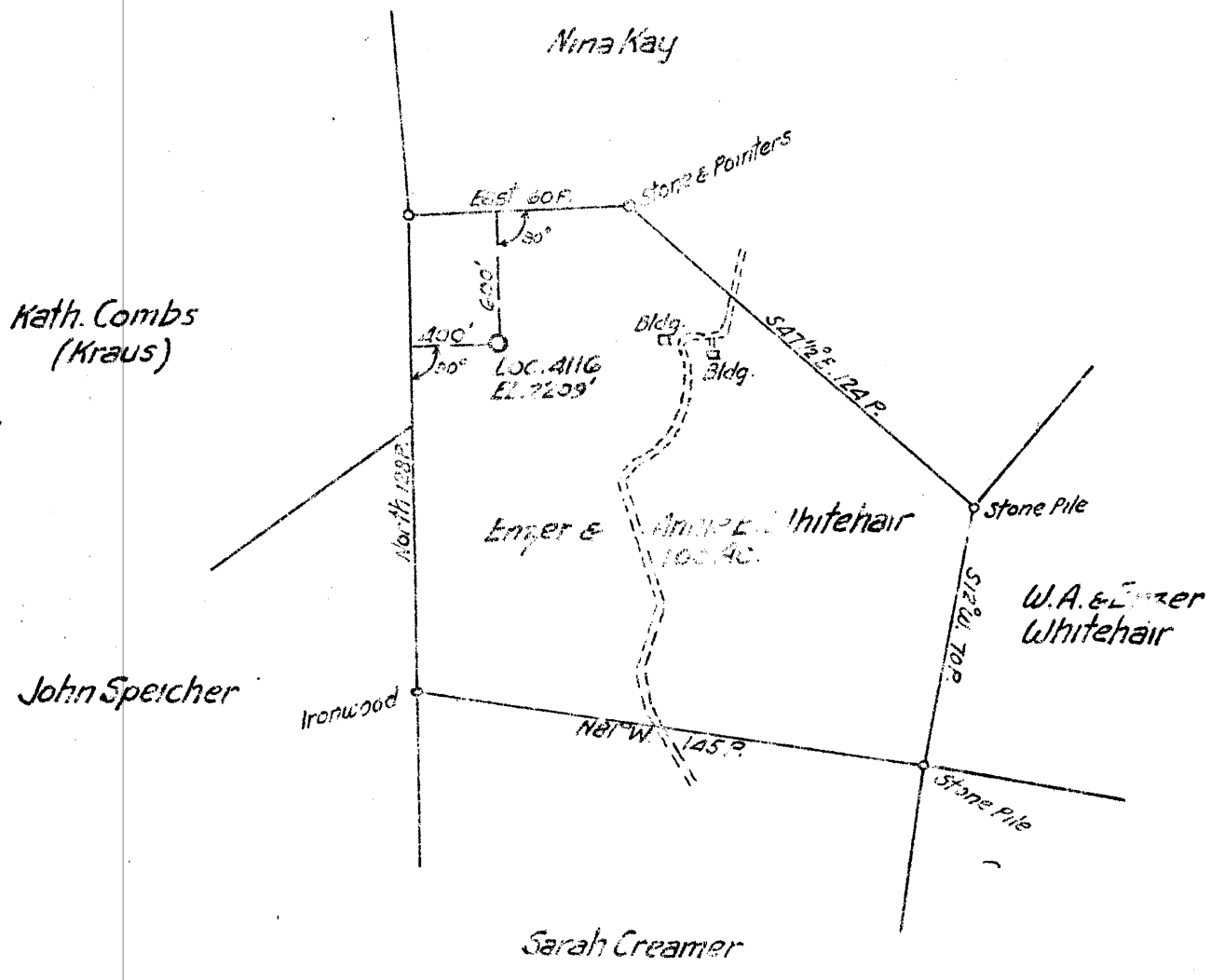
1

2

3

LONGITUDE 79

0.55 S.
3.97 W



COAL OWNED BY _____

NEW LOCATION

DRILL DEEPER

ABANDONMENT

COMPANY The Manufacturers Light & Heat Co.

ADDRESS 800 Union Trust Bldg. Pittsburgh Pa.

FARM Erizer & Annie E. Whitehair

TRACT _____ ACRES 100 LEASE NO. 21918

WELL (FARM) NO. 1 SERIAL NO. 4116

ELEVATION (SPIRIT LEVEL) 7209'

QUADRANGLE Kingwood E. C.

COUNTY Freston W. Va. DISTRICT Portland

ENGINEER John H. Baker

ENGINEER'S REGISTRATION NO. _____

FILE NO. _____ DRAWING NO. Y-13-561

DATE 6-27-1927 SCALE 1" = 800'

STATE OF WEST VIRGINIA
DEPARTMENT OF MINES
OIL AND GAS DIVISION
CHARLESTON

WELL LOCATION MAP

FILE NO. FRES-29

+ DENOTES LOCATION OF WELL ON UNITED STATES TOPOGRAPHIC MAPS, SCALE 1 TO 62,500. LATITUDE AND LONGITUDE LINES BEING REPRESENTED BY BORDER LINES AS SHOWN.

- DENOTES ONE INCH SPACES ON BORDER LINE OF ORIGINAL TRACING

CHARLES ESTIMOT CO. PHIL. PA.

5-10 280

Deep Well



STATE OF WEST VIRGINIA
DEPARTMENT OF MINES
OIL AND GAS DIVISION

Kingwood

WELL RECORD

Permit No. PRES-29

Oil or Gas Well Dry
(KIND)

Company CUMBERLAND AND ALLEGHENY GAS COMPANY
Address 800 Union Trust Bldg., Pgh., Penna.
Farm Enzer Whitehair Acres 100
Location (waters) _____
Well No. 479 Elev. 2209'
District Portland County Preston
The surface of tract is owned in fee by Enzer Whitehair
Terra Alta, West Virginia
Mineral rights are owned by Enzer Whitehair
Terra Alta, West Virginia
Drilling commenced September 19, 1951
Drilling completed March 19, 1953
Date Shot _____ From _____ To _____
With _____
Open Flow /10ths Water in _____ Inch
/10ths Merc. in _____ Inch
Volume _____ Cu. Ft.
Rock Pressure _____ lbs. _____ hrs.
Oil _____ bbls., 1st 24 hrs.
Fresh water _____ feet _____ feet
Salt water _____ feet _____ feet

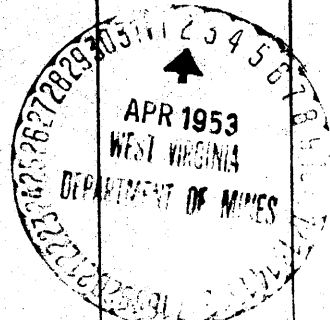
Casing and Tubing	Used in Drilling	Left in Well	Packers
Size			
16			Kind of Packer
18	30'10"	30'10"	
10	478'10"	478'10"	Size of
8 1/4	1633'10"	1633'10"	
6 3/4	5354'9"	5354'9"	Depth set
5 3/16			
3			Perf. top
2			Perf. bottom
Liners Used			Perf. top
			Perf. bottom

CASING CEMENTED _____ SIZE _____ No. Ft. _____ Date _____

COAL WAS ENCOUNTERED AT _____ FEET _____ INCHES
_____ FEET _____ INCHES _____ FEET _____ INCHES
_____ FEET _____ INCHES _____ FEET _____ INCHES

Formation	Color	Hard or Soft	Top	Bottom	Oil, Gas or Water	Depth Found	Remarks
Loose Stone			0	15			
Lime			15	210			
Slate			210	213			
Lime			213	244			
Slate			244	250			
Lime			250	335			
Slate			335	365			
Lime			365	463			
Slate			463	471			
Lime			471	622			
Slate & Shells			622	670			
Lime			670	756			
Slate			756	766			
Lime			766	812			
Slate & Shells			812	977			
Lime			977	988			
Slate & Shells			988	1335			
Lime			1335	1445			
Benson Sand			1445	1466			
Slate & Shells			1466	1628			
Lime			1628	1640			
Slate & Shells			1640	2836			
Lime			2836	2900			
Slate & Shells			2900	3240			
Lime			3240	3385			
Slate & Shells			3385	3630			
Lime			3630	3734			
Slate & Shells			3734	3800			
Lime			3800	4000			
Black Shale			4000	4075			
Gritty Lime			4075	4130			
Black Slate, (Soft)			4130	4385			
Black Shale			4385	4400			
Brown Shale			4400	4471			
Tulley Lime			4471	4516			
Brown Shale			4516	4587			
Black Slate			4587	4691			

5176
2209
-2967



Formation	Color	Hard or Soft	Top	Bottom	Oil, Gas or Water	Depth Found	Remarks
Brown Lime			4691	4710			
Black Slate			4710	4846			
Lime (Grey)			4846	4861			
Black Slate			4861	4922			
Lime			4922	4937			
Marcella Shale			4937	5176			
Lime			5176	5301			
Brown Brake			5301	5304			
Lime			5304	5349			
Chert Sand			5349	5442			
Total Depth			5442				

0.2 - 5176
 2209
 - 2967

No gas in Chert Sand, Dry Hole.

463

5349
 2209
 - 3140

5304
 2209
 3095

Date April 1, 1953

APPROVED CUMBERLAND AND ALLEGHENY GAS COMPANY

By *Paul Cooper*
 (SPECIAL) LAND AGENT