

1.23 Set 39° 25'
4.35 West 79° 30'

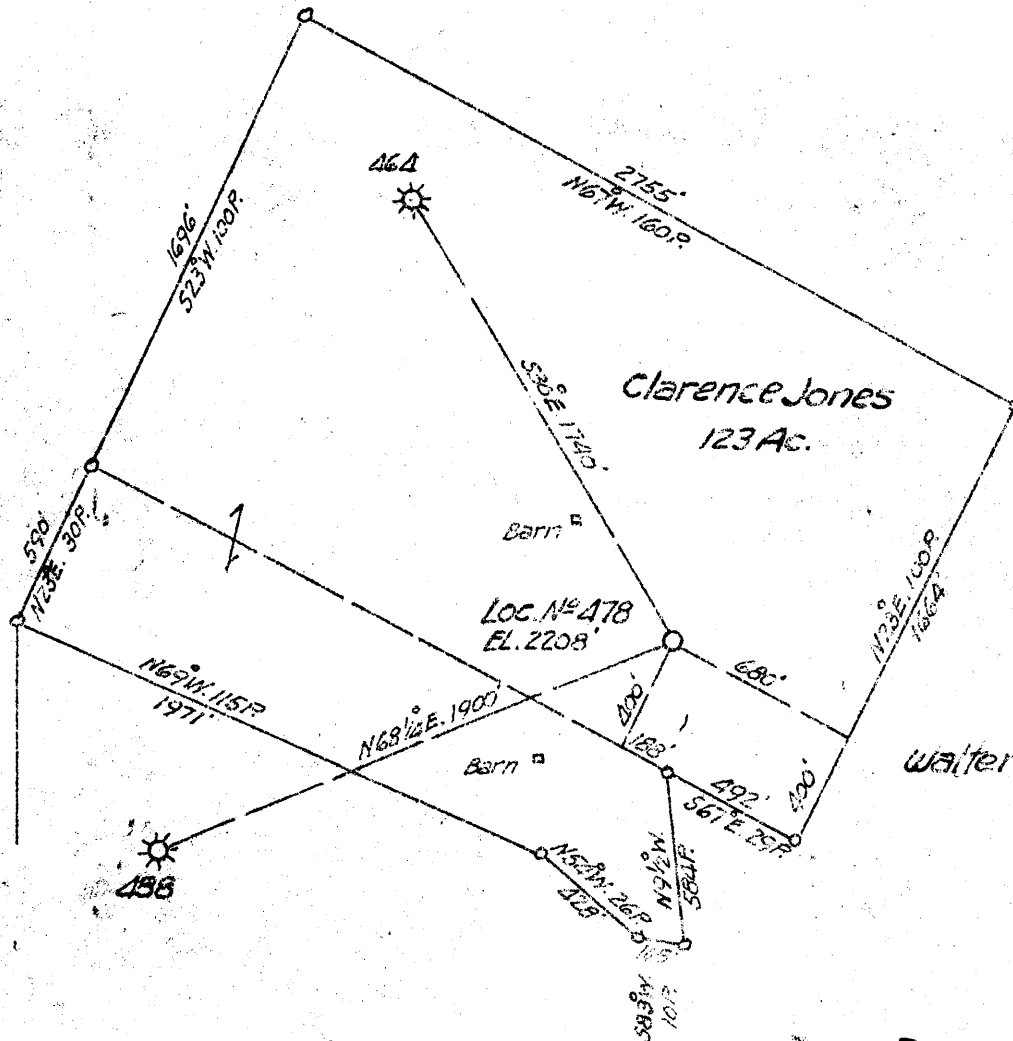
Arch Haight

Clarence Jones
123 Ac.

Walter Nine

Walter Nine

W.G. Beatty



LOC. NO. 478
EL. 2208'

Barn

Barn

464

458

COAL OWNED BY Lessor

NEW LOCATION

DRILL DEEPER

ABANDONMENT

COMPANY Cumberland & Allegheny Gas Co.

ADDRESS Booth Union Trust Bldg. Pittsburgh Pa.

FARM Clarence Jones

TRACT ACRES 123 LEASE NO. 7671

WELL (FARM) NO. 2 SERIAL NO. 478 # 7376

ELEVATION (SPIRIT LEVEL) 2208'

QUADRANGLE Kingwood E C

COUNTY Freston DISTRICT Union

ENGINEER Thomas E. Virgin

ENGINEER'S REGISTRATION NO. 1503

FILE NO. DRAWING NO. Y-13-753

DATE Aug. 25, 1952 SCALE 1"=660'

STATE OF WEST VIRGINIA
DEPARTMENT OF MINES
OIL AND GAS DIVISION
CHARLESTON

WELL LOCATION MAP

FILE NO. Pres-49

+ DENOTES LOCATION OF WELL ON UNITED STATES TOPOGRAPHIC MAPS, SCALE 1 TO 62,500, LATITUDE AND LONGITUDE LINES BEING REPRESENTED BY BORDER LINES AS SHOWN.

- DENOTES ONE INCH SPACES ON BORDER LINE OF ORIGINAL TRACING.

Deep Well

STATE OF WEST VIRGINIA
DEPARTMENT OF MINES
OIL AND GAS DIVISION

Kingwood

WELL RECORD

Permit No. PRES-48

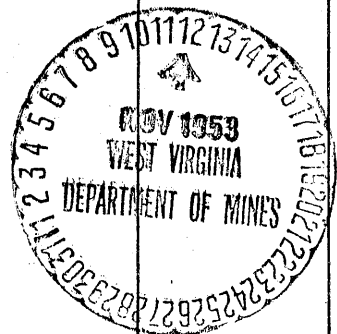
Oil or Gas Well Gas
(KIND)

Company CUMBERLAND AND ALLEGHENY GAS COMPANY
Address 800 Union Trust Building, Pgh., Penna.
Farm Clarence Jones Acres 123
Location (waters) _____
Well No. 2-478 Elev. 2208'
District _____ County _____
The surface of tract is owned in fee by Clarence Jones
Terra Alta, Address West Virginia
Mineral rights are owned by Clarence Jones
Terra Alta, Address West Virginia
Drilling commenced March 2, 1953
Drilling completed October 6, 1953
Date Shot _____ From _____ To _____
With _____
Open Flow 58/10ths Water in 1 1/2 Inch
_____ /10ths Merc. in _____ Inch
Volume 134,311 Cu. Ft.
Rock Pressure 1065 lbs. 48 hrs.
Oil _____ bbls., 1st 24 hrs.
Fresh water _____ feet _____ feet
Salt water _____ feet _____ feet

| Casing and Tubing | Used in Drilling | Left in Well | Packers |
|-------------------|------------------|--------------|----------------------|
| Size | | | |
| 16 | | | Kind of Packer _____ |
| 13 | 23'1" | 23'1" | |
| 10 | 525'6" | 525'6" | Size of _____ |
| 8 1/4 | 1608'8" | 1608'8" | |
| 8 1/4 | 4950'9" | 4950'9" | Depth set _____ |
| 5 3/16 | | | |
| 3 | | | Perf. top _____ |
| 2 | | | Perf. bottom _____ |
| Liners Used _____ | | | Perf. top _____ |
| | | | Perf. bottom _____ |

CASING CEMENTED _____ SIZE _____ No. Ft. _____ Date _____
COAL WAS ENCOUNTERED AT _____ FEET _____ INCHES
_____ FEET _____ INCHES _____ FEET _____ INCHES
_____ FEET _____ INCHES _____ FEET _____ INCHES

| Formation | Color | Hard or Soft | Top | Bottom | Oil, Gas or Water | Depth Found | Remarks |
|----------------|-------|--------------|-------|--------|-------------------|-------------|---------|
| Clay | | | 0 | 40 | 1 | | |
| Lime Stone | | | 40 | 350 | 4944 | 5113 | 5248 |
| Lime & Slate | | | 350 | 371 | 2208 | | |
| Lime | | | 371 | 485 | | | |
| Lime, Broken | | | 485 | 505 | 2736 | 2905 | 3040 |
| Lime | | | 505 | 855 | | | |
| Slate & Shells | | | 855 | 904 | | | |
| Lime | | | 904 | 916 | | | |
| Slate & Shells | | | 916 | 1275 | | | |
| Lime | | | 1275 | 1350 | | | |
| Slate & Shells | | | 1350 | 1370 | | | |
| Benson Sand | | | 1370 | 1420 | | | |
| Slate & Shells | | | 1420 | 1598 | | | |
| Lime | | | 1598 | 1641 | | | |
| Slate & Shells | | | 1641 | 2060 | | | |
| Lime | | | 2060 | 2220 | | | |
| Slate & Shells | | | 2220 | 2445 | | | |
| Lime | | | 2445 | 2700 | | | |
| Slate & Shells | | | 2700 | 2775 | | | |
| Lime | | | 2775 | 2900 | | | |
| Slate & Shells | | | 2900 | 3100 | | | |
| Shale | | | 3100 | 3159 | | | |
| Slate & Shells | | | 3159 | 3640 | | | |
| Shale | | | 3640 | 3995 | | | |
| Slate & Shells | | | 3995 | 4156 | | | |
| Lime | | | 4156 | 4230 | | | |
| Shale | | | 4230 | 4410 | | | |
| Tully Lime | | | 4410 | 4441 | | | |
| Shale | | | 4441 | 4666 | | | |
| Slate & Shells | | | 4666 | 4926 | | | |
| Shale | | | 4926 | 4941 | | | |
| Brown Break | | | 4941 | 4944 | | | |
| Onodago Line | | | 4944 | 4970 | | | |
| Chert | | | 4970 | 5100 | | | |
| Slate & Lime | | | 5100 | 5113 | | | |
| Oniskany Sand | | | 5113 | 5248 | | | |
| Heilderberg | | | 5248 | 5267 | | | |
| Total Depth | | | 5267' | | | | |



Test before Acidizing 8-12-53 was 58/10W-2"... 8-13-53 well was acidized with 1000 gals. 15% Acid against 970# Well pressure... Test after acidizing 50/10W-2-1/2"... Pick Up: 1 Min. 2 Min. 3 Min. 4 Min. 5 Min. 80# 110# 130# 155# 175# Well acidized on 8-14-53 with 300 gals 15% Acid against well pressure of 1000 Well tested 58/10W-1-1/2"... Pick Up: 1 Min. 2 Min. 3 Min. 4 Min. 5 Min. 80# 110# 130# 155# 175# 48 Hour Rock Pressure 1065#