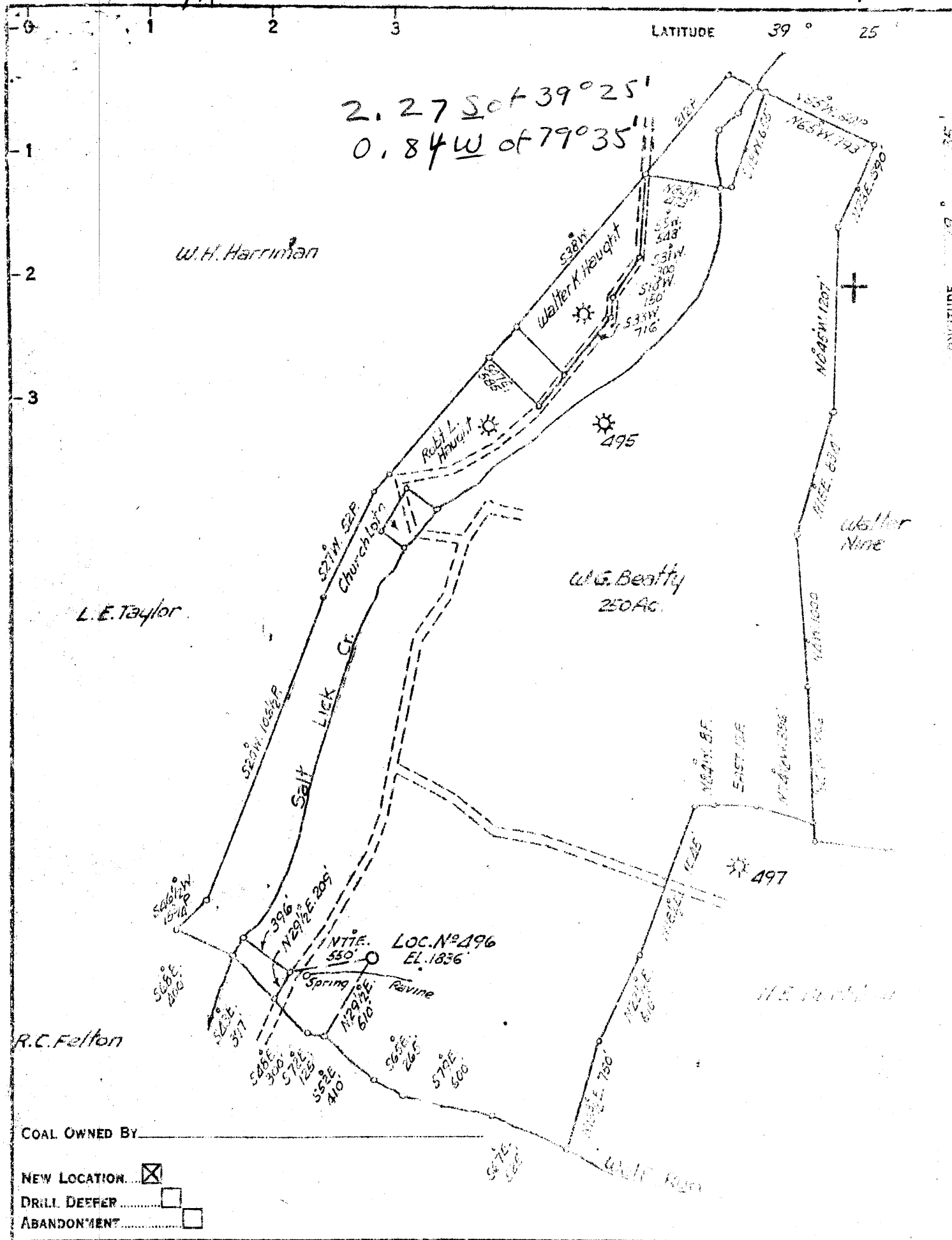


2.27 S of 39° 25'
0.84 W of 79° 35'



COAL OWNED BY _____

NEW LOCATION

DRILL DEEFER

ABANDONMENT

COMPANY Cumberland & Allegheny Gas Co.

ADDRESS 800 Union Trust Bldg. Pittsburgh Pa.

FARM W.G. Beatty

TRACT _____ ACRES 250 LEASE NO. 7719

WELL (FARM) NO. 2 SERIAL NO. 496

ELEVATION (SPIRIT LEVEL) 1836'

QUADRANGLE Kingwood

COUNTY Preston DISTRICT Union

ENGINEER Thos. G. Virgin E.L.

ENGINEER'S REGISTRATION NO. 1503

FILE NO. _____ DRAWING NO. Y-15-725

DATE Aug. 28, 1952 SCALE 1" = 900'

STATE OF WEST VIRGINIA
DEPARTMENT OF MINES
OIL AND GAS DIVISION
CHARLESTON

WELL LOCATION MAP

FILE NO. PREC-50

plugged 12/05/1953

+ DENOTES LOCATION OF WELL ON UNITED STATES TOPOGRAPHIC MAPS, SCALE 1 TO 62,500. LATITUDE AND LONGITUDE LINES BEING REPRESENTED BY BORDER LINES AS SHOWN.

— DENOTES ONE INCH SPACES ON BORDER LINE OF ORIGINAL TRACING.

6-0 280

Deep Well



STATE OF WEST VIRGINIA
DEPARTMENT OF MINES
OIL AND GAS DIVISION 4

Kingwood

WELL RECORD

Dry Gas

Permit No. PRES-50

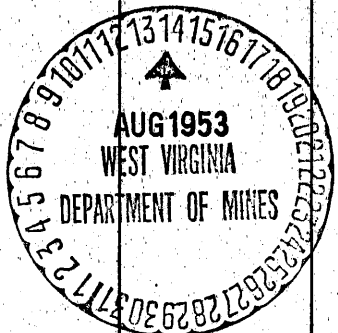
Oil or Gas Well Gas
(KIND)

Company CUMBERLAND AND ALLEGHENY GAS COMPANY
 Address 800 Union Trust Building, Pgh., Penna.
 Farm W. G. Beatty Acres 250
 Location (waters) _____
 Well No. 2-496 Elev. 1836
 District Union County Preston
 The surface of tract is owned in fee by _____
 Address _____
 Mineral rights are owned by _____
 Address _____
 Drilling commenced September 30, 1952
 Drilling completed July 31, 1953
 Date Shot _____ From _____ To _____
 With _____
 Open Flow 30/10ths Water in 1 Inch
 _____ /10ths Merc. in _____ Inch
 Volume 42,935 Cu. Ft.
 Rock Pressure 1410 lbs. _____ hrs.
 Oil _____ bbls., 1st 24 hrs.
 Fresh water _____ feet _____ feet
 Salt water _____ feet _____ feet

Casing and Tubing	Used in Drilling	Left in Well	Packers
Size			
16			Kind of Packer
18	18'1"		
10	462'8"		Size of
8 3/4	1606'11"		
6 3/4	4722'4"		Depth set
5 3/16			
8			Perf. top
2			Perf. bottom
Liners Used			Perf. top
			Perf. bottom

CASING CEMENTED _____ SIZE _____ No. Ft. _____ Date _____
 COAL WAS ENCOUNTERED AT _____ FEET _____ INCHES
 _____ FEET _____ INCHES FEET _____ INCHES
 _____ FEET _____ INCHES FEET _____ INCHES

Formation	Color	Hard or Soft	Top	Bottom	Oil, Gas or Water	Depth Found	Remarks
Space			0	8			
Slate Shale			8	70			
Lime			70	80			Samples 27 A
Slate & Shell			80	90			
Lime			90	100			
Slate & Shell			100	130			
Lime			130	147			
Slate & Shell			147	200			
Broken Lime			200	520			
Slate & Shells			520	1075			
Lime			1075	1150			
Slate & Shells			1150	1445			
Brown Shale			1445	1464			
✓ Benson Sand			1464	1480			
Broken Lime			1480	1565			
Slate & Shells			1565	3100			
White Slate			3100	3520			
Dark Slate			3520	3710			
Brown Shale			3710	4258			
✓ Tulley Lime			4258	4276			
Black Shale			4276	4696	4733	4900	5039
Brown Shale			4696	4716	1836	1836	1836
Black Shale			4716	4731			
✓ Brown Break			4731	4733	2897	3064	3203
✓ Onondago Lime			4733	4756			
✓ Chert Sand			4756	4890			
✓ Brown Break - <i>Needmore sh</i>			4890	4900			
✓ Criskany Sand			4900	5039			
✓ Lime - <i>Helderberg</i>			5039	5042			
Total Depth			5042				
Drove Lead Plug			4990				
Total Depth			4990				
				485			
							Water at 4980', 6 Bailers per hour Drove lead plug 4990
							Gas show 4960 - 4961' Gas show 4981 - 4983'
							3-31-53 Open Flow 6/10W-5/8" - Treated with 500 Gas 15% XFM-18 - Packer failed to hold - Removed packer and set up in casing



Formation	Color	Hard or Soft	Top	Bottom	Oil, Gas or Water	Depth Found	Remarks
			4				
							5-11-53 Well acidized with 1000 Gals 15% XFM-18 - Open flow gained 12,000 Cu. Ft. - Removed Baker packer and set Larkin
							5-19-53 Well Acidized with 3000 Gals. 15% XFM-18 - Gas tested 32/10W-5/8", After acid job and allowed to flow through Vents - Gas tested 30/10W-1"
							7-31-53 Final Test 30/10W-1" Sg Mcf
							Pick Up:
							1 Min. 3 Min. 5 Min.
							0# 1 Min. 2 Min.

Date August 12, 1953

APPROVED CUMBERLAND AND ALLEGHENY GAS COMPANY Owner

By *[Signature]*