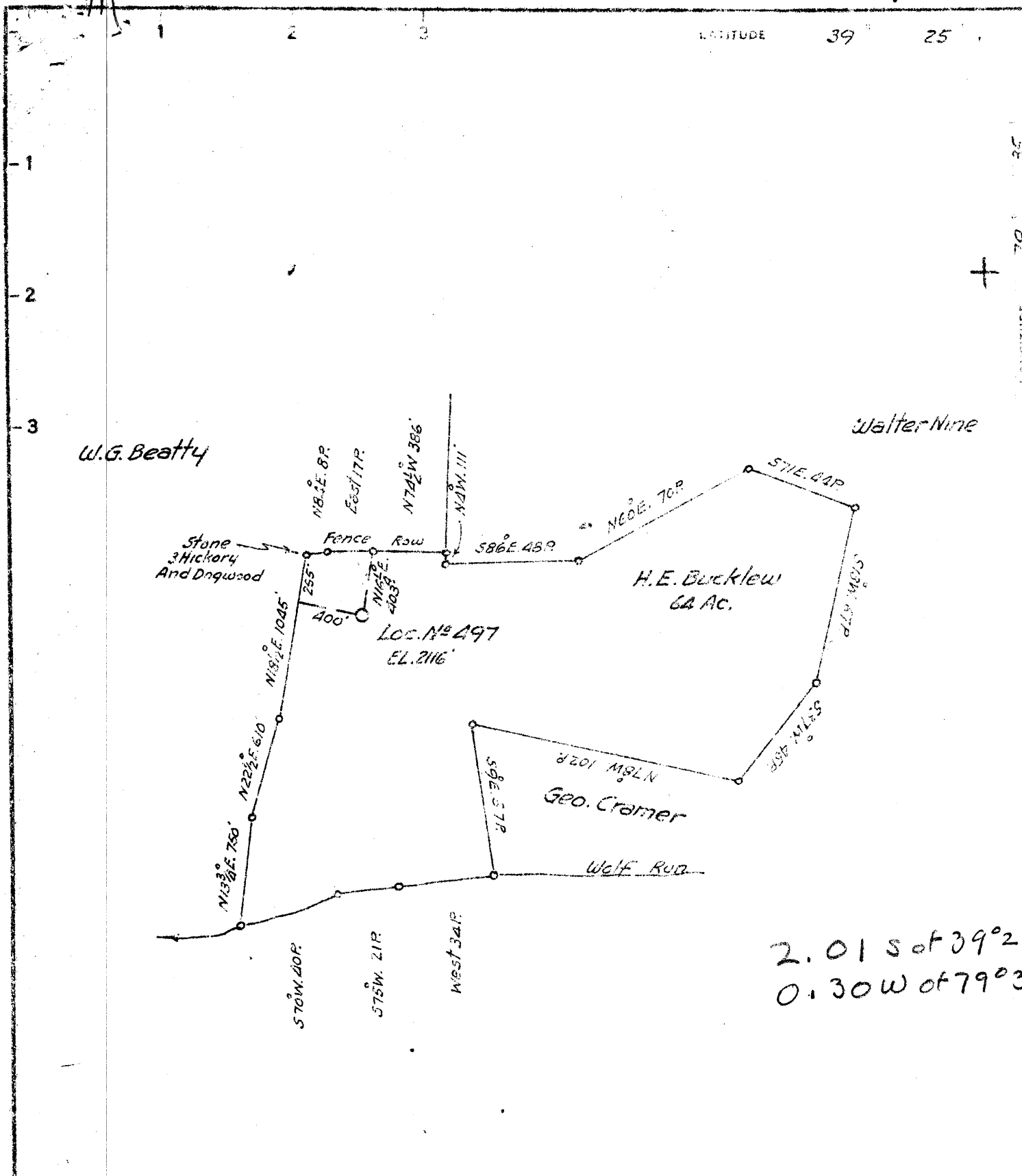


P

LATITUDE 39 25



2.01 S of 39° 25'
 0.30 W of 79° 35'

COAL OWNED BY _____

NEW LOCATION
 DRILL DEEPER
 ABANDONMENT

COMPANY Cumberland & Allegheny Gas Co.
 ADDRESS 800 Union Trust Bldg. Pittsburgh Pa.
 FARM H. E. Bucklew
 TRACT _____ ACRES 64 LEASE NO. 7707
 WELL (FARM) NO. 1 SERIAL NO. 497
 ELEVATION (SPIRIT LEVEL) 2116'
 QUADRANGLE Kingwood
 COUNTY Preston DISTRICT Union
 ENGINEER Thos E. Virgin E.L.
 ENGINEER'S REGISTRATION NO. 1523
 FILE NO. _____ DRAWING NO. Y-13-750
 DATE Aug 28, 1952 SCALE 1" = 800'

STATE OF WEST VIRGINIA
 DEPARTMENT OF MINES
 OIL AND GAS DIVISION
 CHARLESTON

WELL LOCATION MAP
 FILE NO. PRE5-51
PJA 11/27/1953

+ DENOTES LOCATION OF WELL ON UNITED STATES GEOLOGIC MAPS SCALE 1 TO 62,500. LATITUDE AND LONGITUDE LINES BEING REPRESENTED BY BORDER LINES AS SHOWN.
 - DENOTES ONE INCH SPACES ON BORDER LINE OF ORIGINAL TRACING.

6-0 270

Deep Well



STATE OF WEST VIRGINIA
DEPARTMENT OF MINES
OIL AND GAS DIVISION

WELL RECORD

Permit No. PRES-51

Oil or Gas Well Gas

(KIND)

Company Cumberland & Allegheny Gas Company
Address 800 Union Trust Bldg., Pgh., Penna.
Farm H. E. Bucklew Acres 64
Location (waters) 2116
Well No. 1-497 Elev. 3836
District Union County Preston
The surface of tract is owned in fee by H. E. & Clara Bucklew
R. D. #3, Terra Alta, West Virginia
Mineral rights are owned by H. E. & Clara Bucklew
R. D. #3, Terra Alta, West Virginia
Drilling commenced January 25, 1953
Drilling completed May 28, 1953
Date Shot From To
With
Open Flow 8/10ths Water in 5/8 Inch
10ths Merc. in Inch
Volume 8662 Cu. Ft.
Rock Pressure 1210 lbs. 48 hrs.
Oil bbls., 1st 24 hrs.
Fresh water feet feet
Salt water feet feet

Casing and Tubing	Used in Drilling	Left in Well	Packers
Size			
16			Kind of Packer
18	70'7"		
10	538'2"		Size of
8 1/2	1694'8"		
7	4946'4"		Depth set
5 8/16			
8			Perf. top
2			Perf. bottom
Liners Used			Perf. top
			Perf. bottom

CASING CEMENTED SIZE No. Ft. Date

COAL WAS ENCOUNTERED AT FEET INCHES
FEET INCHES FEET INCHES
FEET INCHES FEET INCHES

Formation	Color	Hard or Soft	Top	Bottom	Oil, Gas or Water	Depth Found	Remarks
Clay			0	5			
Slate & Shells			5	10			
Lime			10	101			
Slate & Shells			101	136			
Lime			136	275	4925	5164	5300
Slate & Shells			275	414	2116		
Lime			414	618			
Slate & Shells			618	1444			
Sand			1444	1464	2809	3048	3184
Slate			1464	1469			
Lime			1469	1508			
Slate & Shells			1508	1545			
Sand			1545	1588			
Slate & Shells			1588	1716			
Lime			1716	1720			
Slate & Shells			1720	4440			
Lime (Tull)			4440	4467			
Slate & Shells			4467	4923			
Brown Break			4923	4925			
Onondago Lime			4925	4969			
Chert Lime			4969	5115			
Broken Sand			5115	5164			
Oriskany Sand			5164	5300			
Heilderberg Line			5300	5303			
Total Depth			5303				

Gas tested 8/10W-5/8"

