

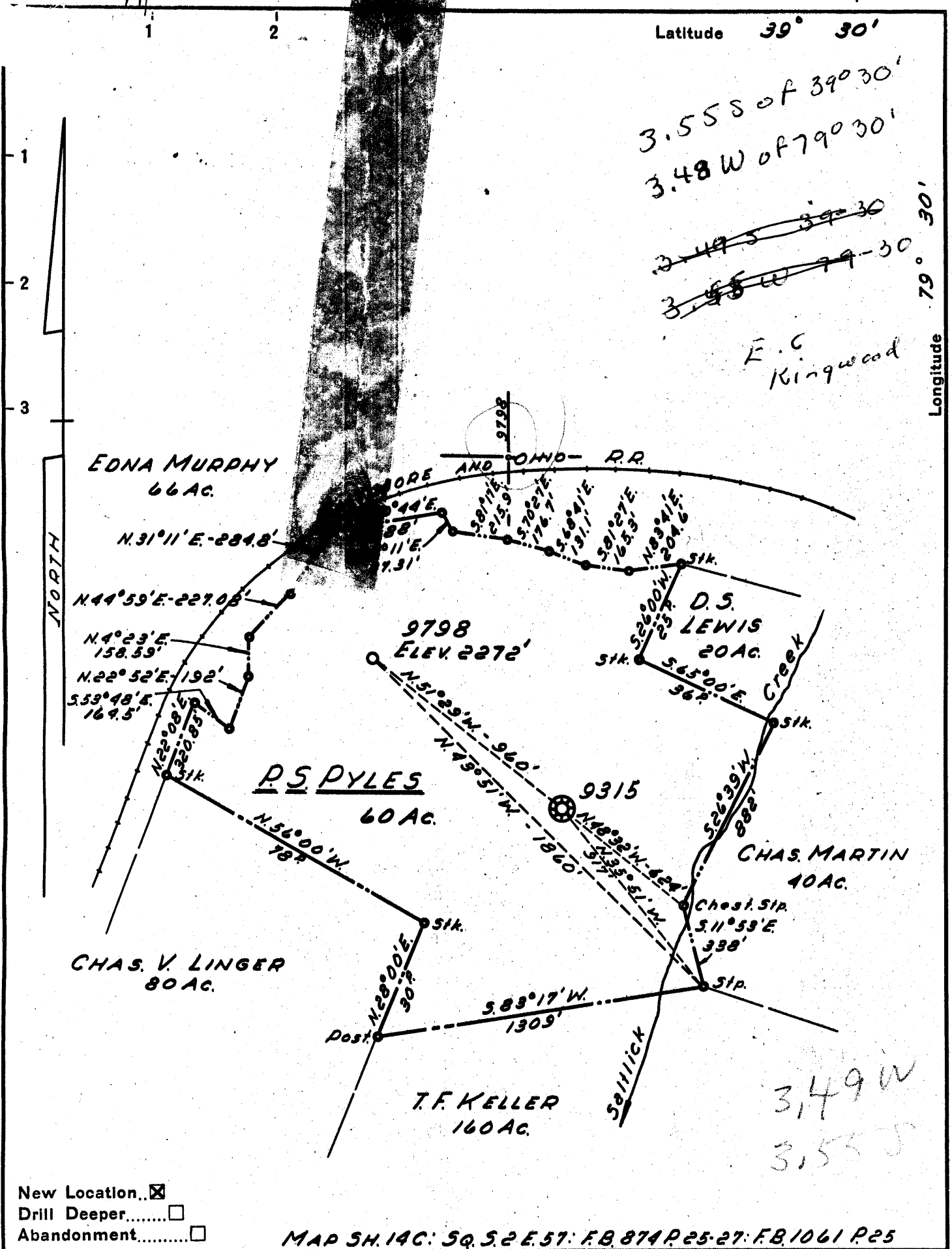
Latitude 39° 30'

3.55 S of 39° 30'  
3.48 W of 79° 30'

~~3.49 S of 39° 30'~~  
~~3.55 W of 79° 30'~~

F.C. Kingwood

Longitude 79° 30'



New Location..   
 Drill Deeper.....   
 Abandonment.....

MAP 5H. 14C: 5Q. 5. 2 E. 57: F.B. 874 P. 25-27: F.B. 1061 P. 25

Company	HOPE NATURAL GAS CO.
Address	CLARKSBURG, W.VA.
Farm	P.S. PYLES
Tract	Acres 60
Lease No.	54880
Well (Farm) No.	Serial No. 9798
Elevation (Spirit Level)	2272'
Quadrangle	KINGWOOD E.C.
County	PRESTON District PORTLAND
Engineer	W.M. Bowers
Engineer's Registration No.	900
File No.	Drawing No.
Date	DEC. 9, 1952 Scale 1" = 30' POLES

STATE OF WEST VIRGINIA  
 DEPARTMENT OF MINES  
 OIL AND GAS DIVISION  
 CHARLESTON

**WELL LOCATION MAP**  
 FILE NO. PRES-57

+ Denotes location of well on United States Topographic Maps, scale 1 to 62,500, latitude and longitude lines being represented by border lines as shown.

- Denotes one inch spaces on border line of original tracing.

5-0 270

Deep Well

duc.

STATE OF WEST VIRGINIA  
DEPARTMENT OF MINES  
OIL AND GAS DIVISION /Z

**WELL RECORD**

Permit No. PREMS-57

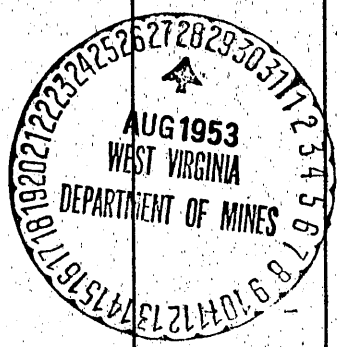
Oil or Gas Well Dry  
(X) ( ) ( )

Company Hope Natural Gas Company  
Address 445 West Main St., Clarksburg, W. Va.  
Farm P. S. Pyles Acres 60  
Location (waters) \_\_\_\_\_  
Well No. 9798 Elev. 2272'  
District Portland County Preston  
The surface of tract is owned in fee by \_\_\_\_\_  
Address \_\_\_\_\_  
Mineral rights are owned by \_\_\_\_\_  
Address \_\_\_\_\_  
Drilling commenced March 17, 1953  
Drilling completed August 6, 1953  
Date Shot 8-25-53 From 6081 To 6123  
With 160 Qts.  
Open Flow /10ths Water in \_\_\_\_\_ Inch  
/10ths Merc. in \_\_\_\_\_ Inch  
Volume \_\_\_\_\_ Cu. Ft.  
Rock Pressure \_\_\_\_\_ lbs. \_\_\_\_\_ hrs.  
Oil \_\_\_\_\_ bbls., 1st 24 hrs.  
Fresh water 25', 365' and feet 810' feet  
Salt water \_\_\_\_\_ feet \_\_\_\_\_ feet

Casing and Tubing	Used in Drilling	Left in Well	Packers
Size			Kind of Packer
16			
13	26	26	
10	624	624	Size of
8 1/4	2034	2034	
6 5/8	5826	5826	Depth set
5 3/16			
3			Perf. top
2			Perf. bottom
Liners Used			Perf. top
			Perf. bottom

8-5/8" Set in 40 bags cement  
CASING CEMENTED SIZE No. Ft. Date  
7" Cemented with 60 Bags Cement  
None recorded  
COAL WAS ENCOUNTERED AT FEET INCHES  
FEET INCHES FEET INCHES  
FEET INCHES FEET INCHES

Formation	Color	Hard or Soft	Top	Bottom	Oil, Gas or Water	Depth Found	Remarks
Surface			0	20			
Slate & Shells			10	90	Water	25	
Lime			90	360			
Lime (Broken)			360	1450	Water	365 & 810	
Slate & Shells			1450	1830			
Lime			1830	1895			
Slate			1895	1900			
Slate & Shells			1900	1932			
BENSON			1932	1962			
Slate			1962	2150			
Lime			2150	2200			
Slate	Grey		2200	2320			
Slate	Brown		2320	2400			
Slate	Grey		2400	2430			
Slate	Brown		2430	2500			
Slate & Shells			2500	2725			
Slate	Brown		2725	2750			
Slate	Grey		2750	2960			
Slate & Shells			2960	3490			
Lime	Pink		3490	3560			
Lime	Grey		3560	3770			
Slate & Shells (Brown)			3770	3970			
Slate & Shells (Grey)			3970	4430			
Shale	Brown		4430	4515			
Shale	Dark		4515	4540			
Shale	Dark Grey		4540	4590			
Shale	Brown		4590	4860			
Shale	Dark		4860	4952			
Shale	Limey		4952	5006			
Shale	Black		5006	5075			
TULLY LIME			5075	5125			
Shale	Brown		5125	5390			
Shale	Grey		5390	5510			
Shale Dark			5510	5622			
Lime	Dark		5622	5632			
Shale & Lime			5632	5700			
Lime	Dark - Onondaga?		5700	5750			
Lime	Light - Onondaga?		5750	5789			
Lime	Brown - Onondaga		5789	5825			



5700  
2272  
- 3428

Formation	Color	Hard or Soft	Top	Bottom	Oil, Gas or Water	Depth Found	Remarks
CHERT			5825	6006	Show gas	5885-5940-6001	
Shale	Dark	- NEEDMORE	6006	6026			
ORISKANY			6026	6168	Show gas	6089-6095-6110	
Helderberg			6168				
Total Depth				6259'			
			485				
						6026	
						2272	
						<u>        </u>	
						-3754	

Date August 26, 1953, 19

APPROVED HOPE NATURAL GAS COMPANY, Owner

By \_\_\_\_\_ (Title)