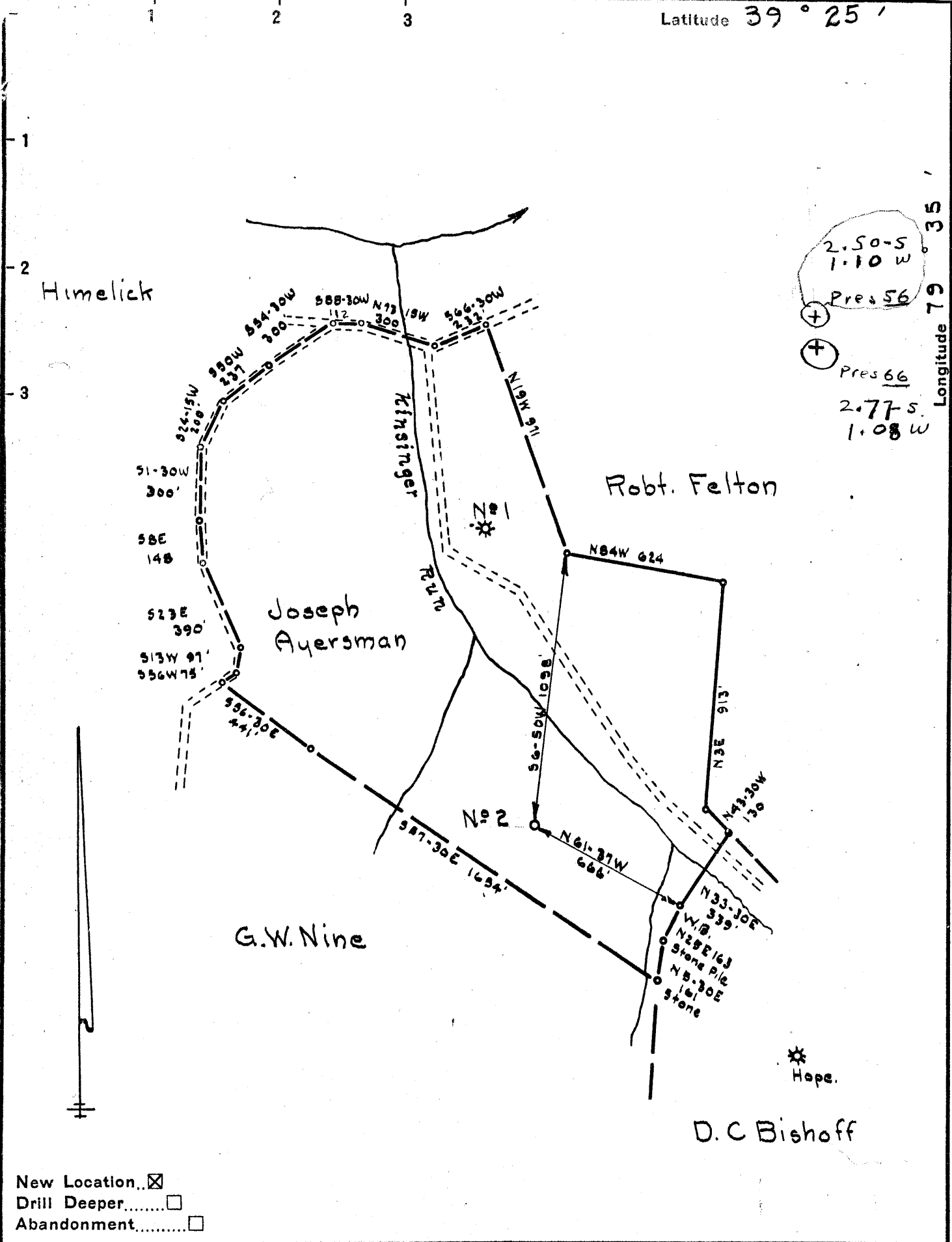


Latitude 39° 25'

P



2.50-S  
1.10 W  
Pres 56  
+  
+  
Pres 66  
2.77-S  
1.08 W

Longitude 79° 35'

- New Location..
- Drill Deeper.....
- Abandonment.....

Company Union Gas Co., No 2  
 Address Clarksburg W. Va.  
 Farm Joseph Ayersman  
 Tract \_\_\_\_\_ Acres 76 Lease No. \_\_\_\_\_  
 Well (Farm) No. 2 Serial No. \_\_\_\_\_  
 Elevation (Spirit Level) 1845.5 V.A.  
 Quadrangle Kingwood - C  
 County Preston District Union  
 Engineer James D. Jeffries  
 Engineer's Registration No. 1084  
 File No. 182/48 Drawing No. \_\_\_\_\_  
 Date 12-27-54 Scale 1" = 500'

STATE OF WEST VIRGINIA  
 DEPARTMENT OF MINES  
 OIL AND GAS DIVISION  
 CHARLESTON

**WELL LOCATION MAP**  
 FILE NO. PRES-66

+ Denotes location of well on United States Topographic Maps, scale 1 to 62,500, latitude and longitude lines being represented by border lines as shown.  
 - Denotes one inch spaces on border line of original tracing.

6-6 280

Deep well



STATE OF WEST VIRGINIA  
DEPARTMENT OF MINES  
OIL AND GAS DIVISION 5

Q. ad-angle Kingwood  
Permit No. PRESS-66

WELL RECORD

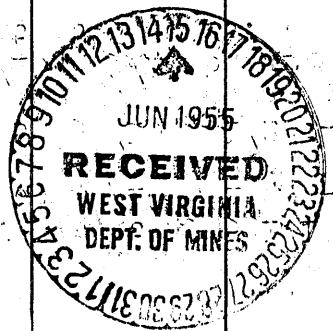
Oil or Gas Well Gas  
(KIND)

Company UNION GAS COMPANY NO. 2  
Address P. O. DRAWER 351, CLARKSBURG, W. VA.  
Farm JOSEPH AYERSMAN Acres 76  
Location (waters) SALT LICK  
Well No. No. 2 Elev. 1845.5 VA.  
District UNION County PRESTON  
The surface of tract is owned in fee by JOSEPH AYERSMAN  
R.F.D.#3 Address Terra Alta, W. Va.  
Mineral rights are owned by Same  
Address \_\_\_\_\_  
Drilling commenced February 28, 1955.  
Drilling completed June 8, 1955  
Date Shot 6/10/55 From 5097 To 4997  
With 800# Gelatine  
Open Flow \_\_\_\_\_ /10ths Water in \_\_\_\_\_ Inch  
63 /10ths Merc. in 2" Inch  
Volume 1,235,000 Cu. Ft.  
Rock Pressure 1720# lbs. 13 hrs.  
Oil \_\_\_\_\_ bbls., 1st 24 hrs.  
Fresh water \_\_\_\_\_ feet \_\_\_\_\_ feet  
Salt water \_\_\_\_\_ feet \_\_\_\_\_ feet

Casing and Tubing	Used in Drilling	Left in Well	Packers
Size			Kind of Packer
13	39'	39'	
10	510'	510'	Size of
8 1/4	1750'	1750'	Depth set
6 5/8	4850'	4850'	
5 3/16			Perf. top
3 (7" Pipe cemented in well with 50 bags cement.)			Perf. bottom
Liners Used			Perf. top
			Perf. bottom

CASING CEMENTED SIZE 7" No. Ft. 600' Date May 16, 1955  
COAL WAS ENCOUNTERED AT \_\_\_\_\_ FEET \_\_\_\_\_ INCHES  
\_\_\_\_\_ FEET \_\_\_\_\_ INCHES  
\_\_\_\_\_ FEET \_\_\_\_\_ INCHES

Formation	Color	Hard or Soft	Top	Bottom	Oil, Gas or Water	Depth Found	Remarks
Soil			0	7			
Lime	Light		7	20			
Lime	Brown		20	28			
Lime	Gritty		28	62	Water at	115 to 120	
Lime			62	140	Water	145 to 150	
Sand	Gray		140	215		(2 Bailers)	
Slate & Shells			215	300	Water	250 (Hole Full)	
Lime	Faulty & Slick		300	345			
Lime			345	440			
Slate & Shells			440	535			
Lime		Gritty	535	580			
Sand			580	660			
Lime			660	670			
Slate & Shells			670	700			
Sand			700	725			
Gray Limey Shale			725	746			
Sand			746	760			
Slate & Shells			760	1050			
Slate & Shells			1050	1470			
Sand	Gray		1470	1495			
Lime		Gritty	1495	1568			
Sand	Brown		1568	1620			
Slate		Gritty	1620	1720			
Lime			1720	1750			
Slate		Muddy	1750	1875			
Dark Fault			1875	1945			
Slate & Shells	(Gray)		1945	2465	Blow Out at 2755		
Slate & Shells	Dark		2465	2635			



Formation	Color	Hard or Soft	Top <sup>5</sup>	Bottom	Oil, Gas or Water	Depth Found	Remarks
Lime	Gray		2635	3185			
Shale	Brown		3185	3210			
Lime	Muddy		3210	3705			
Shale	Brown		3705	4040			
Lime	Dark	Hard	4040	4060			
Slate & Shells			4060	4140			
Lime	Light		4140	4170			
Slate	Brown	Dark	4170	4296			
Lime	Tulley		4296	4325			
Slate	Dark		4325	4457			
Limey Hard	Brown	Shale	4457	4705			
Lime	Dark	Broken	4705	4745			
Lime		Hard	4745	4825			
Brown Break			4825	4825			
Lime	Dark		4825	4844			Show of Gas at 4905 1/10 W 1/4"
Chart	Light		4844	4890			Gas tests 40/10 W 1/4" - 4997
Chart	Dark		4890	4945			
Chart	Broken		4945	4982			Gas tests 58/10 W 1/2" - 4994
Break			4982	4992			
Sand	Oriskany		4992	5110			Gas 32/10 W 3/4" before running cement at 5000 ft. (10 bgs.)
Lime			5110	5173			
Total depth			5173				
Gas Pays:			4900	4905	2/10 W 1/4"	693	
			4992	4994	58/10 W 1/2"		
			4997	5000	32/10 W 3/4"		
			5000	5002	43/10 W 3/4"		
			5002	5005	20/10 W 3/4"		
			5005	5007	6/10 M 1"		
			5007	5009	46/10 M 1"		
			5009	5017	51/10 M 1"		
			5016	5018	60/10 M 1"	222 M	
			5020	5023	32/10 M 1 1/4"		
			5042	5044	34/10 M 1 1/4"		
			5044	5048	36/10 M 1 1/4"		
			5064	5067	38/10 M 1 1/4"	144 M Test	
			5080	5084	40/10 M 1 1/4"		
			5084	5088	42/10 M 1 1/4"		
			5088	5093	44/10 M 1 1/4"	210 M Test	
			4825	4992	5110		
			4846	1846	1846		
			2979	3146	3264		

Date June 14, 1955, 19

APPROVED UNION GAS COMPANY NO. 2, Owner

By