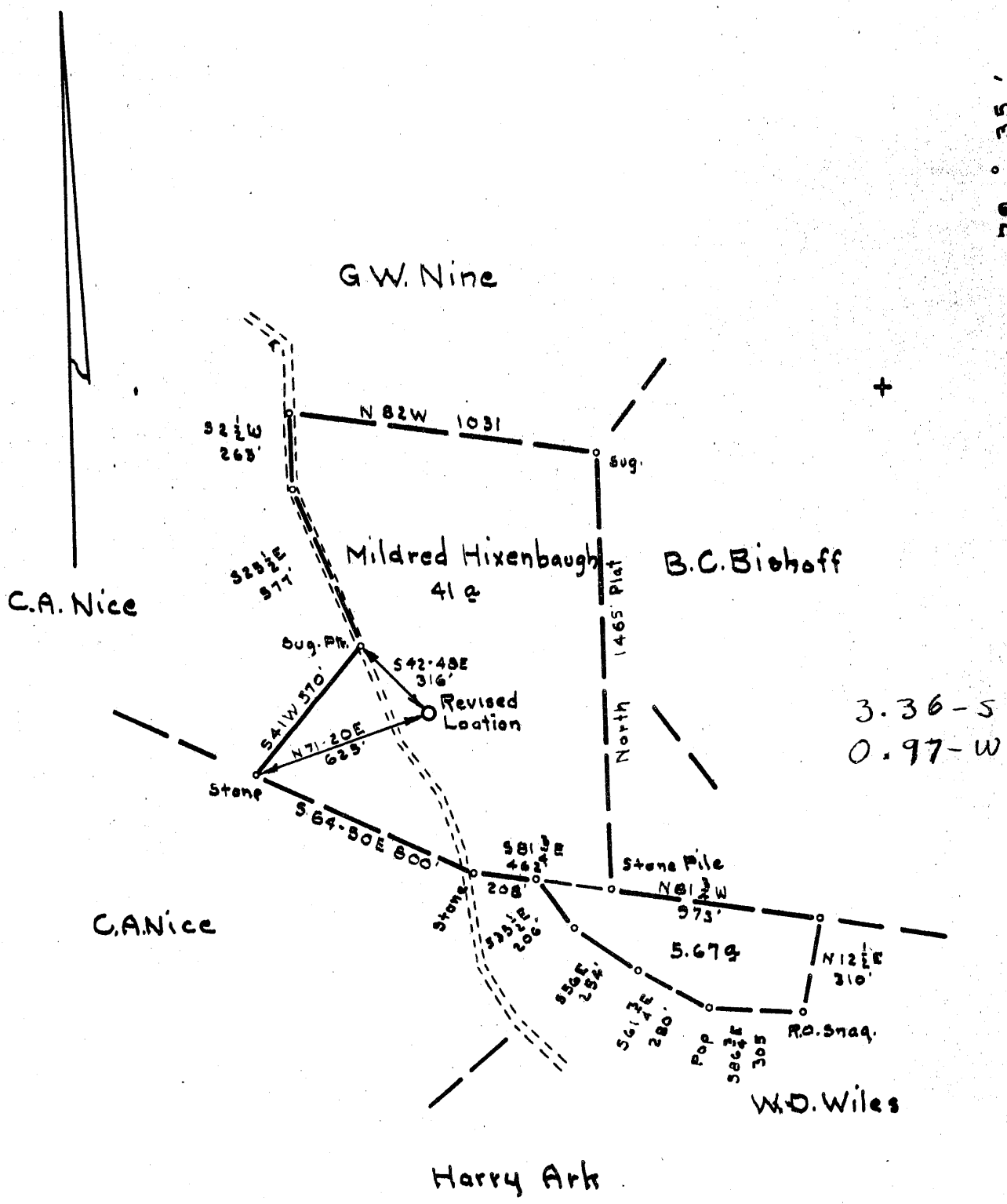


Latitude 39° 25'

Longitude 79° 35'



- New Location...
- Drill Deeper.....
- Abandonment.....

Revised Location

Company Union Gas Co.
 Address Clarksburg, W.Va.
 Farm Mildred Hixenbaugh
 Tract Acres 47 Lease No. _____
 Well (Farm) No. 1 Serial No. _____
 Elevation (Spirit Level) 2338 Y.A.
 Quadrangle Kingwood - C
 County Preston District Union
 Engineer James D. Jeffries
 Engineer's Registration No. 1084
 File No. 176/145 Drawing No. _____
 Date 1-5-56 Scale 1" = 500'

STATE OF WEST VIRGINIA
 DEPARTMENT OF MINES
 OIL AND GAS DIVISION
 CHARLESTON

WELL LOCATION MAP
 FILE NO. PRES-73-REVISED

- + Denotes location of well on United States Topographic Maps, scale 1 to 62,500, latitude and longitude lines being represented by border lines as shown.
- Denotes one inch spaces on border line of original tracing.

5-C 270

Deepwell



STATE OF WEST VIRGINIA
DEPARTMENT OF MINES
OIL AND GAS DIVISION / 0

Quadrangle Kingwood

Permit No. PRES-73-R

WELL RECORD

Oil or Gas Well Gas
(KIND)

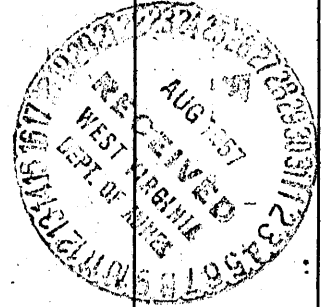
Company UNION GAS COMPANY NO. 3
Address P. O. DRAWER 351, CLARKSBURG, W. VA.
Farm MILDRED HIXENBAUGH Acres 47
Location (waters) _____
Well No. ONE Elev. 2338 VA
District UNION County PRESTON
The surface of tract is owned in fee by _____
Address _____
Mineral rights are owned by Mary V. Sheets, et al
Address West Milford, W. Va.
Drilling commenced November 21, 1956
Drilling completed April 26, 1957
Date Shot 8/12/57 From 5701 To 5601
With 1000# Gal.

Casing and Tubing	Used in Drilling	Left in Well	Packers
Size			
16			Kind of Packer _____
13	<u>24'</u>	<u>24'</u>	
10	<u>605'</u>	<u>605'</u>	Size of _____
8 3/4	<u>2210'</u>	<u>2210'</u>	
6 3/4	<u>5428'</u>	<u>5428'</u>	Depth set _____
5 3/16			
3			Perf. top _____
2			Perf. bottom _____
Liners Used			Perf. top _____
			Perf. bottom _____

Open Flow _____ /10ths Water in _____ Inch
160 /10ths Merc. in 1 1/4" Inch
Volume 533 M Cu. Ft.
Rock Pressure 2115# lbs. 24 hrs.
Oil _____ bbls., 1st 24 hrs.
Fresh water _____ feet
Salt water _____ feet

CASING CEMENTED _____ SIZE 8" No. Ft. 40' Date _____
7" Pipe Cemented in well 250'
COAL WAS ENCOUNTERED AT _____ FEET _____ INCHES
_____ FEET _____ INCHES FEET _____ INCHES
_____ FEET _____ INCHES FEET _____ INCHES

Formation	Color	Hard or Soft	Top	Bottom	Oil, Gas or Water	Depth Found	Remarks
Clay			0	8	24 ft. of 13" Pipe Water at 30 ft. 2 Bailers water pr. hr. at 66'		
Slate & S.			8	24			
Lime			24	90			
Slate & S.			90	125			
Lime			125	200			
Slate & S.			200	225			
Sand			225	239			
Slate & S.			239	255			
Lime			255	289			
Slate			289	454			
Lime			454	484			
Slate & Shells			484	604			
Lime			604	733	Run 605 ft. of 10" pipe		
Slate & Shells			733	740			
Sand			740	795			
Slate & Shells			795	812			
Lime		Gritty	812	824			
Slate & Shells			824	842			
Lime			842	1080			
Sand			1080	1155			
Lime			1155	1165			
Slate & Shells			1165	1258			
Lime			1258	1283			
Slate & Shells			1283	1450			
Lime			1450	1607			
Slate & Shells			1607	1680			
Sand			1680	1695			
Slate & Shells			1695	1980			
Sand	Brown		1980	1990			
Slate & Shells			1990	2069			
Lime		Gritty	2069	2265	Reduced hole from 10" to 8" at 2210'		
Benson Sand			2265	2310			
Lime		Gritty	2310	2496	Set 25 feet of stone bridge at 2235 to 2210 and run 2210' of 8" casing cemented with 12 sks. cement dumped in hole and pipe set down in cement.		
Sand			2496	2510			



(Over)

Formation	Color	Hard or Soft	Top /0	Bottom	Oil, Gas or Water	Depth Found	Remarks
Lime			2510	2650			
Slate & Shells			2650	3072			
Lime			3072	4400			
Shale	Brown		4400	4510			
Lime	Black		4510	4565			
Shale	Brown		4565	4733			
Lime			4733	4755			
Slate	Brown		4755	4916			
Lime			4916	4933			
Shale	Brown		4933	4965			
Tulley Lime			4965	4990			
Slate	Black		4990	5054			
Lime			5054	5070			
Shale	Black		5070	5214			
Lime	Black		5214	5253			
Slate	Black		5253	5330			
Lime	Black		5330	5400			
Brown Break			5400	5401			
Ondaga Lime			5401	5424			
Chart Sand			5424	5562			
Slate		Soft	5562	5574			
Oriskany Sand			5574	5698			
Total Depth			5701				
Well tested after shot -			160/10 M.	1-1/4"	533 M		
						5401	5574
						2336	2338
						3063	3236
						5	

Chart Formation:
 Gas at 5485' - 21/10 W 1/4" 2M
 " " 5514' to 5516' 50/10 W 1/4"

Oriskany Formation: (Gas)
 5586' to 5587' - 22/10 W 1" 37M
 5587' to 5590' - 56/10 W 1"
 5590' to 5591' - 6/10 W 2"
 5591' to 5592' - 8/10 W 2" 99M
 5592' to 5594' - 9/10 W 2"
 5594' to 5595' - 10/10 W 2" 99M
 5595' to 5599' - 10/10 M 1-1/4"
 5600' to 5602' - 21/10 M 1"
 5606' to 5609' - 26/10 M 1"
 5614' to 5616' - 28/10 M 1"
 5617' to 5619' - 32/10 M 1" 162M
 5646' to 5648' - 38/10 M 1"
 5665' to 5668' - 42/10 M 1" 188M

Date August 26, 19 57
 APPROVED UNION GAS COMPANY NO. 3, Owner
 By [Signature] (Title)