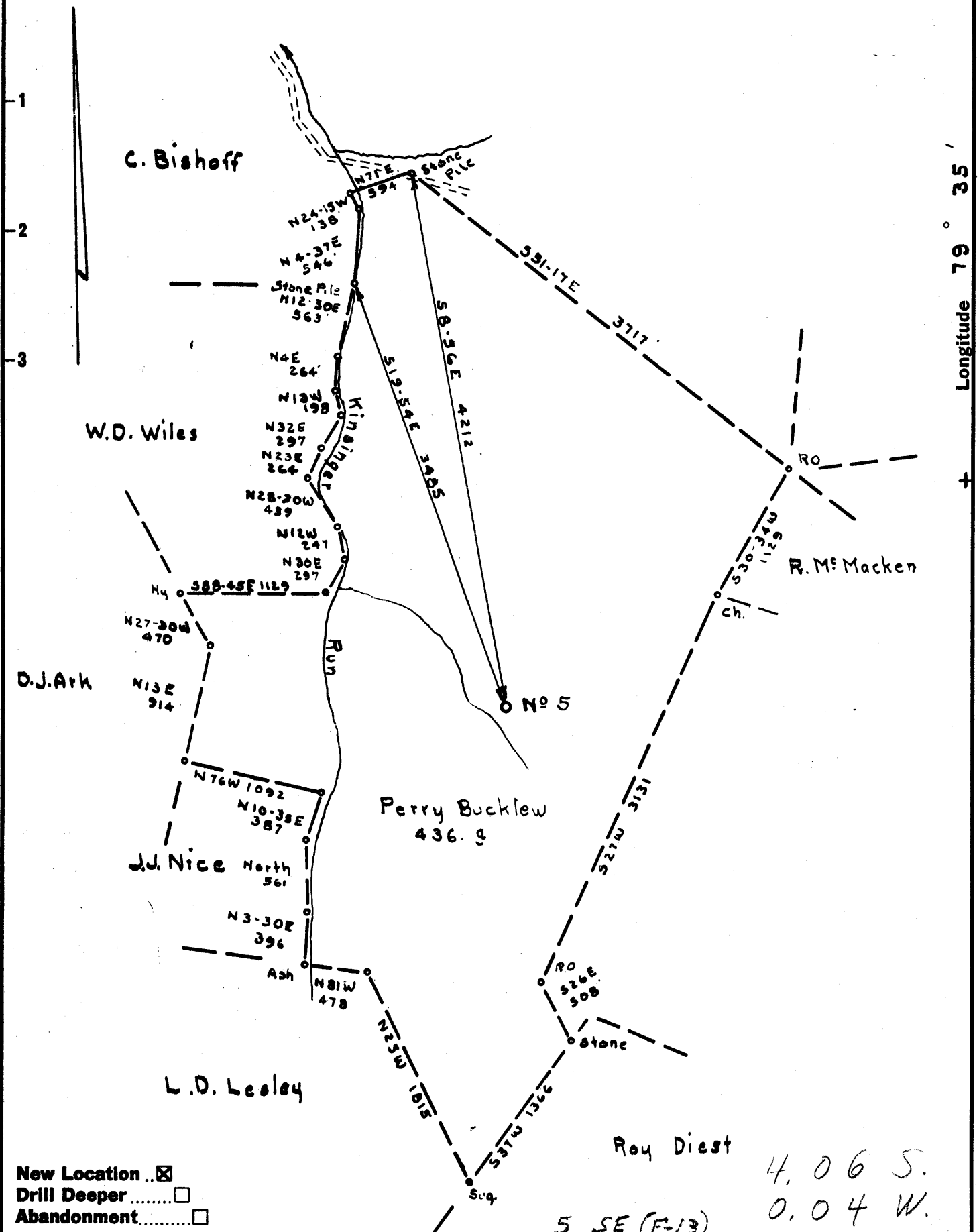


Latitude 39° 25'

Longitude 79° 35'



New Location
 Drill Deeper
 Abandonment

Roy Diest 4,065.
 0.04 W.
 5 SE (F-13)

Company Union Gas Co.
 Address Clarksburg W. Va.
 Farm Perry Bucklew
 Tract _____ Acres 436 Lease No. _____
 Well (Farm) No. 1 Serial No. 5
 Elevation (Spirit Level) 2337
 Quadrangle Kingwood C SE
 County Preston District Union
 Engineer J. D. Jeffries
 Engineer's Registration No. 1084
 File No. 192/94 Drawing No. _____
 Date 11-1-58 Scale 1"=1000'

STATE OF WEST VIRGINIA
 DEPARTMENT OF MINES
 OIL AND GAS DIVISION
 CHARLESTON

WELL LOCATION MAP
 FILE NO. Pres-79

+ Denotes location of well on United States Topographic Maps, scale 1 to 62,500, latitude and longitude lines being represented by border lines as shown.
 - Denotes one inch spaces on border line of original tracing.

6-0 280 (Not a deep Well)



STATE OF WEST VIRGINIA
DEPARTMENT OF MINES
OIL AND GAS DIVISION / 8

Quadrangle Kingwood

Permit No. PRES-79

WELL RECORD

Oil or Gas Well Dry
(KIND)

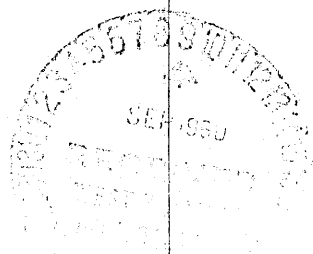
Company UNION GAS COMPANY
Address P. O. DRAWER 351, CLARKSBURG, W. VA.
Farm PERRY BUCKLEW Acres 436
Location (waters) _____
Well No. One Elev. 2337
District UNION County PRESTON
The surface of tract is owned in fee by Perry Bucklew
Rt. #1-c/o Harold Singal, Newburg, W. Va.
Mineral rights are owned by Same
Address _____
Drilling commenced February 2, 1959
Drilling completed September 6, 1960
Date Shot _____ From _____ To _____
With _____
Open Flow _____ /10ths Water in _____ Inch
_____ /10ths Merc. in _____ Inch
Volume _____ Cu. Ft.
Rock Pressure _____ lbs. _____ hrs.
Oil _____ bbls., 1st 24 hrs.
WELL ACIDIZED _____
WELL FRACTURED _____

Casing and Tubing	Used in Drilling	Left in Well	Packers
Size			Kind of Packer
16			
13			
10	<u>600'-9"</u>		Size of
8 1/4	<u>2371'</u>		Depth set
6 5/8			
5 3/16			
3 <u>Will attempt to pull</u>			Perf. top
2 <u>both 8 & 10" Pipe when</u>			Perf. bottom
Liners Used <u>Well is plugged</u>			Perf. top
			Perf. bottom

CASING CEMENTED _____ SIZE _____ No. Ft. _____ Date _____
COAL WAS ENCOUNTERED AT _____ FEET _____ INCHES
_____ FEET _____ INCHES FEET _____ INCHES
_____ FEET _____ INCHES FEET _____ INCHES

RESULT AFTER TREATMENT _____
ROCK PRESSURE AFTER TREATMENT _____
Fresh Water _____ Feet Salt Water _____ Feet

Formation	Color	Hard or Soft	Top	Bottom	Oil, Gas or Water	Depth	Remarks
Clay			0	10			
Gravel			10	25			
Sand			25	82			
Lime	Red		82	94			
Sand			94	120			
Lime			120	124			Water 73' - 2 bbls pr. hr.
Lime	Red		124	180			Water 112' - Hole Full
Gritty Lime			180	235			
Slate			235	244			
Lime			244	380			
Sand			380	390			Smell of black oil at 465'
Slate			390	394			
Lime			394	403			
Sand			403	410			
Slate & Shells			410	422			
Lime			422	468			
Slate & Shells			468	485			
Lime			485	509			
Slate & Shells			509	530			
Gritty Lime			530	621			
Sand			621	645			
Slate			645	650			
Lime	Pink		650	695			
Slate			695	700			
Sand			700	758			
Slate & Shells			758	772			
Lime			772	790			
Slate & Shells			790	885			
Sand			885	916			



Formation	Color	Hard or Soft	Top / 8	Bottom	Oil, Gas or Water	Depth Found	Remarks
Slate			916	927			
Lime			927	947			
Slate & Shells			947	1028			
Lime			1028	1048			
Slate & Shells			1048	1097			
Sand			1097	1127			
Slate & Shells			1127	1370			
Lime			1370	1470			
Slate & Shells			1470	1565			
Lime			1565	1580			
Sand			1580	1625			
Slate & Shells			1625	1647			
Lime			1647	1678			
Sand			1678	1733			
Gritty Lime			1733	1970			
Slate & Shells			1970	1995			
Lime			1995	2107			
Slate			2107	2120			
Gritty Lime			2120	2194			
Sand			2194	2209			
Lime			2209	2270			
Sand	Brown		2270	2281			
Lime			2281	2532			
Gritty Lime			2532	2609			
Slate & Shells			2609	2706			
Lime			2706	2730			
Slate & Shells			2730	2880			
Lime			2880	2910			
Slate & Shells			2910	2960			
Lime			2960	3013			
Slate & Shells			3013	3030			
Benson Sand			3030	3070			
Slate & Shells			3070	3865			
Lime			3865	3886			
Slate & Shells			3886	4010			
Lime			4010	4065			
Slate & Shells			4065	4190			
Lime			4190	4221			
Slate & Shells			4221	4407			
Lime			4407	4480			
Slate & Shells			4480	4644			
Lime			4644	5100			
Slate & Shells (Black)			5100	5265			
Lime			5265	5655			
Slate			5655	5679			
Lime			5679	5698			
Slate			5698	5804			
Lime			5804	5881			
Slate			5881	5905			
Lime			5905	5980			
Shale	Black		5980	6020			
Lime	Black		6020	6062			
Slate	Black		6062	6118			
Bottom of Hole				6118			

Left in Hole:

Top First String Tools 5944
 " Second " " 5903
 " Third " " 5894

Date September 8, 1960

APPROVED UNION GAS COMPANY, Owner

By [Signature] (Title)