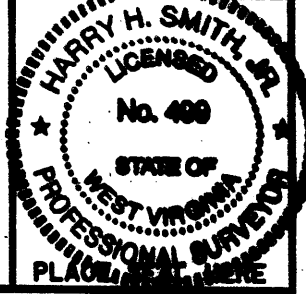


Notes:
 This Map is For
 Well Location Only &
 Does Not Represent
 A Complete Property Survey.
 Location Determined By
 Differential GPS

(+) DENOTES LOCATION OF WELL ON UNITED STATES TOPOGRAPHIC MAPS (7 1/2)

FILE NO. _____
 DRAWING NO. 7507
 SCALE 1" = 400'
 MINIMUM DEGREE OF
 ACCURACY 1/200'
 PROVEN SOURCE OF
 ELEVATION Existing Wells
Concrete Pads

I THE UNDERSIGNED, HEREBY CERTIFY THAT
 THIS PLAT IS CORRECT TO THE BEST OF MY
 KNOWLEDGE AND BELIEF AND SHOWS ALL THE
 INFORMATION REQUIRED BY LAW AND THE REGU-
 LATIONS ISSUED AND PRESCRIBED BY THE DEPART-
 MENT OF ENERGY.
 (SIGNED) Harry H. Smith, Jr.
 R.P.E. _____ L.L.S. 499



WEST VIRGINIA
 DIVISION OF ENVIRONMENTAL PROTECTION
 OFFICE OF OIL AND GAS
 #10 McJUNKIN ROAD
 NITRO, WEST VIRGINIA 25143-2506



DATE September 26, 1997
 OPERATOR'S WELL NO. 7507
 API WELL NO. 47 077 00098-W
 STATE COUNTY PERMIT

WELL TYPE: OIL GAS LIQUID INJECTION WASTE DISPOSAL
 (OF "GAS") PRODUCTION STORAGE DEEP SHALLOW

LOCATION: ELEVATION 2800' WATER SHED Kinsinger Run Of Salt Lick Creek
 DISTRICT Union COUNTY Froster
 QUADRANGLE Alicia COORDINATES LAT. 39°22'30" LONG. 79°35'43"

SURFACE OWNER Wayne C. Lewis ACREAGE 72.17
 OIL & GAS ROYALTY OWNER Columbia Gas Trans. Corp. LEASE ACREAGE 72.75
 COAL OWNER Columbia Gas Transmission Corporation LEASE NO. 1050804

PROPOSED WORK: DRILL CONVERT DRILL DEEPER REDRILL FRACTURE OR
 STIMULATE PLUG OFF OLD FORMATION PERFORATE NEW
 FORMATION OTHER PHYSICAL CHANGE IN WELL (SPECIFY) Storage Recardition
Well drilled in 1962 by Atlantic Seaboard Co. C.R.D. is going to be work
9 hrs. some brackish

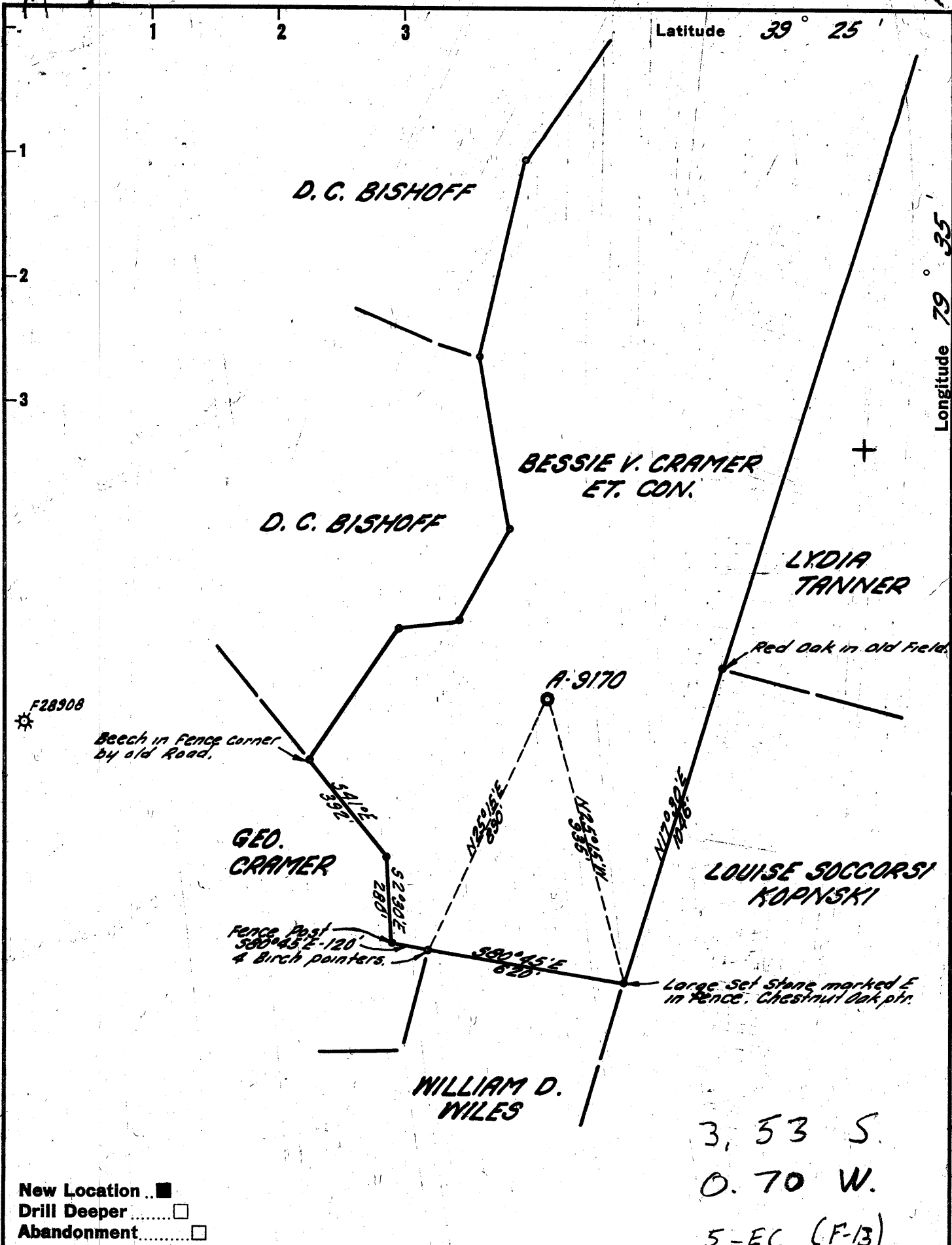
PLUG AND ABANDON CONVERT AND REPLUG _____
 TARGET FORMATION Coal ESTIMATED DEPTH 6,030'
 WELL OPERATOR COLUMBIA GAS TRANSMISSION CORP DESIGNATED AGENT RICHARD L. COTY
 ADDRESS PO Box 1273, Charleston, WV 25325-1273 ADDRESS PO BOX 1273 CHARLESTON, WV 25325-1273

Deep well

FORM 750

COUNTY NAME
FROSTER

PERMIT
92



New Location
 Drill Deeper
 Abandonment

3, 53 S.
 0.70 W.
 5-EC (F-13)

Company ATLANTIC SEABOARD CORP.
 Address CHARLESTON W.VA.
 Farm BESSIE V. CRAMER ET. CON.
 Tract _____ Acres 74 Lease No. AS-504
 Well (Farm) No. _____ Serial No. A-9170
 Elevation (Spirit Level) 2390.11'
 Quadrangle KINGWOOD - C
 County PRESTON District UNION
 Engineer Jaybert R. Varell
 Engineer's Registration No. 2529
 File No. 172-29 Drawing No. _____
 Date 3-29-62 Scale 1" = 400'

STATE OF WEST VIRGINIA
 DEPARTMENT OF MINES
 OIL AND GAS DIVISION
 CHARLESTON

WELL LOCATION MAP
 FILE NO. PRES-98

+ Denotes location of well on United States Topographic Maps, scale 1 to 62,500, latitude and longitude lines being represented by border lines as shown.
 - Denotes one inch spaces on border line of original tracing.

H-E 150 IMPERIAL TRACING CLOTH T.M. 00048

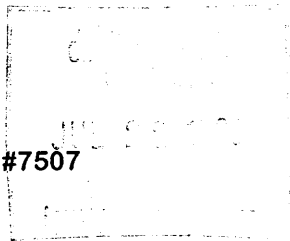
3 Samples 4500 - 6030' - 66290' Deep Well

WR-35

15-Apr-98
API # 47- 077-00098 W

State of West Virginia
Division of Environmental Protection
Section of Oil and Gas

Well Operator's Report of Well Work



Farm name: Wayne C. Lewis Operator well No.: TAS STG. #7507

LOCATION: Elevation: 2,390.00 Quadrangle: AURORA

District: UNION County: PRESTON
Latitude: 3,450 Feet South of 39 Deg. 22 Min. 30 Sec.
Longitude: 3,400 Feet West of 79 Deg. 35 Min. 0 Sec.

Company: COLUMBIA GAS TRANSMISSION
P.O. BOX 1273
CHARLESTON, WV 25325-1273

Agent: RICHARD L. COTY
Inspector: PHILLIP TRACY
Permit Issued: 04/15/98
Well work Commenced: 05-20-98
Well work Completed: 06-03-98
Verbal Plugging
Permission granted on: _____
Rotary _____ Cable _____ Rig _____
Total Depth (feet) ORIG. TD 6,035' PB TD @ 5,920'
Fresh water depths (ft) See Original
Salt water depths (ft) See Previous
Is coal being mined in area (Y/N) ? N
Coal Depths (ft) : See Previous

Casing & Tubing Size	Used in Drilling	Left in Well	Cement Fill Up Cu. Ft.
STIMULATION; SEE OPPOSITE SIDE FOR DETAILS			

OPEN FLOW DATA

Producing formation Huntersville Chert & Oriskany Pay zone depth (ft) 5651'-5785'; 5815'-5944'
Gas : Initial open flow 2025 MCF/d Oil : Initial open flow _____ Bbl/d
Final open flow N/A MCF/d Final open flow _____ Bbl/d
Time of open flow between initial and final tests _____ Hours
Static rock Pressure 1684 psig (surface pressure) after _____ Hours

Second producing formation _____ Pay zone depth (ft) _____
Gas : Initial open flow _____ MCF/d Oil : Initial open flow _____ Bbl/d
Final open flow _____ MCF/d Final open flow _____ Bbl/d
Time of open flow between initial and final tests _____ Hours
Static rock Pressure _____ psig (surface pressure) after _____ Hours

NOTE: ON BACK OF THIS FORM PUT THE FOLLOWING: 1). DETAILS OF PERFORATED INTERVALS, FRACTURING OR STIMULATING, PHYSICAL CHANGE, ETC. 2). THE WELL LOG WHICH IS A SYSTEMATIC DETAILED GEOLOGICAL RECORD OF ALL FORMATIONS, INCLUDING COAL ENCOUNTERED BY THE WELLBORE.

For: COLUMBIA GAS TRANSMISSION CORP.

By: W.H. Faaker
Date: 7/20/98

PRE 0098W

WR-35

15-Apr-98

API # 47- 077-00098 W

State of West Virginia
Division of Environmental Protection
Section of Oil and Gas

Well Operator's Report of Well Work

- Western Atlas was moved in and rigged up on 05-21-98. The well was logged with a GR/CCL to a LTD of 5,949'. Historical records indicate a cast iron plug set @ 5,920'.
- The well 4-1/2" casing was re-perforated w/6 SPF. Run #1, 5,889-1/2' to 5,909-1/2'; Run #2, 5,876' to 5,888'; Run #3, 5,856' to 5,871'; Run #4, 5,838' to 5,852'; Run #5, 5,694' to 5,707'; Run #6, 5,664-1/2' to 5,684-1/2'.
- On 06-02-98 Halliburton was moved in and rigged up. The well casing was "pickled with 350 gals of 20% FE acid displaced w/ 50,000 SCF N₂. The acid was allowed to flow into a flowback tank. Treated well with 8,000 gals 60 Quality foamed 20% FE acid @ 8BPM and 8,000 gals 60 Quality foamed 15% FE acid. Flushed with 3066 gals 60 Q foamed water.
- Additives : FE1-A, FE-5A, BA-2, HAI-81, SCA-130, PENN-88, and HC-2.
- AVERAGE RATE=3-4BPM AVERAGE TREATING PRESSURE=2,500 PSIG
- Recovered 86 bbls of 166 bbls total fluids on flowback, 6-02-98.
- Fluids removed from location and transported for disposal @ LAD (Liquid Asset Disposal, Inc.) Wheeling, WV on 6-10-98.
- Well Work Completed 06-03-98.



STATE OF WEST VIRGINIA
DEPARTMENT OF MINES
OIL AND GAS DIVISION 18

Quadrangle Kingwood

Permit No. Pres. - 98

WELL RECORD

Oil or Gas Well Gas

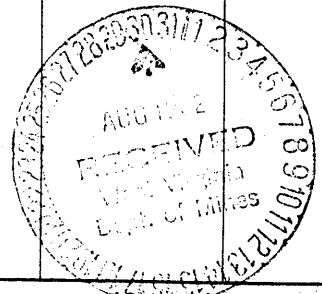
Company Atlantic Seaboard Corporation
 Address P.O. Box 1273, Charleston 25, W. Va.
 Farm Bessie V. Cramer et. con. Acres 74
 Location (waters) Kinsinger Run of Salt Lick Creek
 Well No. A-9170 Elev. 2390.11
 District Union County Preston
 The surface of tract is owned in fee by _____
 Address _____
 Mineral rights are owned by _____
 Address _____
 Drilling commenced April 23, 1962
 Drilling completed May 20, 1962
 Date Shot -- From -- To --
 With ---
 Open Flow /10ths Water in _____ Inch
/10ths Merc. in _____ Inch
 Volume _____ Cu. Ft.
 Rock Pressure _____ lbs. _____ hrs.
 Oil _____ bbls., 1st 24 hrs.
 WELL ACIDIZED See reverse
 WELL FRACTURED See reverse

Casing and Tubing	Used in Drilling	Left in Well	Packers
Size			Kind of Packer <u>XX</u>
16			
13			
<u>10 11-3/4"</u>	<u>63'</u>	<u>63'</u>	Size of <u>XX</u>
<u>8 8-5/8"</u>	<u>764'</u>	<u>764'</u>	Depth set _____
6 5/8"			
5 3/16"			
<u>4 1-1/2"</u>	<u>6064'</u>	<u>6064'</u>	Perf. top <u>XX</u>
2			Perf. bottom <u>XX</u>
Liners Used			Perf. top <u>XX</u>
			Perf. bottom <u>XX</u>

CASING CEMENTED _____ SIZE _____ No. Ft. _____ Date _____
See reverse
 COAL WAS ENCOUNTERED AT none FEET _____ INCHES
 _____ FEET _____ INCHES FEET _____ INCHES
 _____ FEET _____ INCHES FEET _____ INCHES

RESULT AFTER TREATMENT See reverse 1,186 Mcf
 ROCK PRESSURE AFTER TREATMENT 1344 psig
 Fresh Water _____ Feet Salt Water _____ Feet

Formation	Color	Hard or Soft	Top	Bottom	Oil, Gas or Water	Depth	Remarks
Siltstone & Shale			0	4967			
Tully Shale			4967	5005			
Onondaca Lime			5005	5644	<u>5644</u>	<u>5627</u>	<u>5956</u>
Chert			5644	5663	<u>2390</u>	<u>2390</u>	
Shale			5663	5797	<u>3254</u>	<u>3437</u>	<u>3566</u>
Oriskany			5797	5827			
Helderberg			5827	5956			
Total Depth			5956	6030			



Formation	Color	Hard or Soft	Top 18	Bottom	Oil, Gas or Water	Depth Found	Remarks
NOTE:							
11-3/4" 47#/Ft. Mill reject, reconditioned casing cemented to surface with 25 sacks neat cement. - April 24, 1962							
8-5/8" 24#/Ft., J-55 Casing cemented to surface with 189 sacks neat cement, - May 12, 1962							
4-1/2" 12.6#/Ft., J-55 (5949') & N-80 (115') tubing cemented with 243 sacks 4% gel cement. May 20, 1962.							
4-1/2" Tubing perforated @5980' with McCullough 3-Way Frac notch & @5960' with McCullough 2-way Frac notch. May 27, 1962.							
4-1/2" Tubing perforated @ 5695' - 5705' and 5877' - 5885' with 1-shot per/ft using McCullough Std. Casing Glass Jet.							
Set Baker Cast Iron Bridge Plug in 4-1/2" Tubing @5920'.							
<u>Riverfrac:</u> Depth 5970' to 5980' May 31, 1962							
Spearhead 200 Gal Mud Acid							
Breakdown 5000 Gal							
Frac 34112 Gal							
Sand 20 - 40 20,000#							
Av. Injection rate 19.8 bbl/min.							
Max. Press. 3900 psi							
Av. Press. 3700 psi							
S.I. Press. 2900 psi							
Prod. Before treatment - show							
Prod. After treatment - show							
<u>Acid:</u> Depth 5695' - 5705' - 5877' - 5885', July 5, 1962							
Mud Acid 250 Gal							
7 1/2% Acid 6000 Gal							
Av. Injection rate 6 bbl/min							
Max. Press. 3000 psi							
Av. Press. 3000 psi							
S.I. Press. 1000 psi							
15 min press. 400 psi							
Prod. before treatment - show							
Prod. after treatment - <u>1,186 MCF</u>							

Date August 23, 1962
APPROVED Atlantic Seaboard Corp. Owner
By W. C. Hufford, Jr. (Title) Sept